

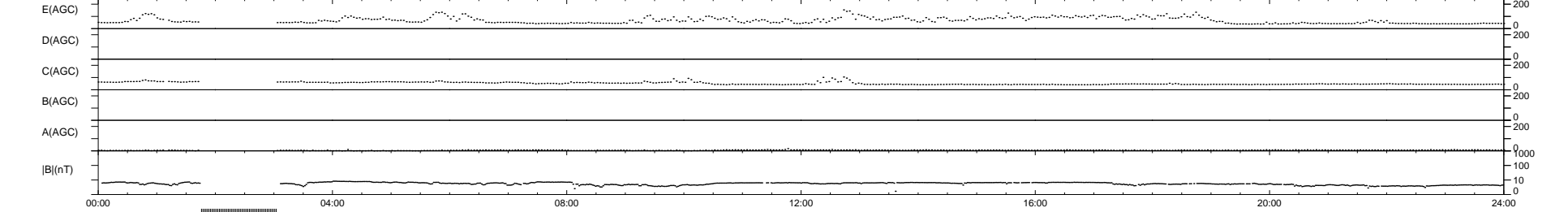
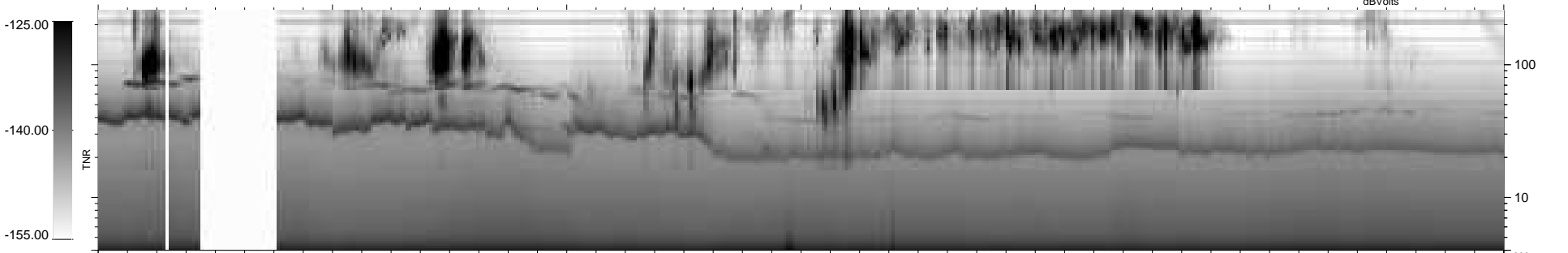
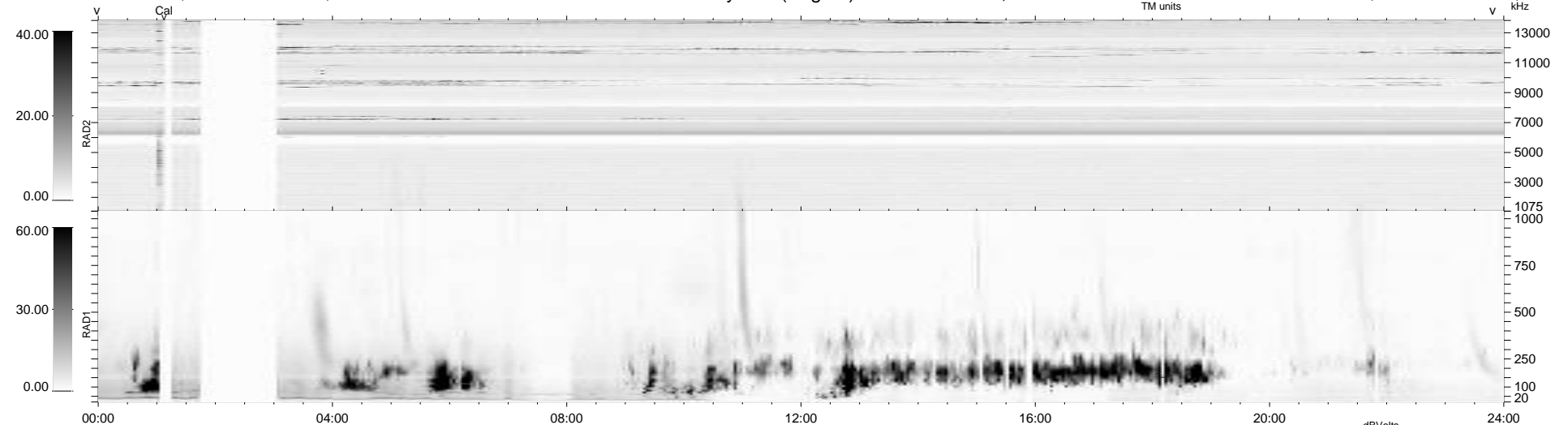
20 bad + 868 good MF/939MF projected (92%) - 51 missing MFs
 Avg interval = 180 secs
 Re = 205.06 (202.78, -26.21, -15.64 GSE)

windlib 2.0b

LZ version = v01

WIND/WAVES Summary Plot (Page 1) for 15-JUL-2013, DOY = 196

DAILY 2013-07-17 13:46:04
 Re = 204.39 (202.51, -22.66, -15.96 GSE)



```

RAD2
Antenna Ey .....
Mode LIN(1) .....
SUM/SEP SEP .....
Toggle OFF .....

RAD1
Antenna Ex .....
Mode LIS(2,4) .....
SUM/SEP SUM .....
Toggle OFF .....

TNR
Antenna ExEy .....
Mode A-32 .....
Sweep ACE .....
  
```