

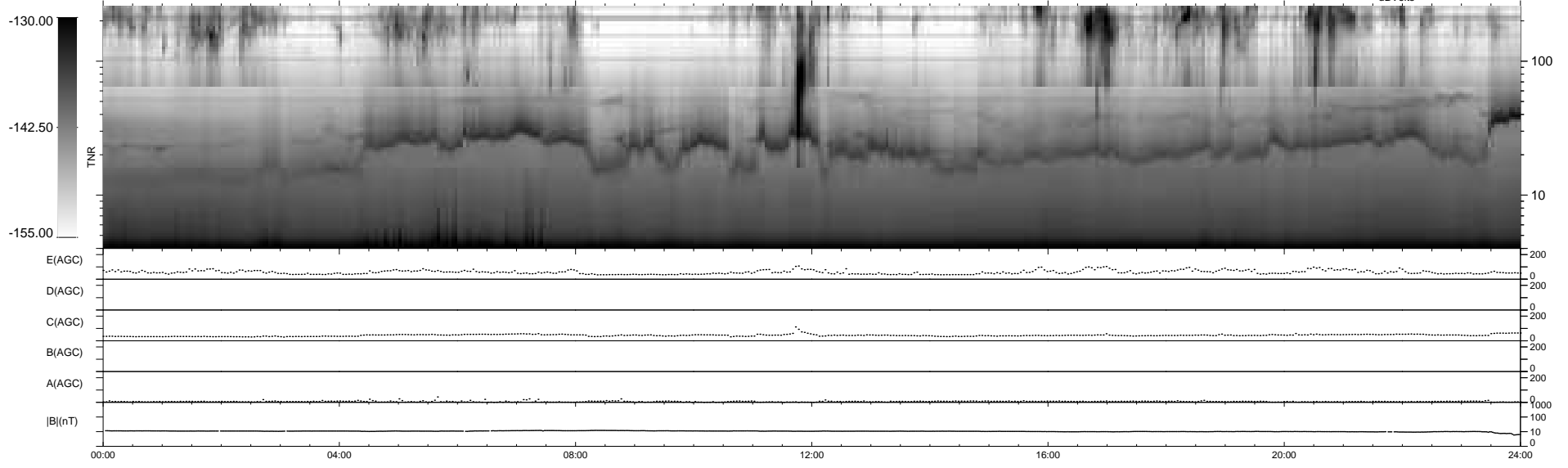
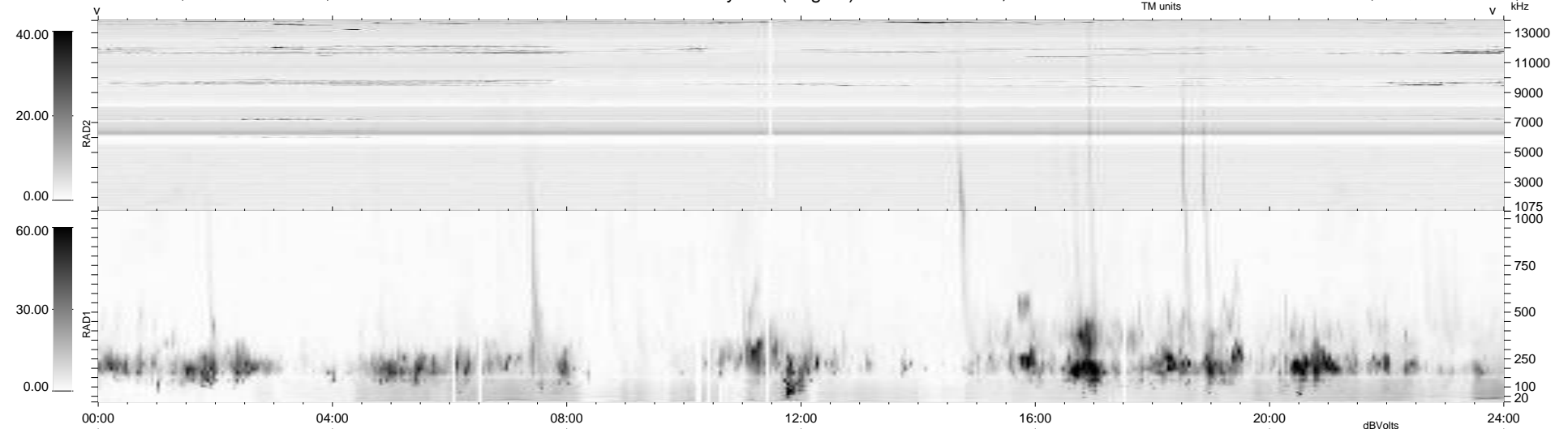
15 bad + 925 good MF/940MF projected (98%) - 0 missing MFs
 Avg interval = 180 secs
 Re = 205.80 (203.06, -29.77, -15.28 GSE)

windlib 2.0b

LZ version = v01

WIND/WAVES Summary Plot (Page 1) for 14-JUL-2013, DOY = 195

DAILY 2013-07-17 15:46:04
 Re = 205.06 (202.78, -26.23, -15.63 GSE)



RAD2
 Antenna Ey
 Mode LIN(1)
 SUM/SEP SEP
 Toggle OFF
 RAD1
 Antenna Ex
 Mode LIS(2,4)
 SUM/SEP SUM
 Toggle OFF
 TNR
 Antenna ExEy
 Mode A-32
 Sweep ACE