

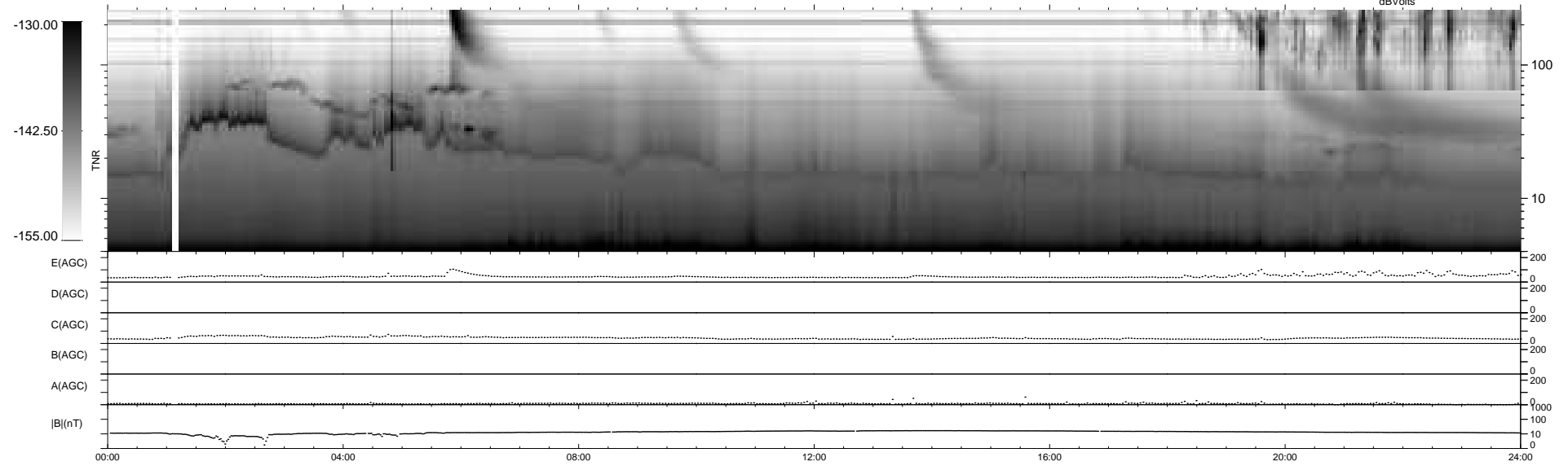
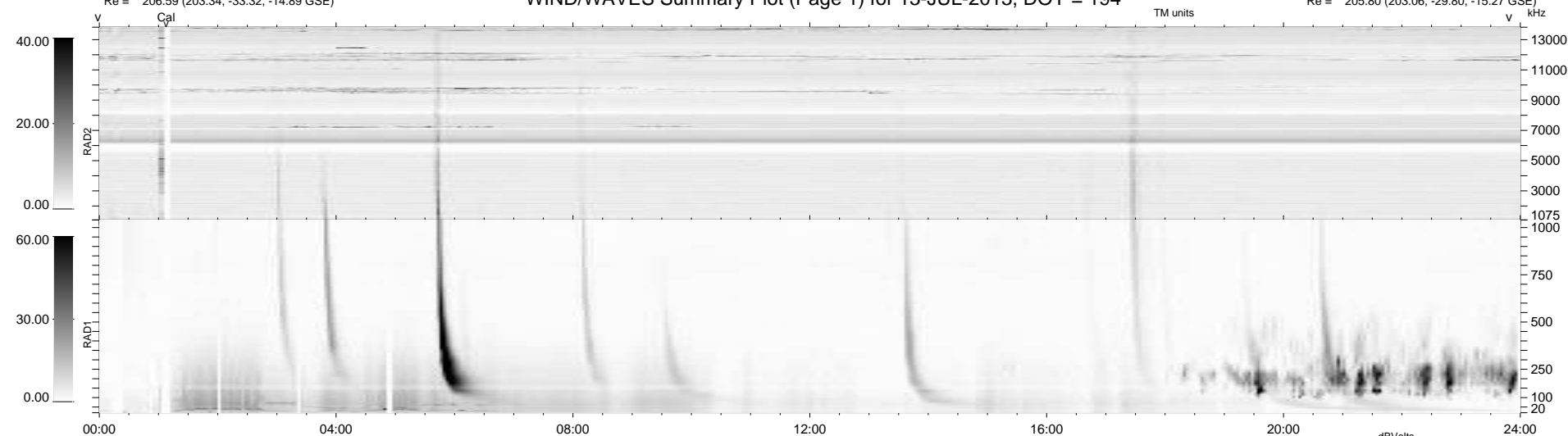
20 bad + 919 good MF/939MF projected (97%) - 0 missing MFs  
Avg interval = 180 secs  
Re = 206.59 (203.34, -33.32, -14.89 GSE)

windlib 2.0b

LZ version = v01

### WIND/WAVES Summary Plot (Page 1) for 13-JUL-2013, DOY = 194

DAILY 2013-07-16 10:46:03  
Re = 205.80 (203.06, -29.80, -15.27 GSE)



RAD2  
Antenna Ey  
Mode LIN(1)  
SUM/SEP SEP  
Toggle OFF

RAD1  
Antenna Ex  
Mode LIS(2,4)  
SUM/SEP SUM  
Toggle OFF

TNR  
Antenna ExEy  
Mode A-32  
Sweep ACE