

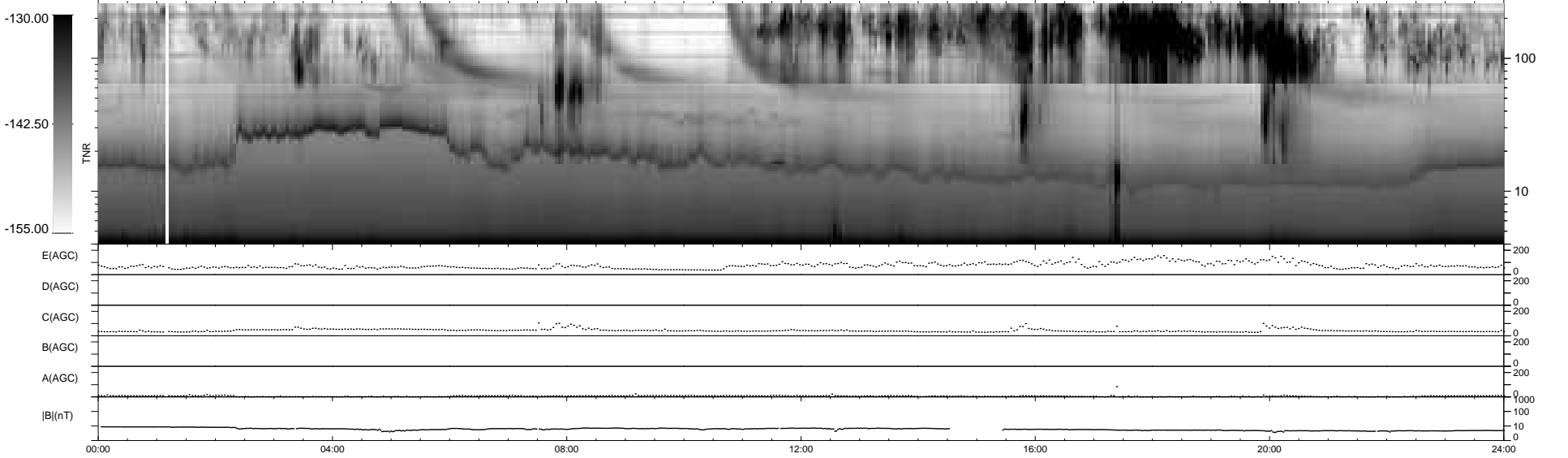
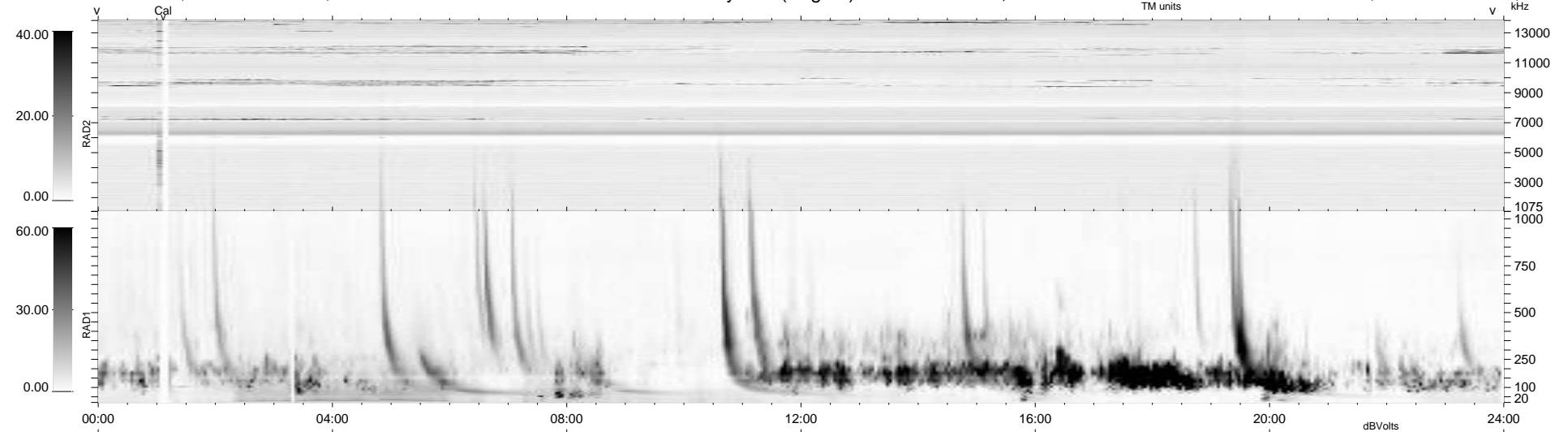
5 bad + 934 good MF/939MF projected (99%) - 0 missing MFs  
 Avg interval = 180 secs  
 Re = 208.33 (203.91, -40.33, -14.04 GSE)

windlib 2.0b

LZ version = v01

### WIND/WAVES Summary Plot (Page 1) for 11-JUL-2013, DOY = 192

DAILY 2013-07-12 13:46:04  
 Re = 207.45 (203.63, -36.87, -14.48 GSE)



RAD2  
 Antenna Ey .....  
 Mode LIN(1) .....  
 SUM/SEP SEP .....  
 Toggle OFF .....  
 RAD1  
 Antenna Ex .....  
 Mode LIS(2,4) .....  
 SUM/SEP SUM .....  
 Toggle OFF .....  
 TNR  
 Antenna ExEy .....  
 Mode A-32 .....  
 Sweep ACE .....