

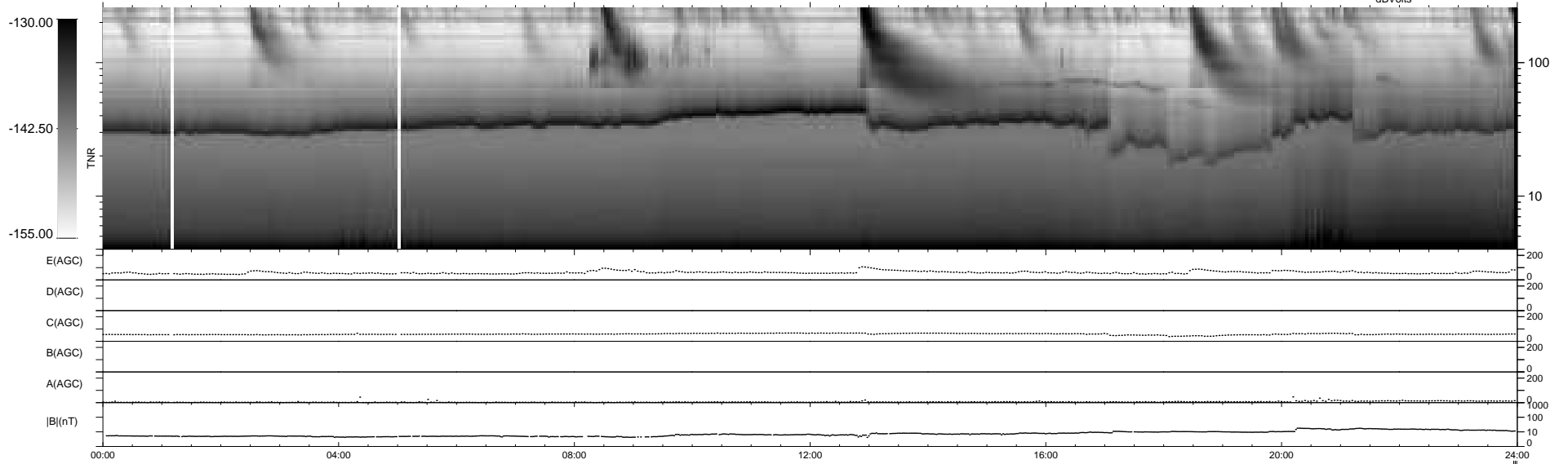
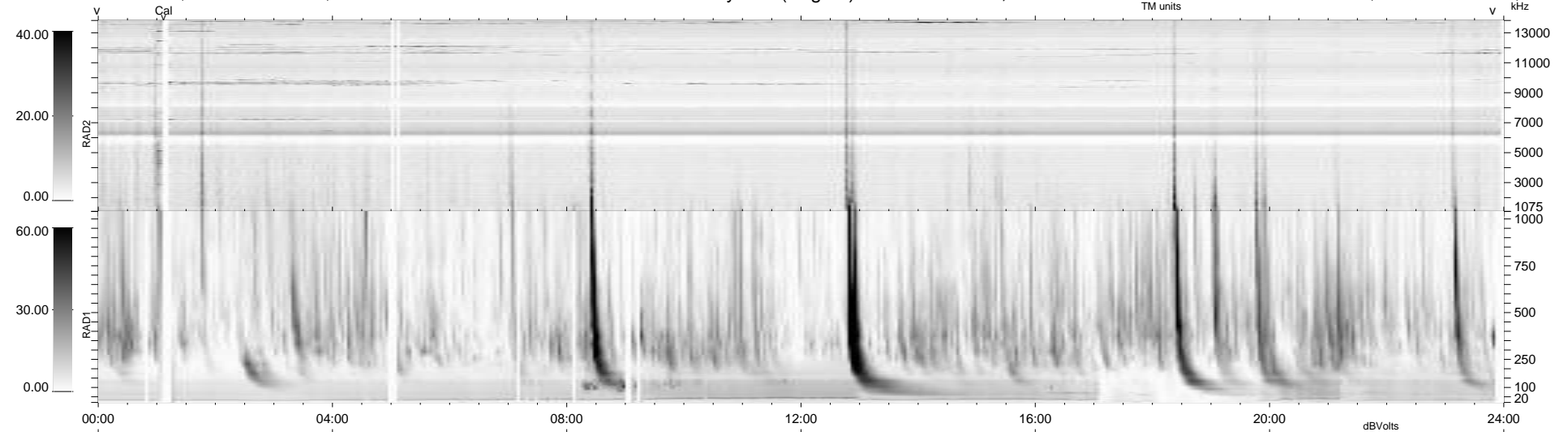
28 bad + 908 good MF/939MF projected (96%) - 3 missing MFs
 Avg interval = 180 secs
 Re = - 210.23 (204.45, -47.16, -13.09 GSE)

windlib 2.0b

LZ version = v01

WIND/WAVES Summary Plot (Page 1) for 09-JUL-2013, DOY = 190

DAILY 2013-07-11 01:46:03
 Re = 209.27 (204.19, -43.80, -13.57 GSE)



```

RAD2
Antenna Ey .....
Mode LIN(1) .....
SUM/SEP SEP .....
Toggle OFF .....

RAD1
Antenna Ex .....
Mode LIS(2,4) .....
SUM/SEP SUM .....
Toggle OFF .....

TNR
Antenna ExEy .....
Mode A-32 .....
Sweep ACE .....
  
```