

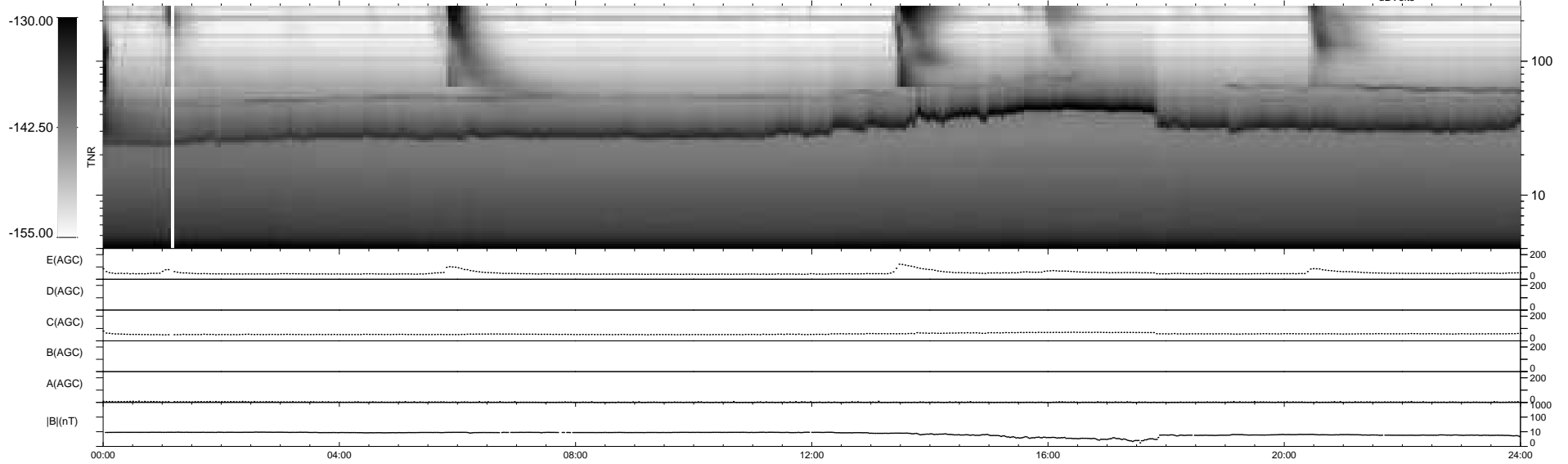
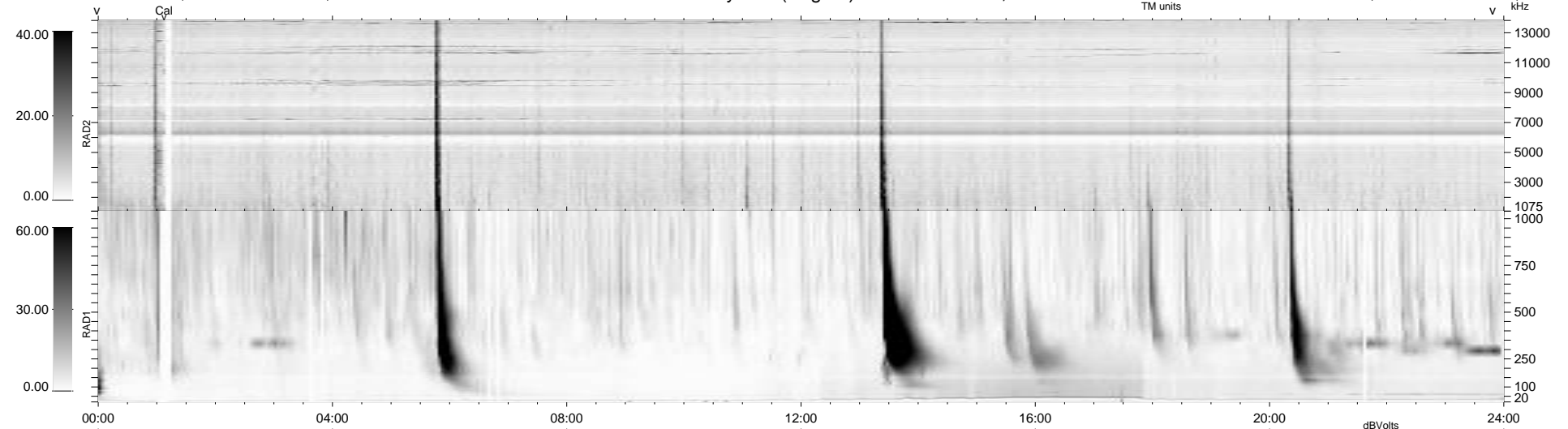
21 bad + 919 good MF/940MF projected (97%) - 0 missing MFs  
 Avg interval = 180 secs  
 Re = 212.24 (204.97, -53.73, -12.05 GSE)

windlib 2.0b

LZ version = v02

### WIND/WAVES Summary Plot (Page 1) for 07-JUL-2013, DOY = 188

DAILY 2013-07-09 10:46:04  
 Re = 211.23 (204.72, -50.51, -12.58 GSE)



```

RAD2
Antenna Ey .....
Mode LIN(1) .....
SUM/SEP SEP .....
Toggle OFF .....

RAD1
Antenna Ex .....
Mode LIS(2,4) .....
SUM/SEP SUM .....
Toggle OFF .....

TNR
Antenna ExEy .....
Mode A-32 .....
Sweep ACE .....
  
```