

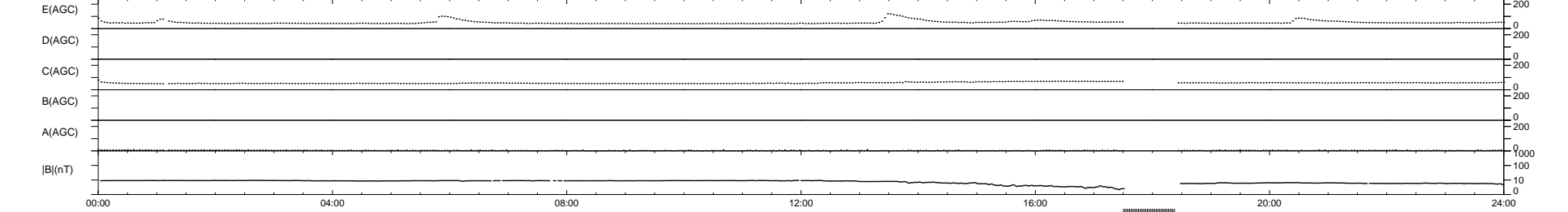
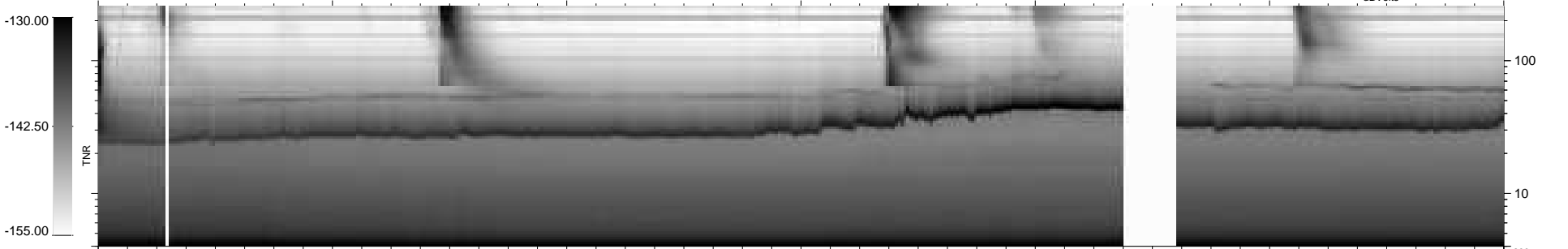
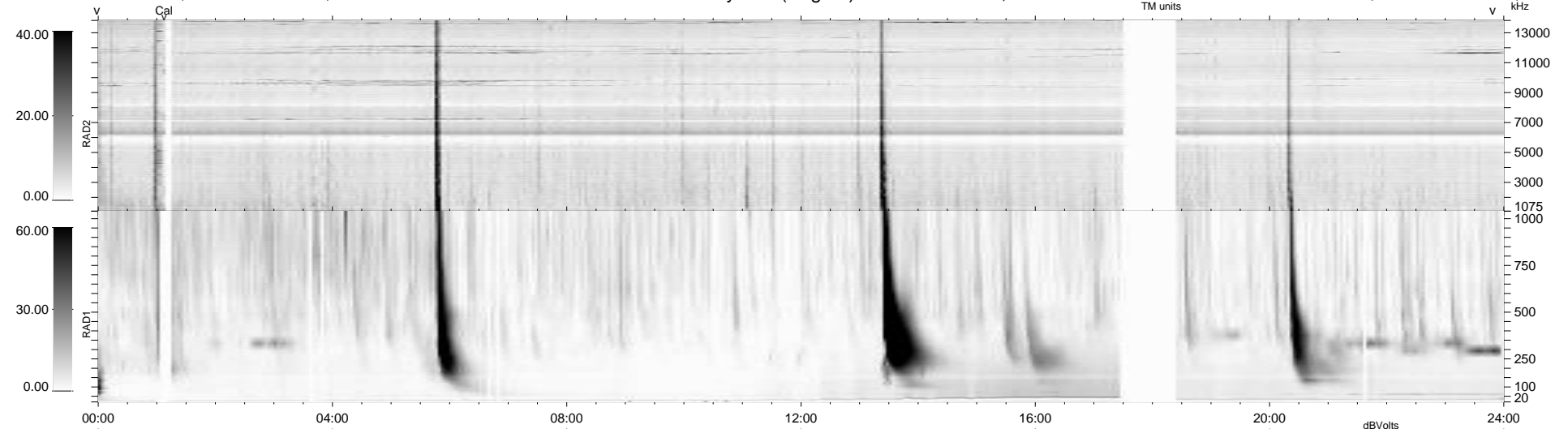
21 bad + 884 good MF/940MF projected (94%) - 35 missing MFs
 Avg interval = 180 secs
 Re = 212.24 (204.97, -53.73, -12.05 GSE)

windlib 2.0b

LZ version = v01

WIND/WAVES Summary Plot (Page 1) for 07-JUL-2013, DOY = 188

DAILY 2013-07-08 06:46:04
 Re = 211.23 (204.72, -50.51, -12.58 GSE)



```

RAD2
Antenna  Ey .....
Mode     LIN(1) .....
SUM/SEP  SEP .....
Toggle   OFF .....

RAD1
Antenna  Ex .....
Mode     LIS(2,4) .....
SUM/SEP  SUM .....
Toggle   OFF .....

TNR
Antenna  ExEy .....
Mode     A-32 .....
Sweep    ACE .....
  
```