

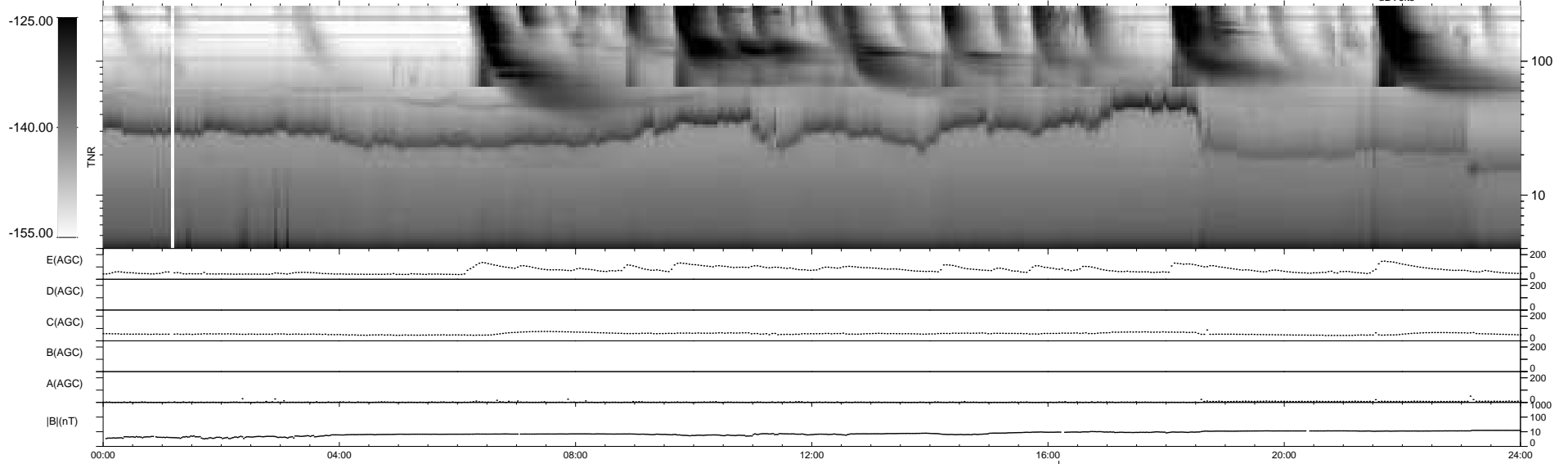
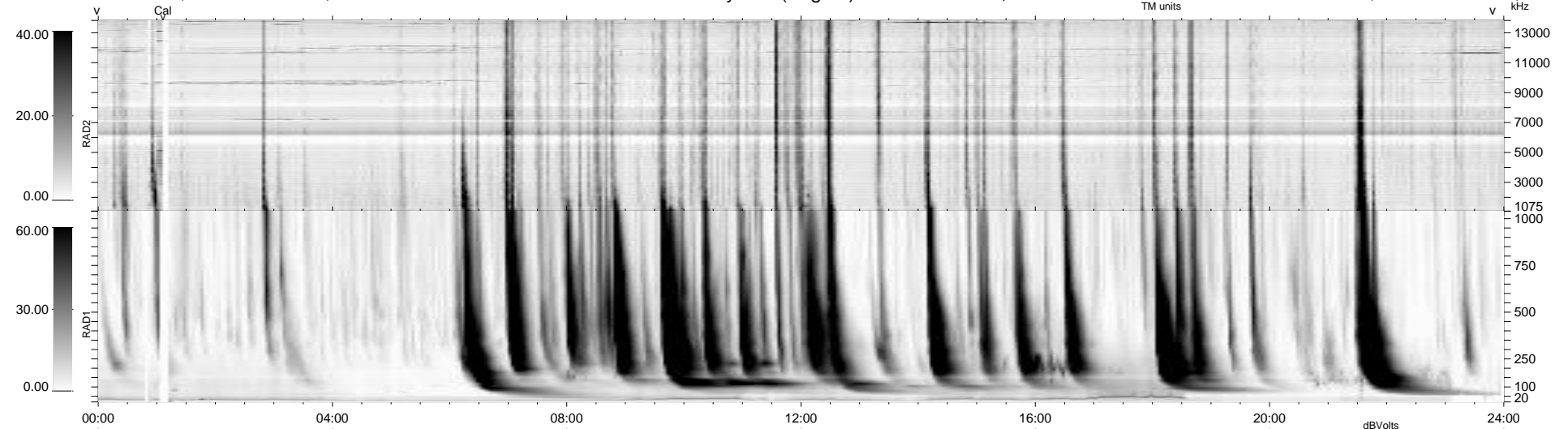
6 bad + 932 good MF/939MF projected (99%) - 1 missing MF
 Avg interval = 180 secs
 Re = 214.32 (205.46, -59.97, -10.92 GSE)

windlib 2.0b

LZ version = v01

WIND/WAVES Summary Plot (Page 1) for 05-JUL-2013, DOY = 186

DAILY 2013-07-06 18:46:04
 Re = 213.28 (205.22, -56.92, -11.49 GSE)



```

RAD2
Antenna Ey .....
Mode LIN(1) .....
SUM/SEP SEP .....
Toggle OFF .....

RAD1
Antenna Ex .....
Mode LIS(2,4) .....
SUM/SEP SUM .....
Toggle OFF .....

TNR
Antenna ExEy .....
Mode A-32 .....
Sweep ACE .....
  
```