

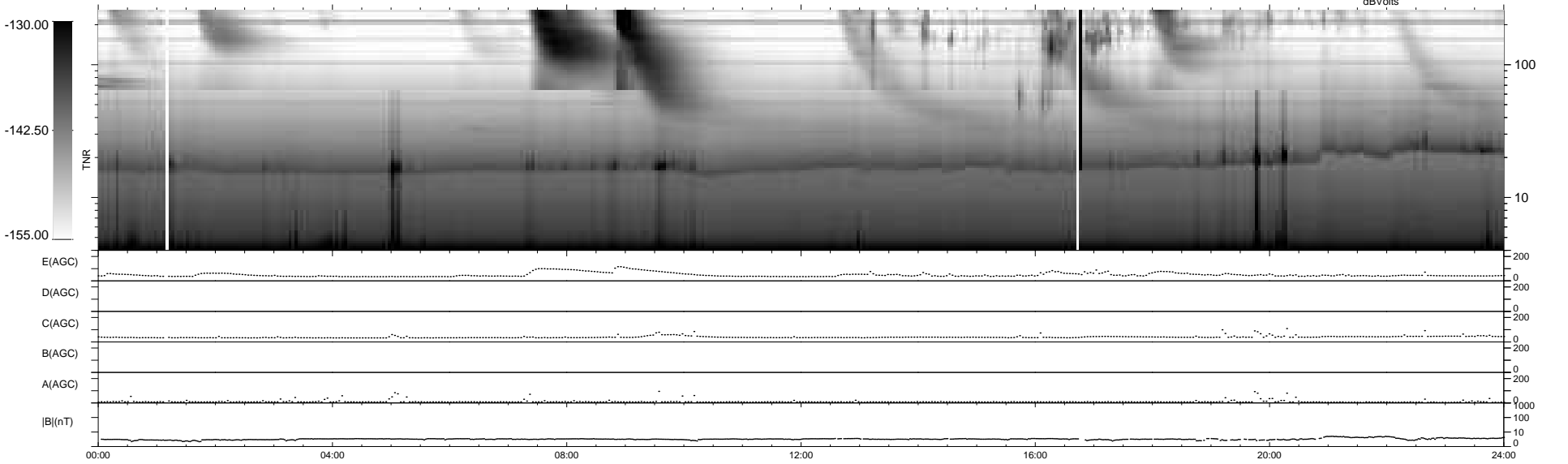
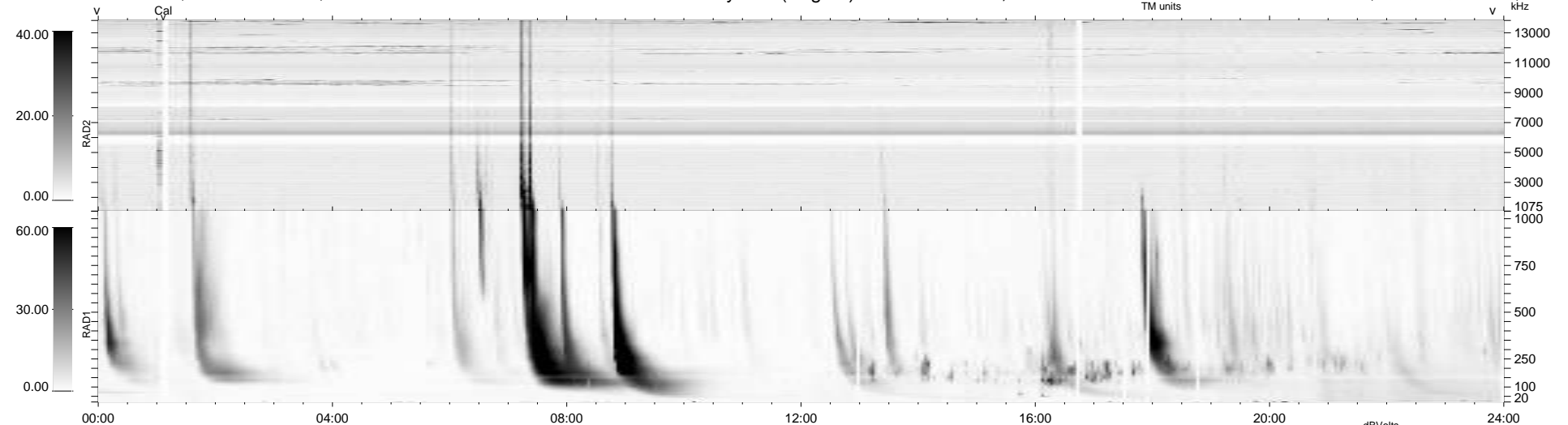
25 bad + 914 good MF/939MF projected (97%) - 0 missing MFs  
 Avg interval = 180 secs  
 Re = 216.44 (205.97, -65.81, -9.73 GSE)

windlib 2.0b

LZ version = v02

### WIND/WAVES Summary Plot (Page 1) for 03-JUL-2013, DOY = 184

DAILY 2013-07-08 10:46:03  
 Re = 215.38 (205.71, -62.96, -10.33 GSE)



RAD2  
 Antenna Ey  
 Mode LIN(1)  
 SUM/SEP SEP  
 Toggle OFF

RAD1  
 Antenna Ex  
 Mode LIS(2,4)  
 SUM/SEP SUM  
 Toggle OFF

TNR  
 Antenna ExEy  
 Mode A-32  
 Sweep ACE