

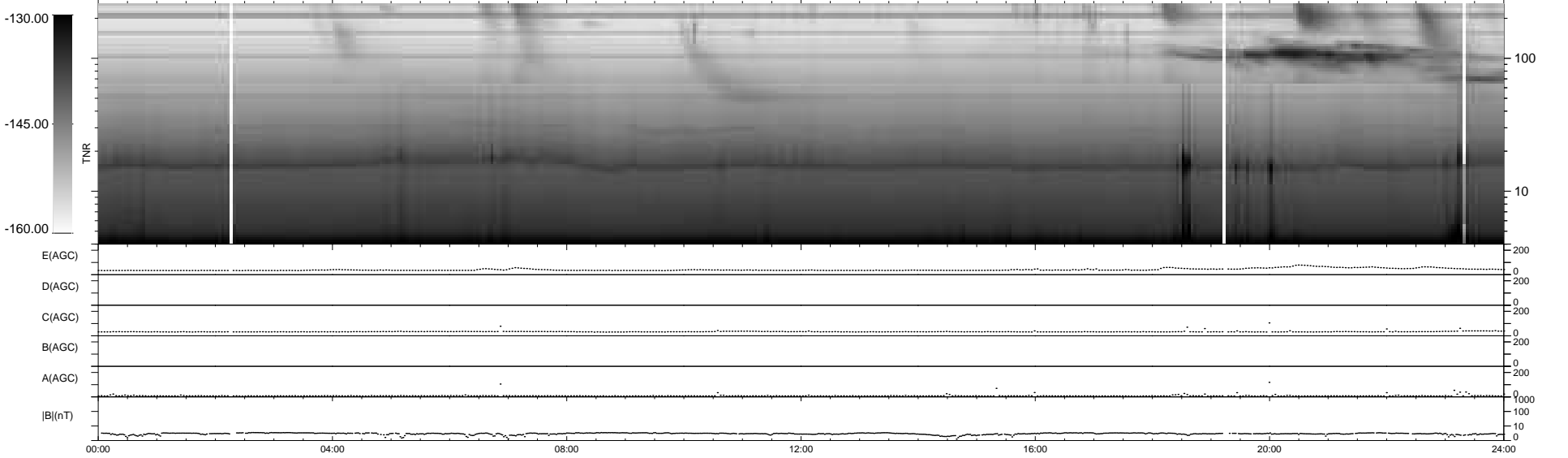
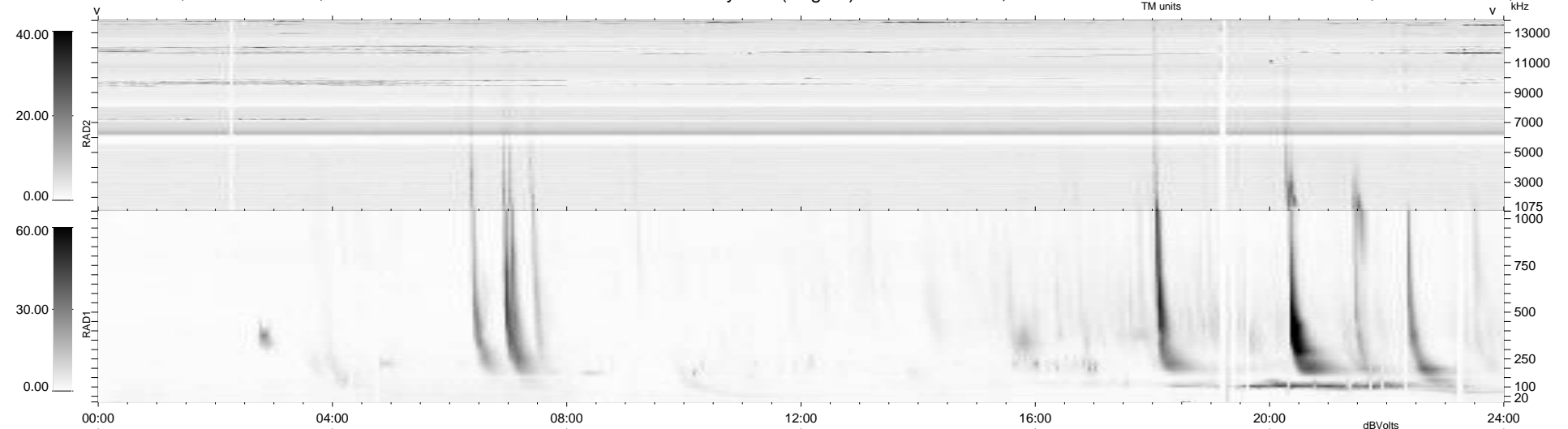
30 bad + 909 good MF/939MF projected (96%) - 0 missing MFs
 Avg interval = 180 secs
 Re = 217.52 (206.23, -68.56, -9.11 GSE)

windlib 2.0b

LZ version = v01

WIND/WAVES Summary Plot (Page 1) for 02-JUL-2013, DOY = 183

DAILY 2013-07-03 06:46:04
 Re = 216.45 (205.97, -65.83, -9.72 GSE)



RAD2 Antenna Ey
 Mode LIN(1)
 SUM/SEP SEP
 Toggle OFF
 RAD1 Antenna Ex
 Mode LIS(2,4)
 SUM/SEP SUM
 Toggle OFF
 TNR Antenna ExEy
 Mode A-32
 Sweep ACE