

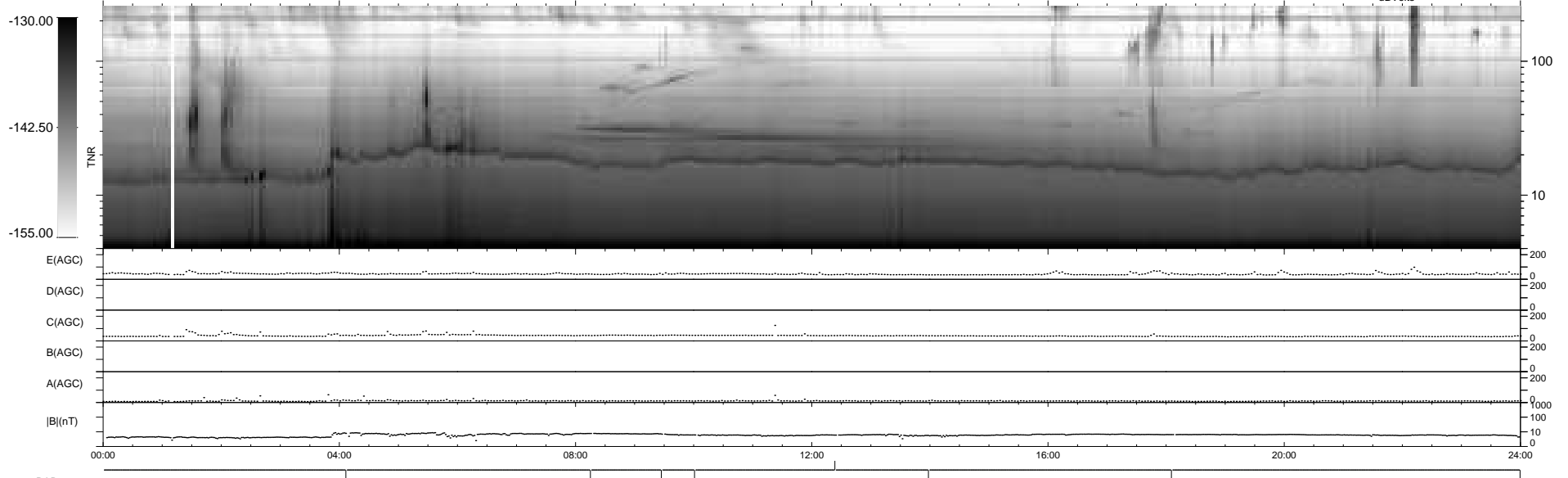
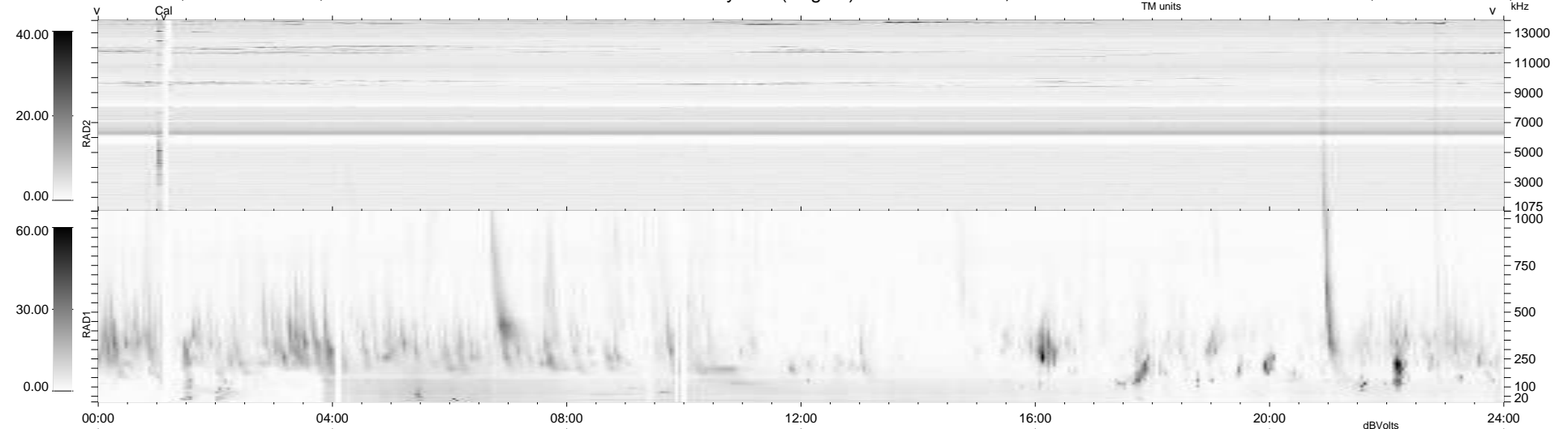
7 bad + 931 good MF/939MF projected (99%) - 1 missing MF
 Avg interval = 180 secs
 Re = 227.80 (210.25, -87.60, -3.18 GSE)

windlib 2.0b

LZ version = v01

WIND/WAVES Summary Plot (Page 1) for 23-JUN-2013, DOY = 174

DAILY 2013-06-24 17:46:05
 Re = 226.57 (209.58, -86.00, -3.85 GSE)



```

RAD2
Antenna Ey .....
Mode LIN(1) .....
SUM/SEP SEP .....
Toggle OFF .....

RAD1
Antenna Ex .....
Mode LIS(2,4) .....
SUM/SEP SUM .....
Toggle OFF .....

TNR
Antenna ExEy .....
Mode A-32 .....
Sweep ACE .....
  
```