

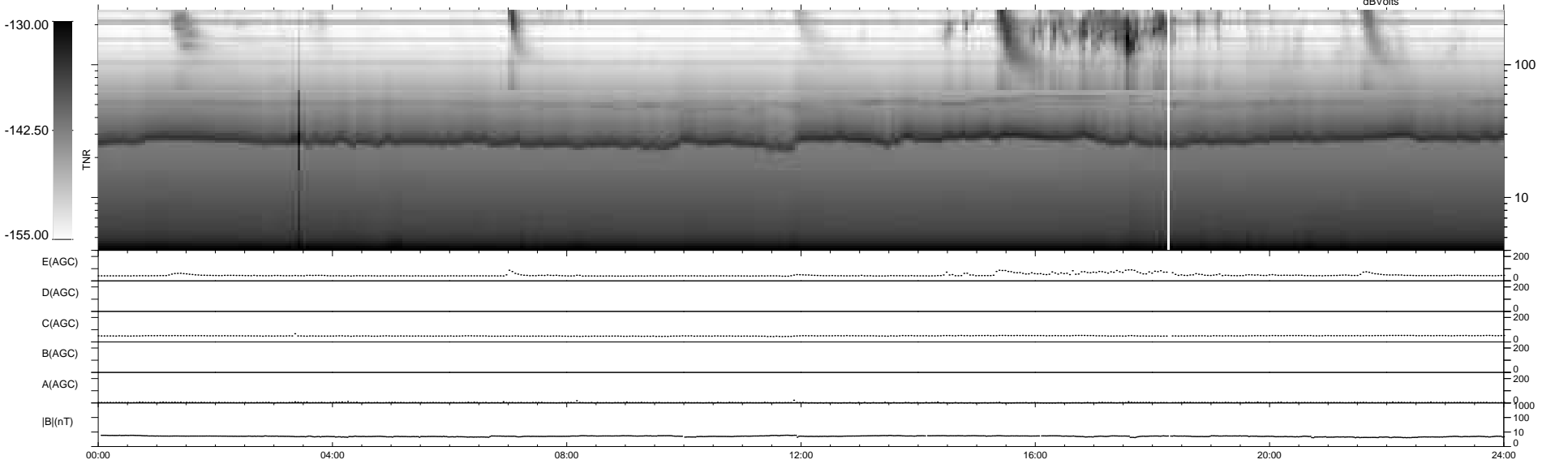
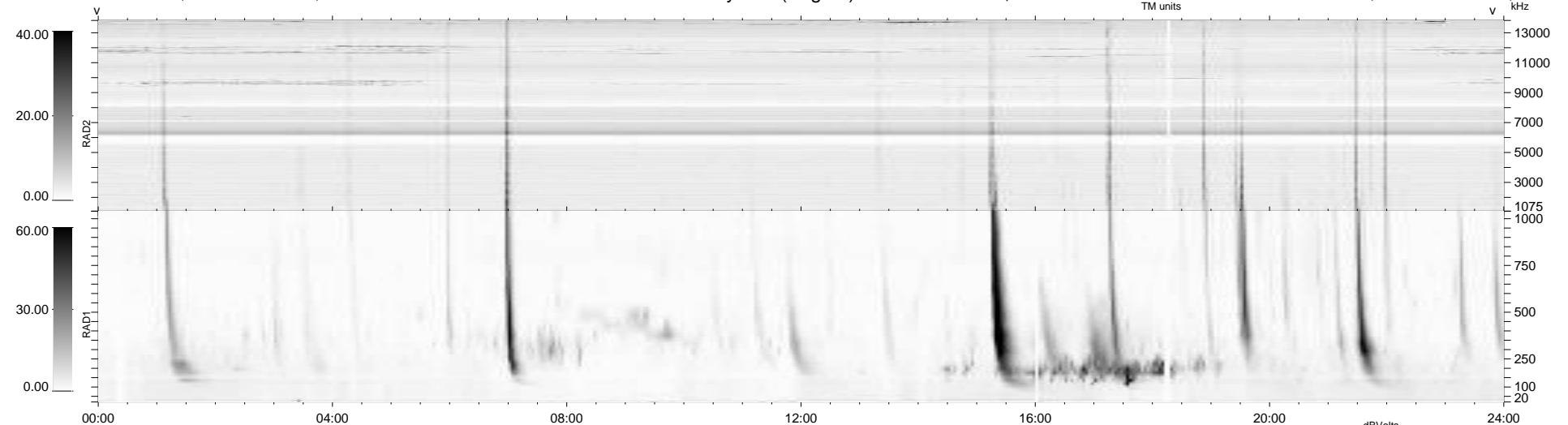
18 bad + 921 good MF/939MF projected (98%) - 0 missing MFs
 Avg interval = 180 secs
 Re = 234.35 (214.57, -94.24, 0.21 GSE)

windlib 2.0b

LZ version = v02

WIND/WAVES Summary Plot (Page 1) for 18-JUN-2013, DOY = 169

DAILY 2013-06-20 14:46:03
 Re = 233.01 (213.61, -93.10, -0.46 GSE)



```

RAD2
Antenna Ey .....
Mode LIN(1) .....
SUM/SEP SEP .....
Toggle OFF .....

RAD1
Antenna Ex .....
Mode LIS(2,4) .....
SUM/SEP SUM .....
Toggle OFF .....

TNR
Antenna ExEy .....
Mode A-32 .....
Sweep ACE .....
  
```