

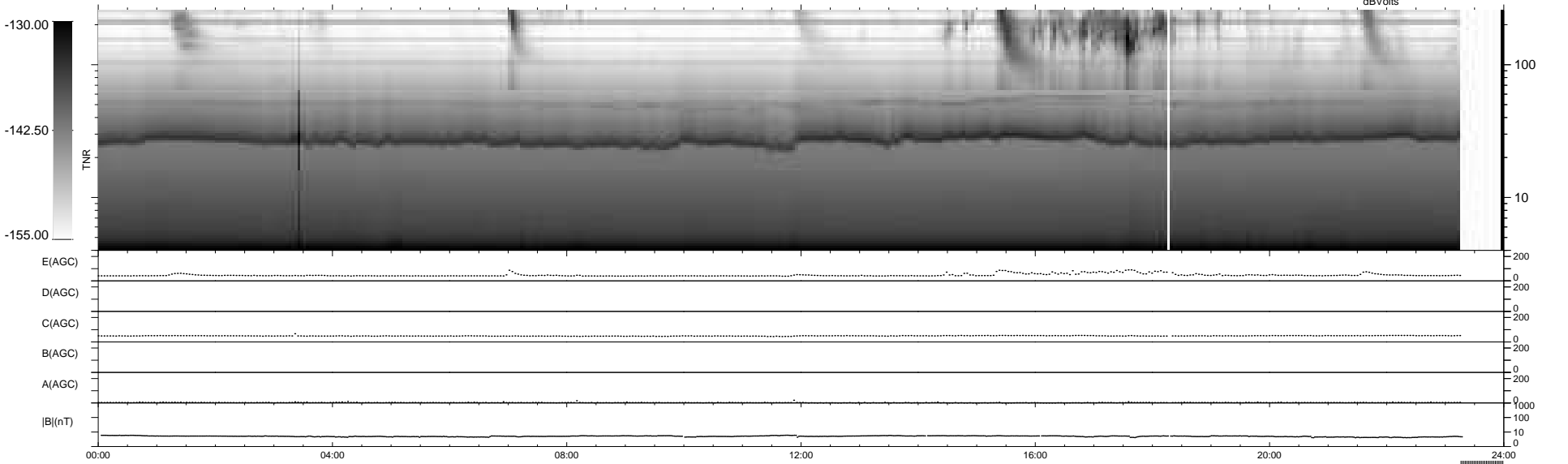
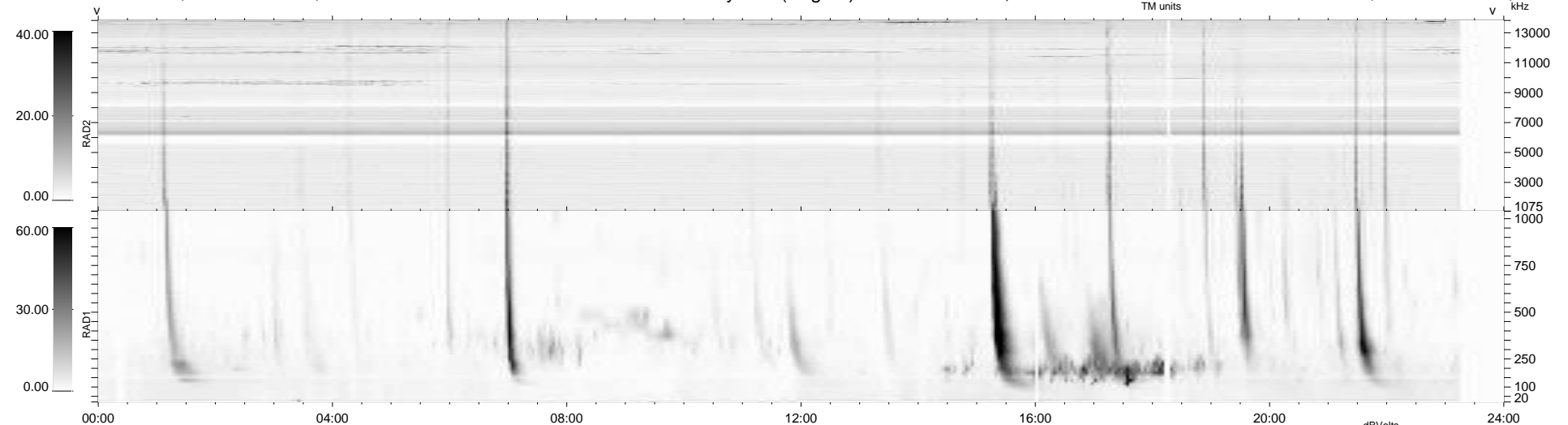
19 bad + 891 good MF/939MF projected (94%) - 29 missing MFs  
 Avg interval = 180 secs  
 Re = 234.35 (214.57, -94.24, 0.21 GSE)

windlib 2.0b

LZ version = v01

### WIND/WAVES Summary Plot (Page 1) for 18-JUN-2013, DOY = 169

DAILY 2013-06-20 00:46:03  
 Re = 233.01 (213.61, -93.10, -0.46 GSE)



```

RAD2
Antenna Ey .....
Mode LIN(1) .....
SUM/SEP SEP .....
Toggle OFF .....

RAD1
Antenna Ex .....
Mode LIS(2,4) .....
SUM/SEP SUM .....
Toggle OFF .....

TNR
Antenna ExEy .....
Mode A-32 .....
Sweep ACE .....
  
```