

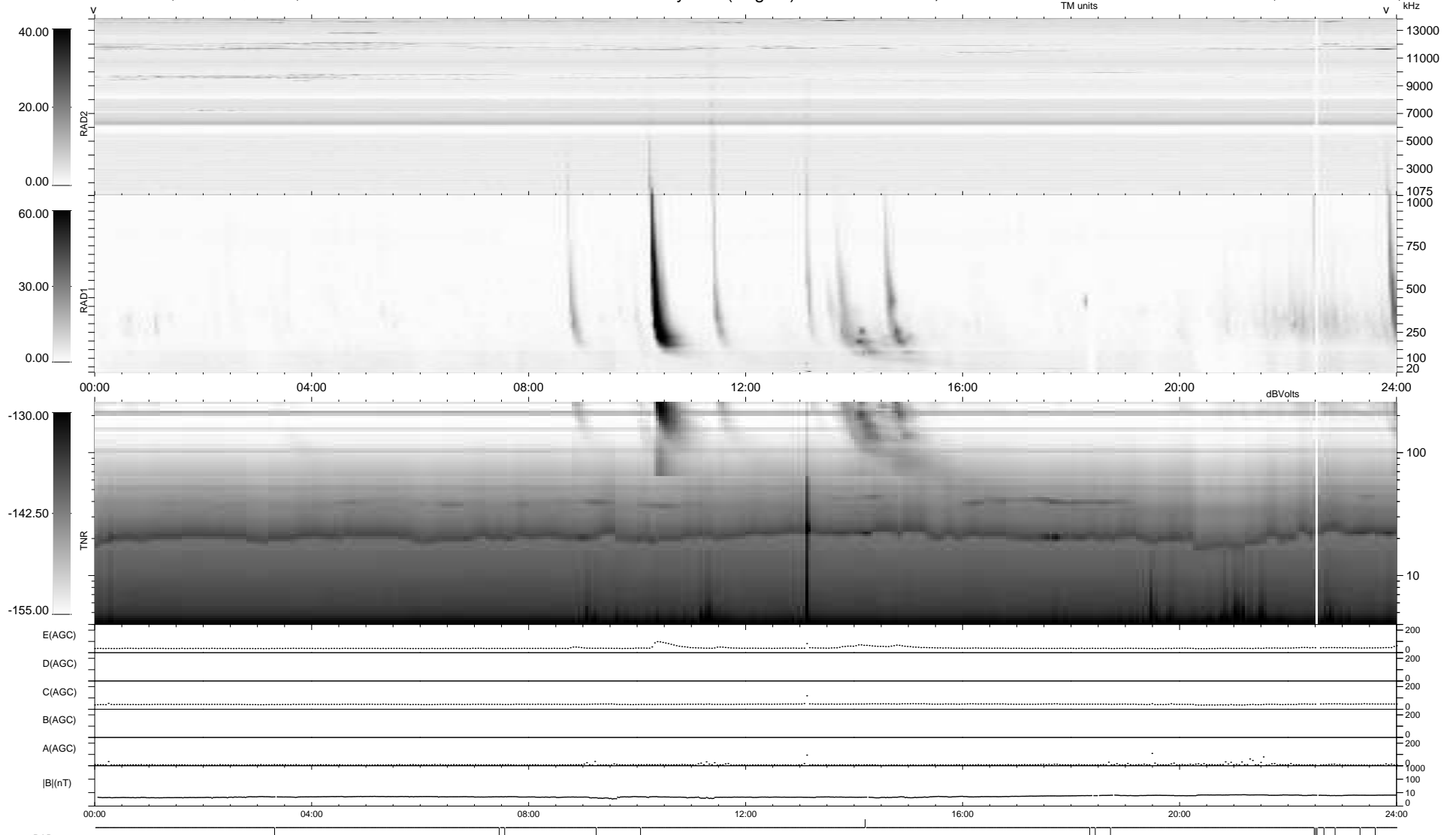
15 bad + 923 good MF/939MF projected (98%) - 1 missing MF
 Avg interval = 180 secs
 Re = 237.06 (216.61, -96.31, 1.58 GSE)

windlib 2.0b

LZ version = v01

WIND/WAVES Summary Plot (Page 1) for 16-JUN-2013, DOY = 167

DAILY 2013-06-17 06:46:03
 Re = 235.72 (215.58, -95.32, 0.90 GSE)



RAD2
 Antenna Ey
 Mode LIN(1)
 SUM/SEP SEP
 Toggle OFF
 RAD1
 Antenna Ex
 Mode LIS(2,4)
 SUM/SEP SUM
 Toggle OFF
 TNR
 Antenna ExEy
 Mode A-32
 Sweep ACE