

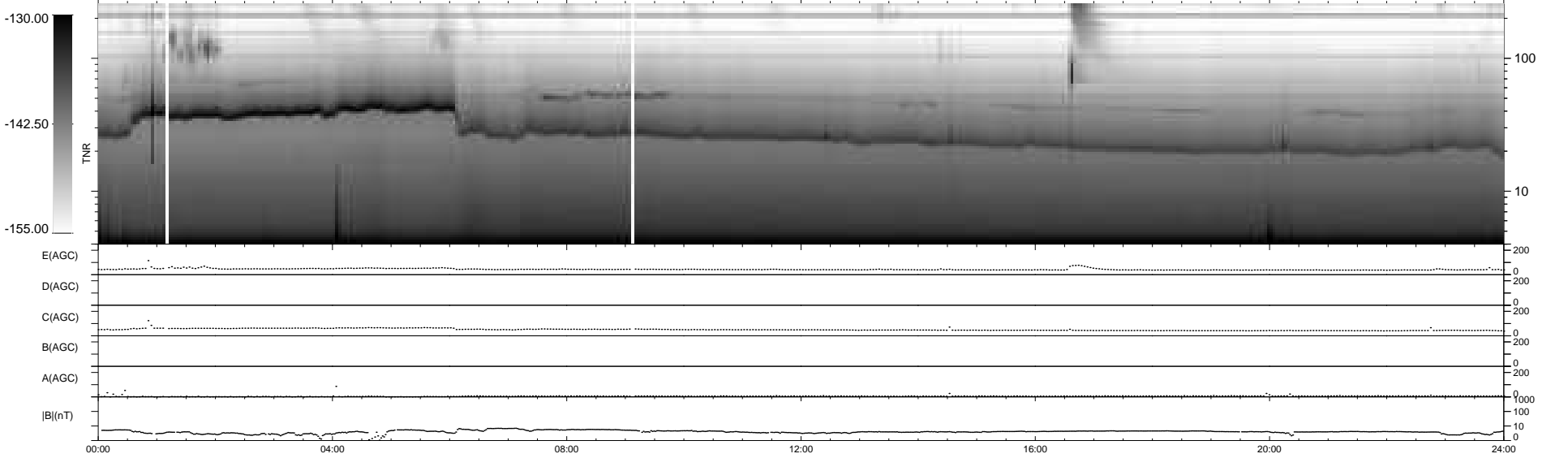
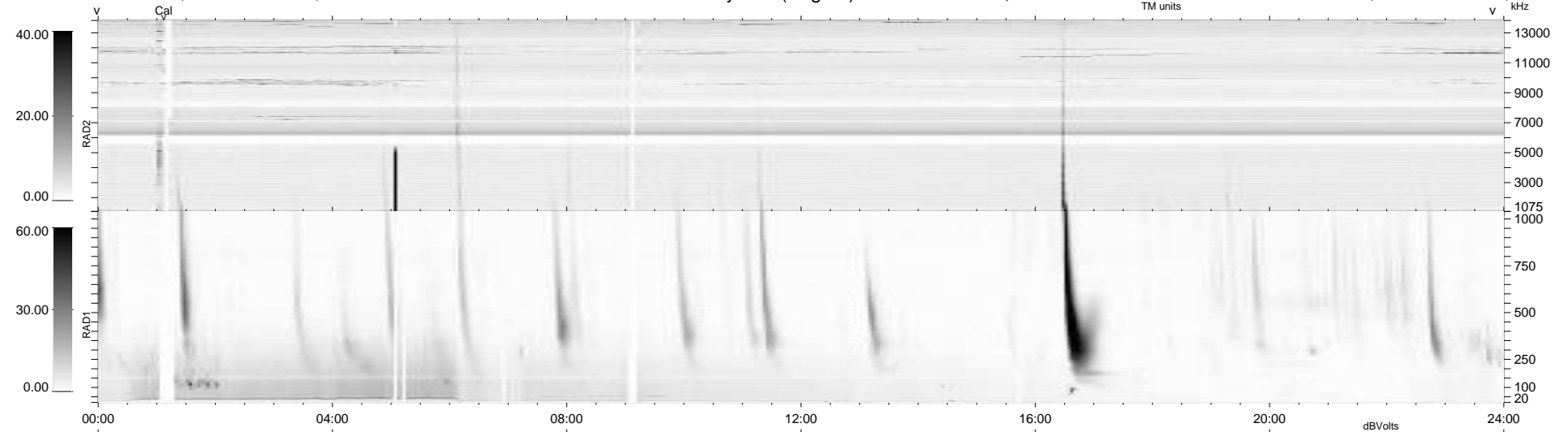
25 bad + 914 good MF/939MF projected (97%) - 0 missing MFs  
 Avg interval = 180 secs  
 Re = 238.40 (217.67, -97.21, 2.27 GSE)

windlib 2.0b

LZ version = v01

### WIND/WAVES Summary Plot (Page 1) for 15-JUN-2013, DOY = 166

DAILY 2013-06-16 12:46:03  
 Re = 237.07 (216.62, -96.31, 1.59 GSE)



```

RAD2
Antenna Ey .....
Mode LIN(1) .....
SUM/SEP SEP .....
Toggle OFF .....

RAD1
Antenna Ex .....
Mode LIS(2,4) .....
SUM/SEP SUM .....
Toggle OFF .....

TNR
Antenna ExEy .....
Mode A-32 .....
Sweep ACE .....
  
```