

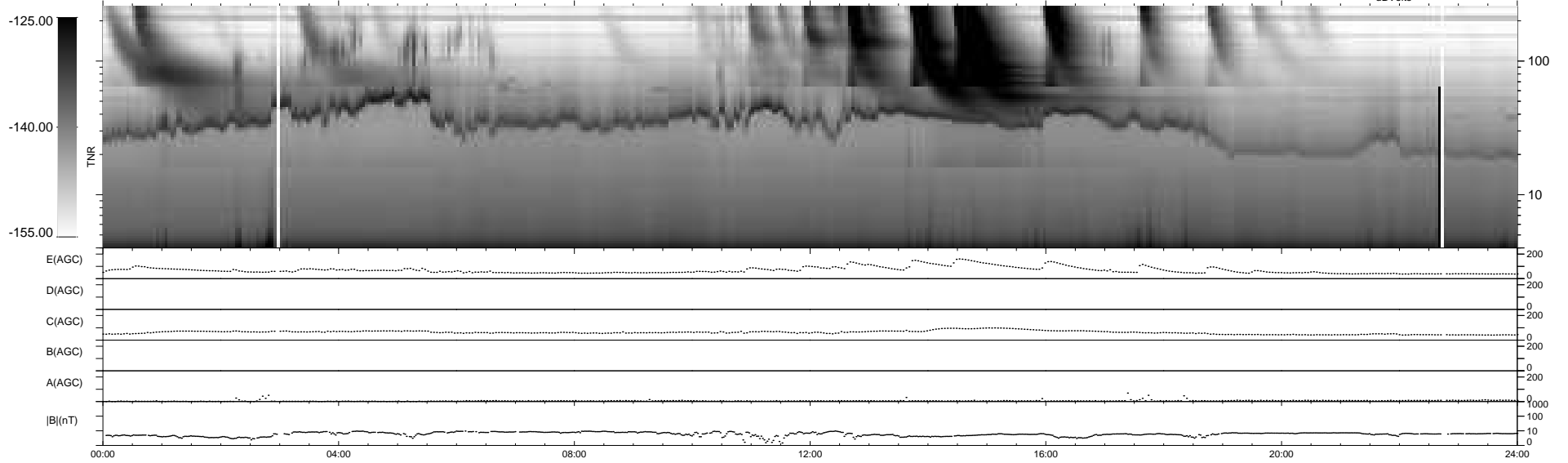
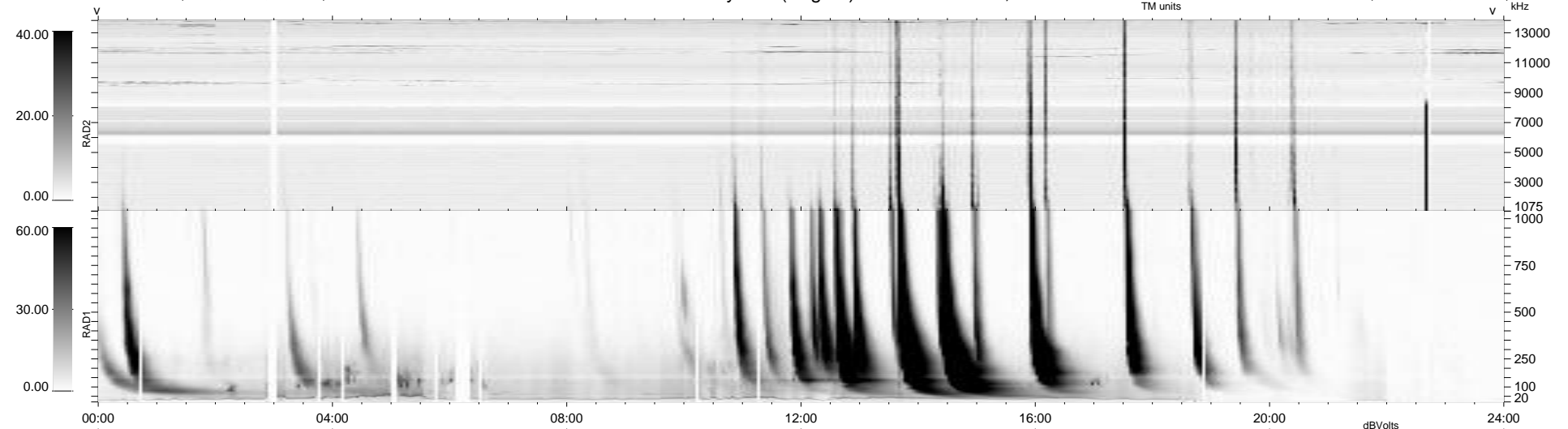
35 bad + 904 good MF/939MF projected (96%) - 0 missing MFs  
 Avg interval = 180 secs  
 Re = 244.69 (223.09, -100.35, 5.70 GSE)

windlib 2.0b

LZ version = v02

### WIND/WAVES Summary Plot (Page 1) for 10-JUN-2013, DOY = 161

DAILY 2013-06-13 12:46:03  
 Re = 243.52 (222.02, -99.93, 5.02 GSE)



RAD2  
 Antenna Ey  
 Mode LIN(1)  
 SUM/SEP SEP  
 Toggle OFF

RAD1  
 Antenna Ex  
 Mode LIS(2,4)  
 SUM/SEP SUM  
 Toggle OFF

TNR  
 Antenna ExEy  
 Mode A-32  
 Sweep ACE