

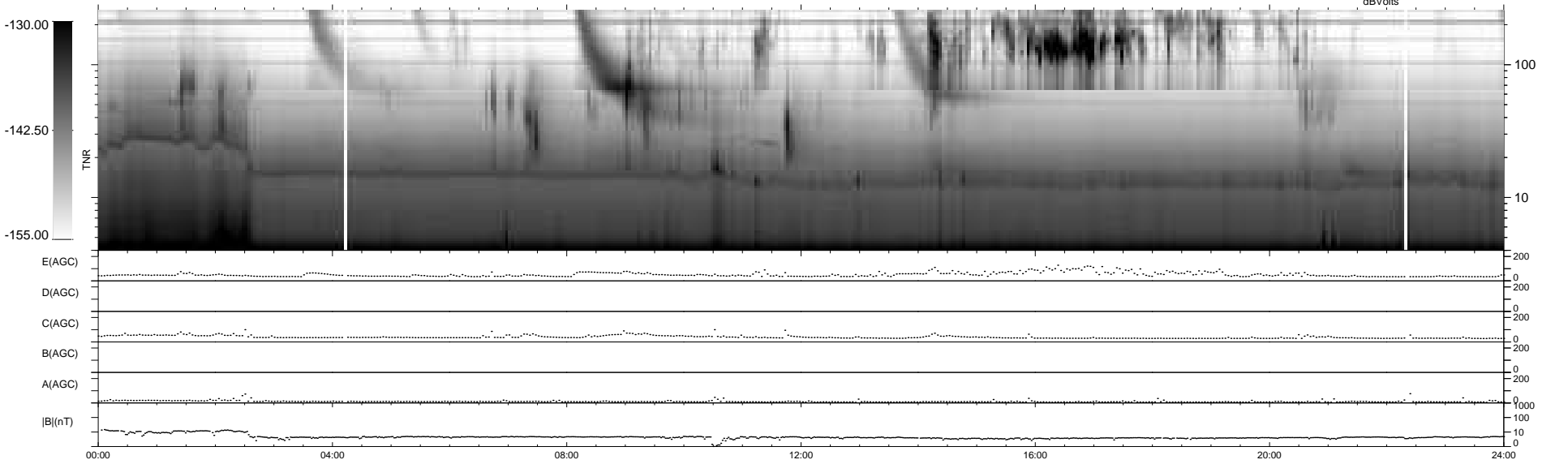
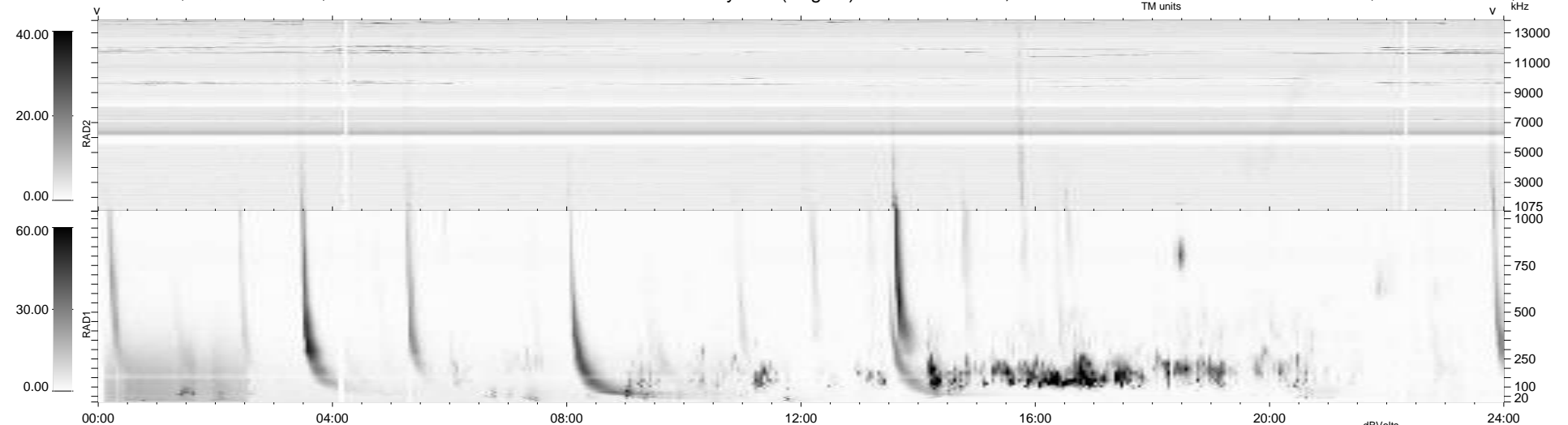
27 bad + 912 good MF/939MF projected (97%) - 0 missing MFs  
 Avg interval = 180 secs  
 Re = -252.04 (231.36, -99.39, 10.90 GSE)

windlib 2.0b

LZ version = v01

### WIND/WAVES Summary Plot (Page 1) for 02-JUN-2013, DOY = 153

DAILY 2013-06-03 08:46:03  
 Re = 251.34 (230.37, -99.98, 10.29 GSE)



RAD2 Antenna Ey .....  
 Mode LIN(1) .....  
 SUM/SEP SEP .....  
 Toggle OFF .....  
 RAD1 Antenna .....  
 Mode .....  
 SUM/SEP .....  
 Toggle .....  
 TNR Antenna ExEy .....  
 Mode A-32 .....  
 Sweep ACE .....