

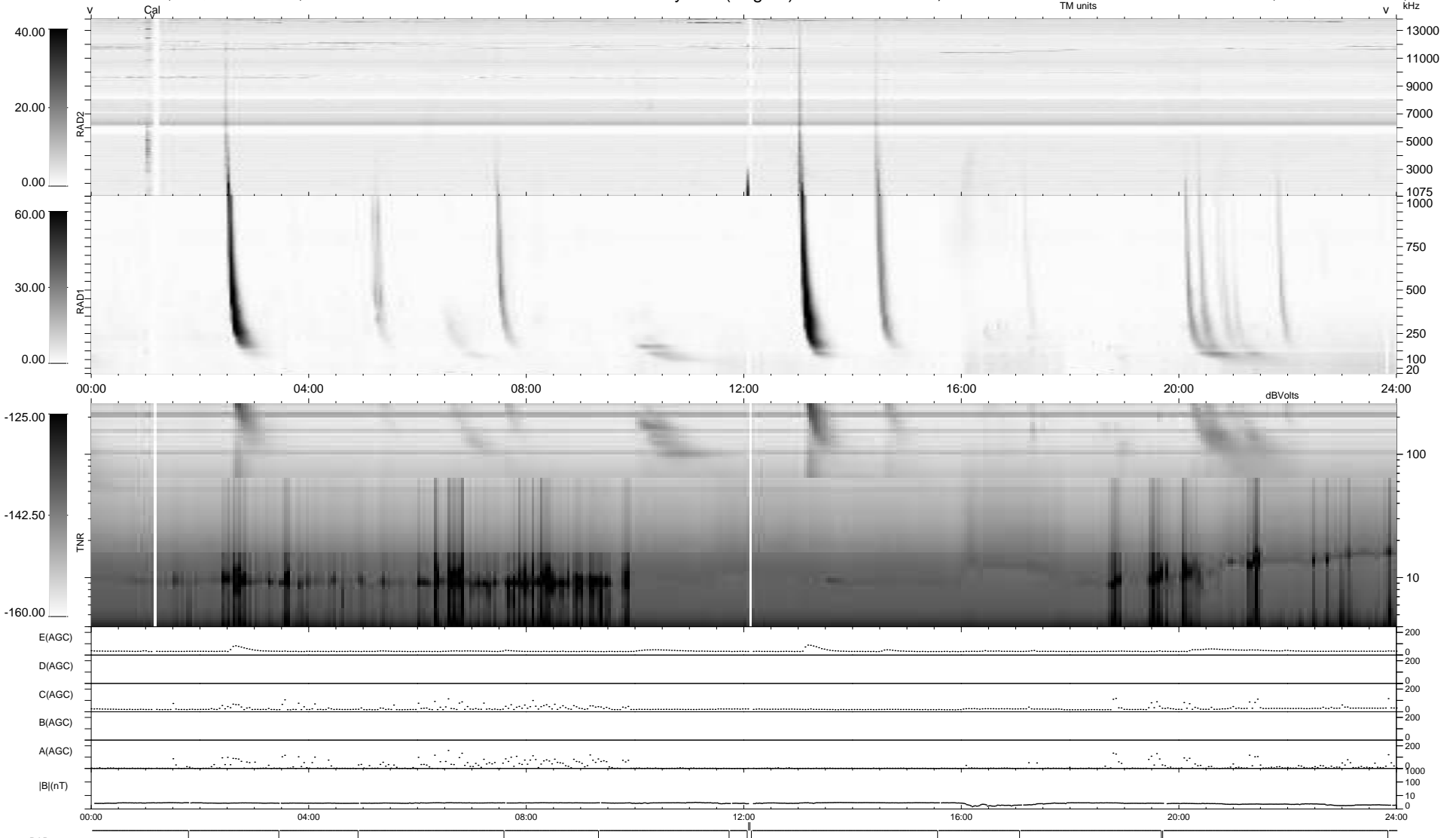
13 bad + 924 good MF/939MF projected (98%) - 2 missing MFs  
 Avg interval = 180 secs  
 Re = 253.85 (234.35, -96.76, 12.66 GSE)

windlib 2.0b

LZ version = v02

### WIND/WAVES Summary Plot (Page 1) for 30-MAY-2013, DOY = 150

DAILY 2013-06-03 10:46:03  
 Re = 253.30 (233.35, -97.77, 12.09 GSE)



```

RAD2
Antenna Ey .....
Mode LIN(1) .....
SUM/SEP SEP .....
Toggle OFF .....

RAD1
Antenna Ex .....
Mode LIS(2,4) .....
SUM/SEP SUM .....
Toggle OFF .....

TNR
Antenna ExEy .....
Mode A-32 .....
Sweep ACE .....
  
```