

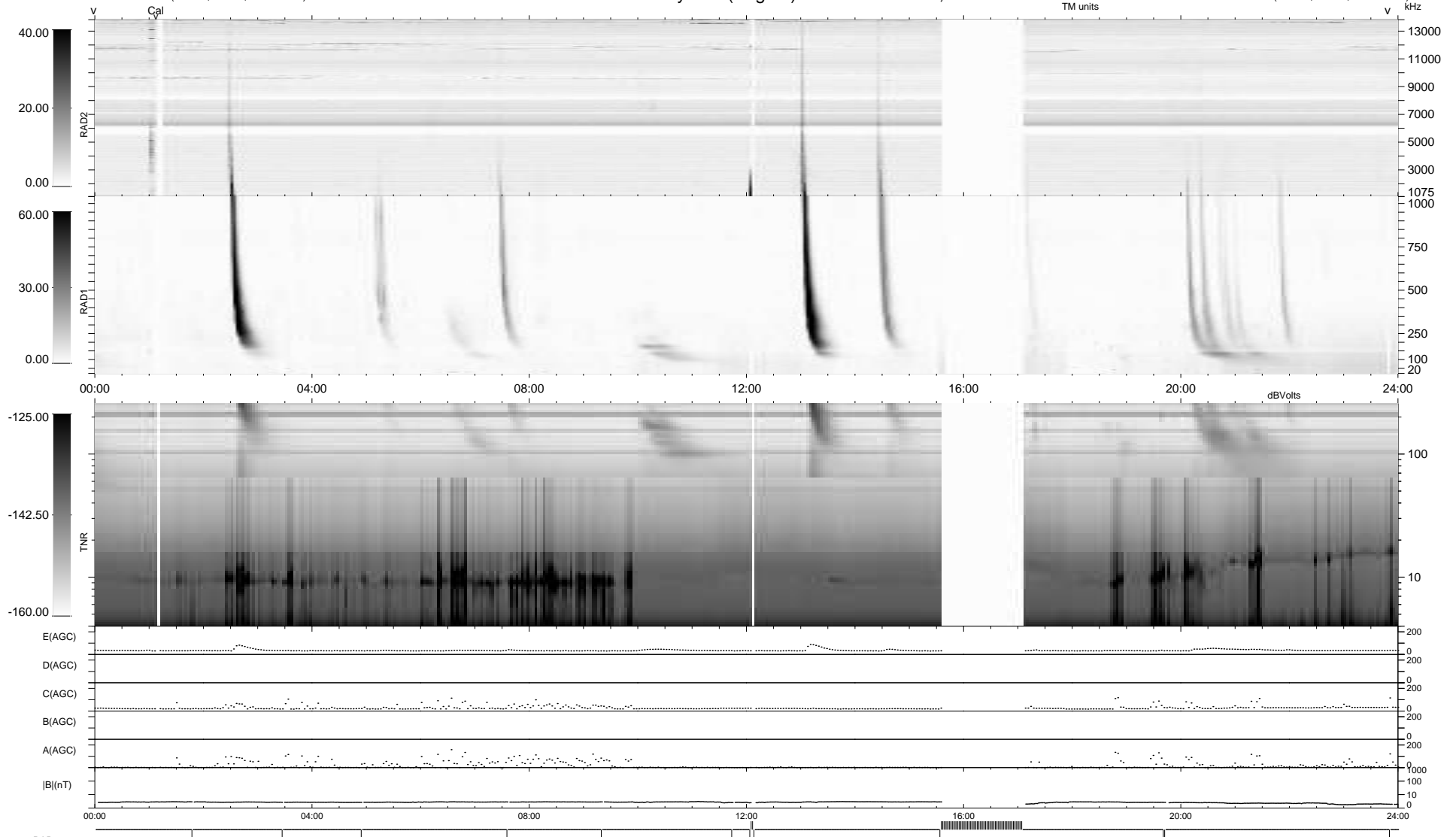
12 bad + 866 good MF/939MF projected (92%) - 61 missing MFs
 Avg interval = 180 secs
 Re = 253.85 (234.35, -96.76, 12.66 GSE)

windlib 2.0b

LZ version = v01

WIND/WAVES Summary Plot (Page 1) for 30-MAY-2013, DOY = 150

DAILY 2013-05-31 07:46:03
 Re = 253.30 (233.35, -97.77, 12.09 GSE)



RAD2
 Antenna Ey
 Mode LIN(1)
 SUM/SEP SEP
 Toggle OFF

RAD1
 Antenna Ex
 Mode LIS(2,4)
 SUM/SEP SUM
 Toggle OFF

TNR
 Antenna ExEy
 Mode A-32
 Sweep ACE