

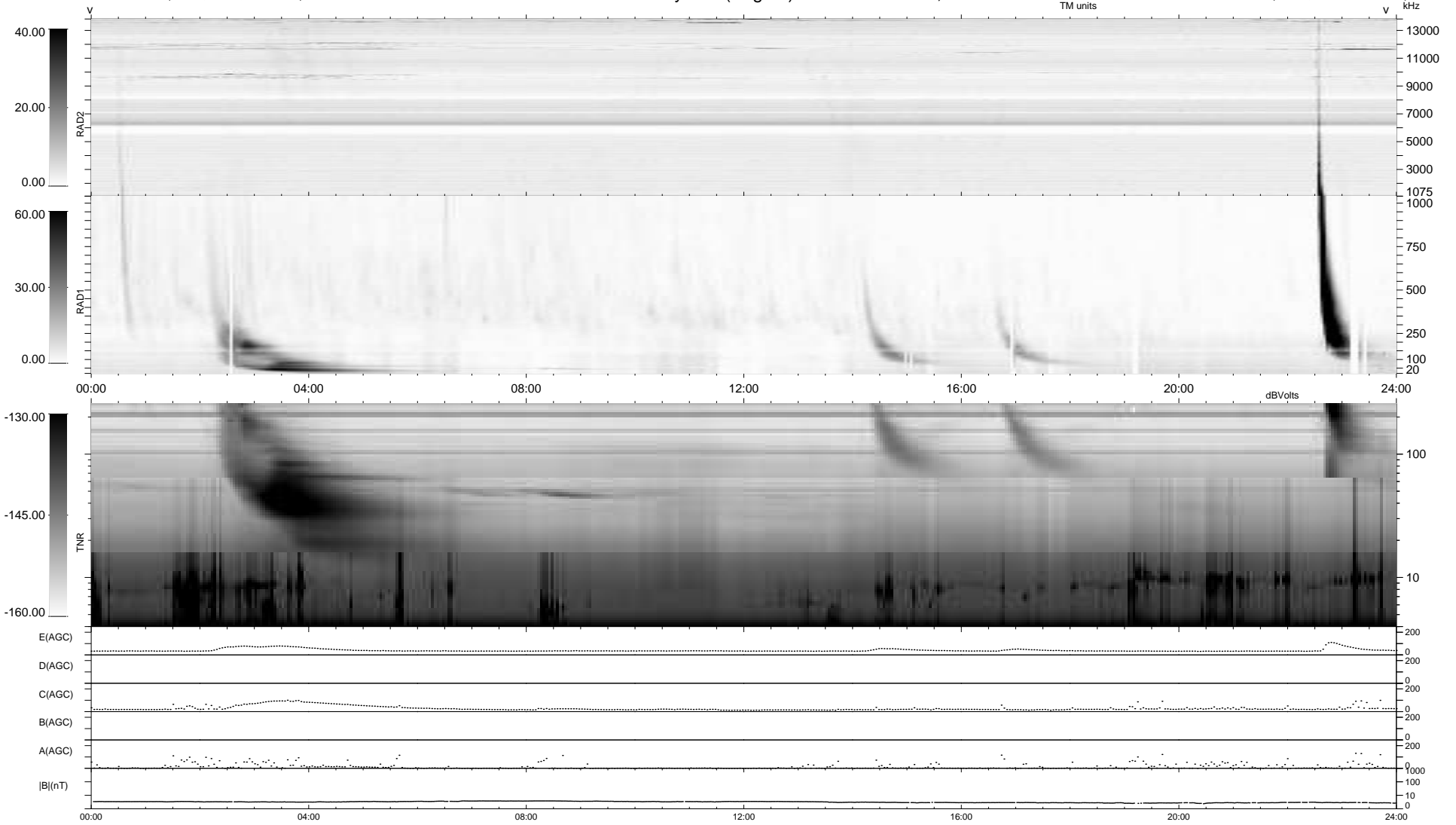
23 bad + 917 good MF/940MF projected (97%) - 0 missing MFs
 Avg interval = 180 secs
 Re = -254.38 (235.37, -95.59, 13.21 GSE)

windlib 2.0b

LZ version = v01

WIND/WAVES Summary Plot (Page 1) for 29-MAY-2013, DOY = 149

DAILY 2013-05-30 18:46:04
 Re = 253.86 (234.36, -96.75, 12.66 GSE)



RAD2
 Antenna Ey
 Mode LIN(1)
 SUM/SEP SEP
 Toggle OFF
 RAD1
 Antenna Ex
 Mode LIS(2,4)
 SUM/SEP SUM
 Toggle OFF
 TNR
 Antenna ExEy
 Mode A-32
 Sweep ACE