

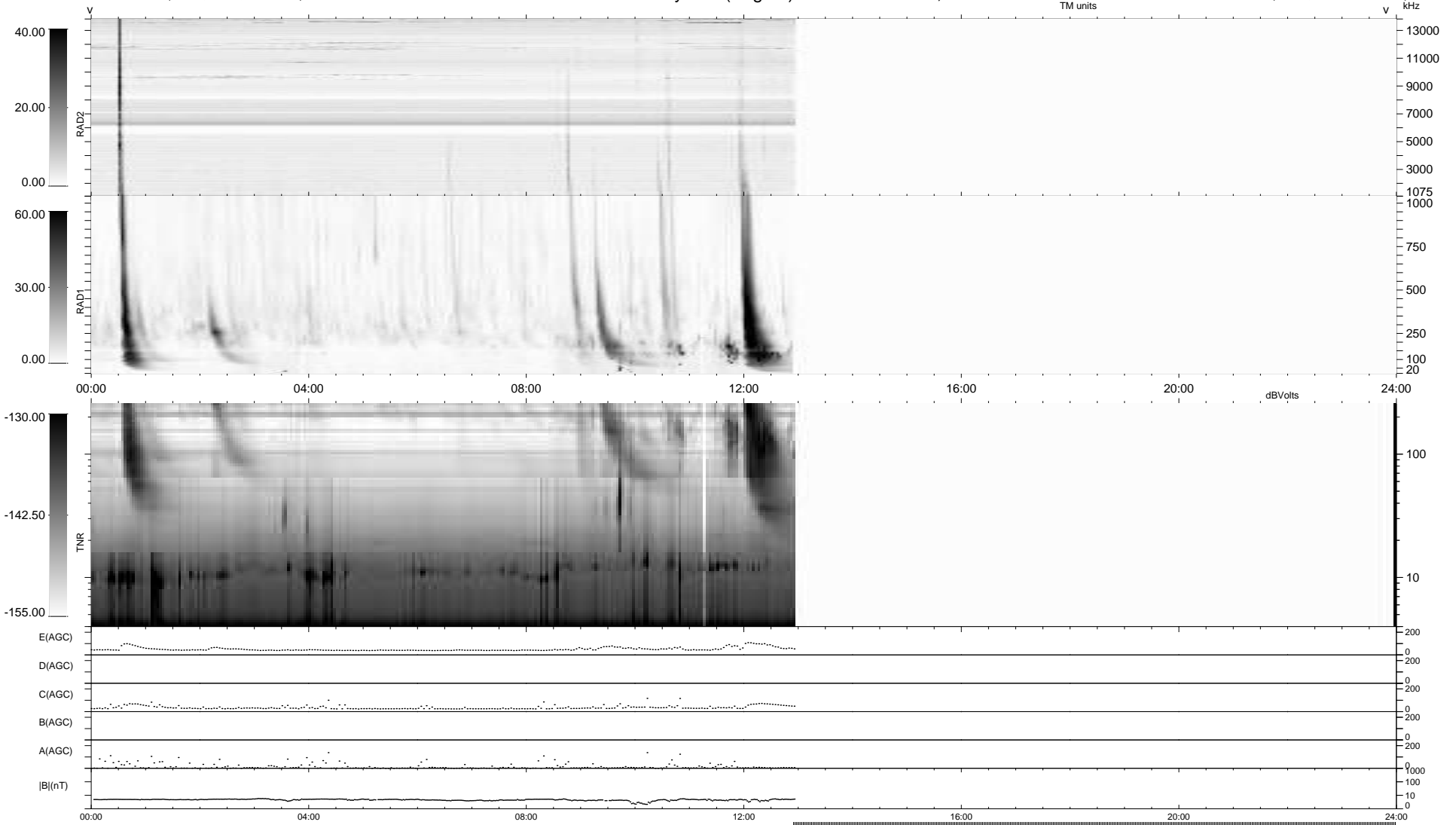
6 bad + 499 good MF/939MF projected (53%) - 434 missing MFs  
 Avg interval = 180 secs  
 Re = -255.38 (237.47, -92.85, 14.27 GSE)

windlib 2.0b

LZ version = v01

### WIND/WAVES Summary Plot (Page 1) for 27-MAY-2013, DOY = 147

DAILY 2013-05-29 00:46:03  
 Re = 254.89 (236.42, -94.28, 13.75 GSE)



RAD2  
 Antenna Ey .....  
 Mode LIN(1) .....  
 SUM/SEP SEP .....  
 Toggle OFF .....  
 RAD1  
 Antenna Ex .....  
 Mode LIS(2,4) .....  
 SUM/SEP SUM .....  
 Toggle OFF .....  
 TNR  
 Antenna ExEy .....  
 Mode A-32 .....  
 Sweep ACE .....