

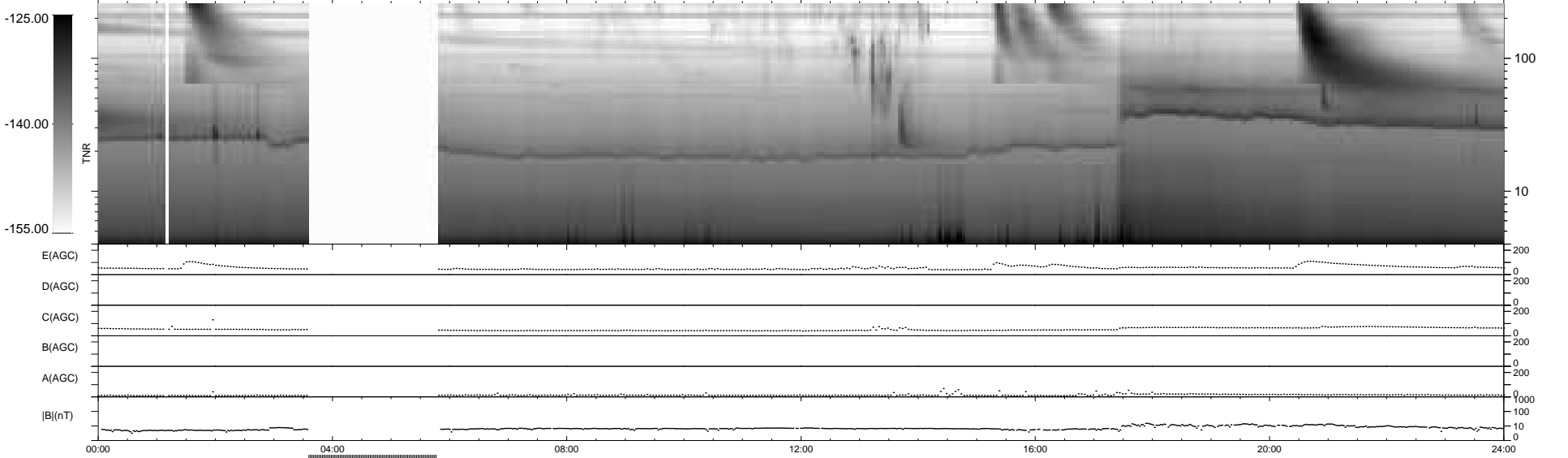
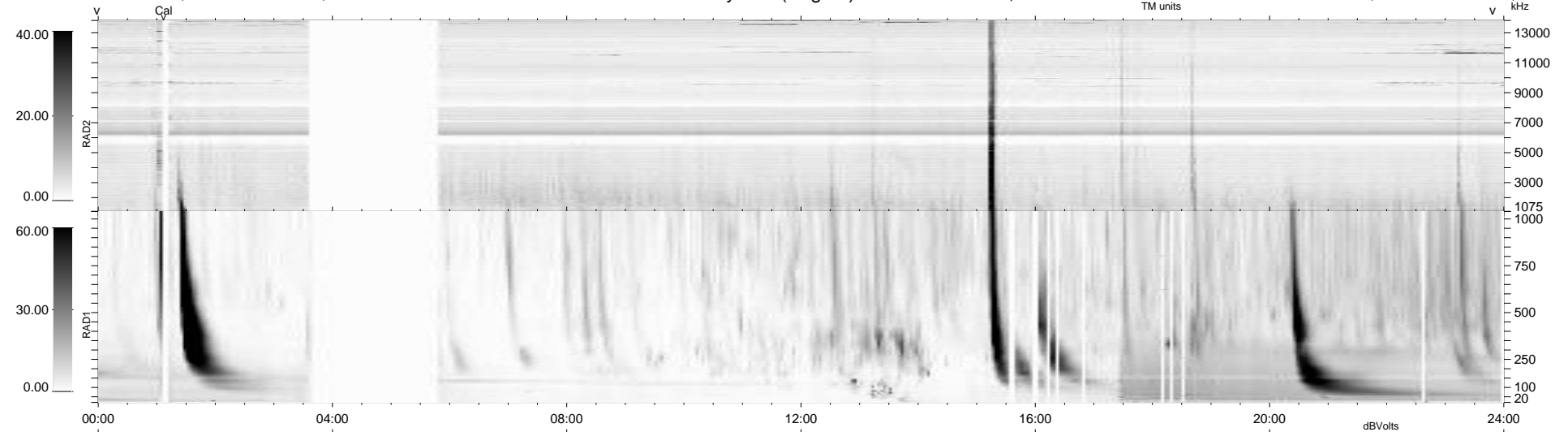
24 bad + 829 good MF/939MF projected (88%) - 86 missing MFs
 Avg interval = 180 secs
 Re = - 256.85 (240.84, -87.86, 15.73 GSE)

windlib 2.0b

LZ version = v01

WIND/WAVES Summary Plot (Page 1) for 24-MAY-2013, DOY = 144

DAILY 2013-05-25 06:46:03
 Re = 256.36 (239.70, -89.62, 15.26 GSE)



RAD2
 Antenna Ey
 Mode LIN(1)
 SUM/SEP SEP
 Toggle OFF
 RAD1
 Antenna Ex
 Mode LIS(2,4)
 SUM/SEP SUM
 Toggle OFF
 TNR
 Antenna ExEy
 Mode A-32
 Sweep ACE