

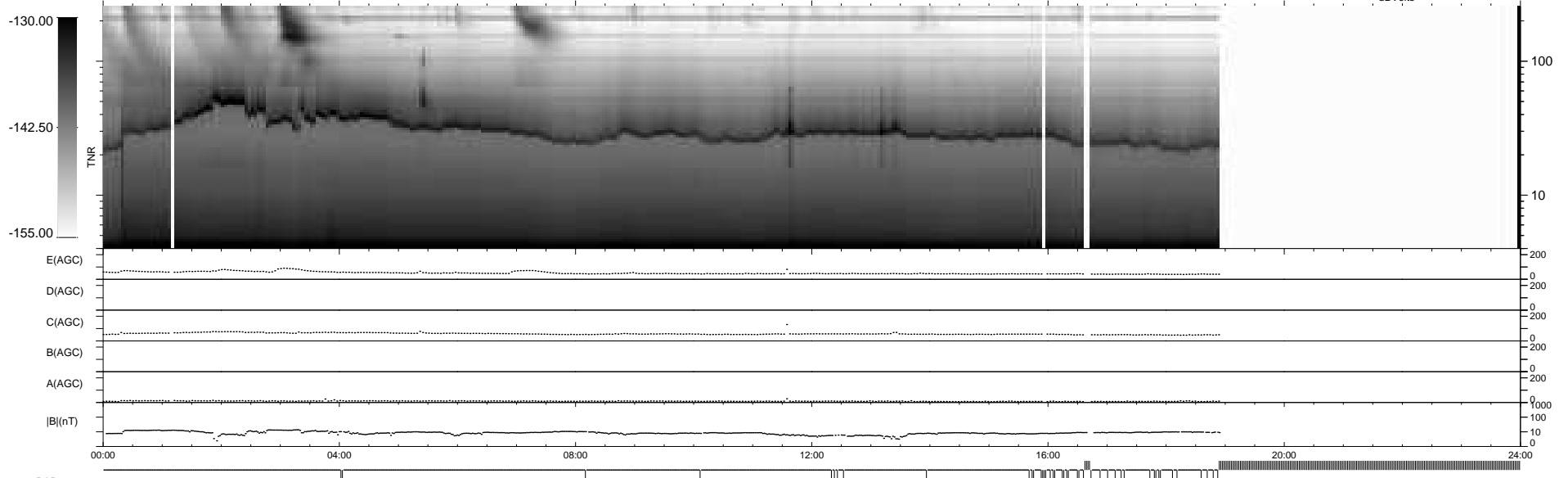
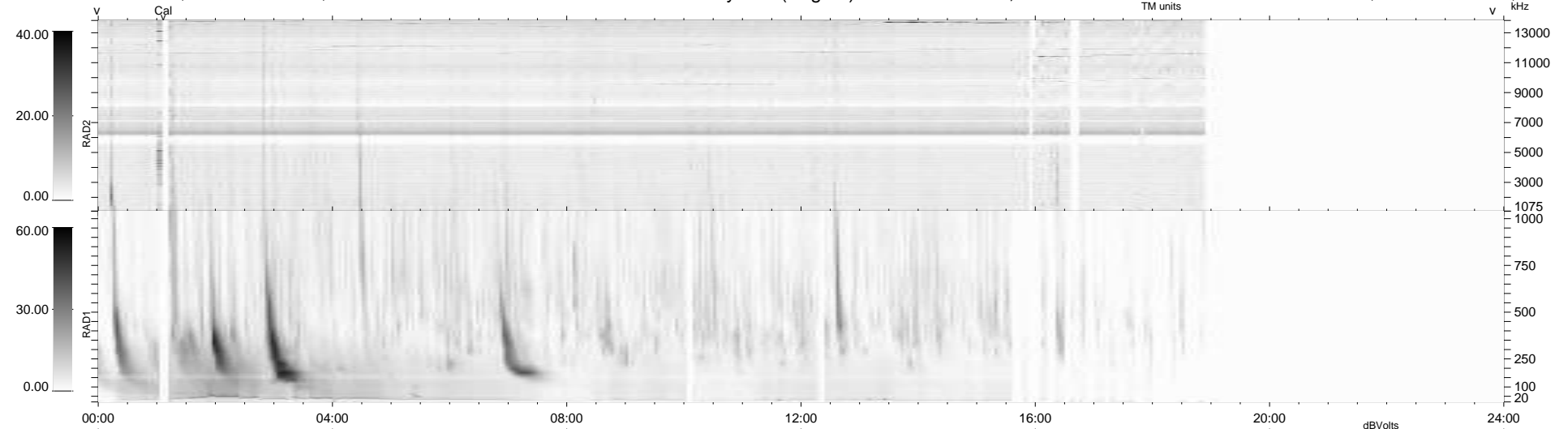
43 bad + 692 good MF/939MF projected (73%) - 204 missing MFs
 Avg interval = 180 secs
 Re = - 259.91 (247.98, -75.66, 18.25 GSE)

windlib 2.0b

LZ version = v01

WIND/WAVES Summary Plot (Page 1) for 18-MAY-2013, DOY = 138

DAILY 2013-05-20 18:46:03
 Re = 259.41 (246.81, -77.83, 17.87 GSE)



```

RAD2
Antenna Ey .....
Mode LIN(1) .....
SUM/SEP SEP .....
Toggle OFF .....

RAD1
Antenna Ex .....
Mode LIS(2,4) .....
SUM/SEP SUM .....
Toggle OFF .....

TNR
Antenna ExEy .....
Mode A-32 .....
Sweep ACE .....
  
```