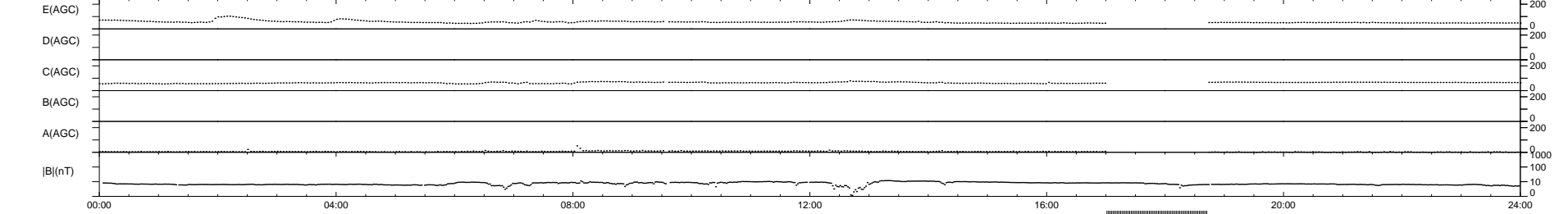
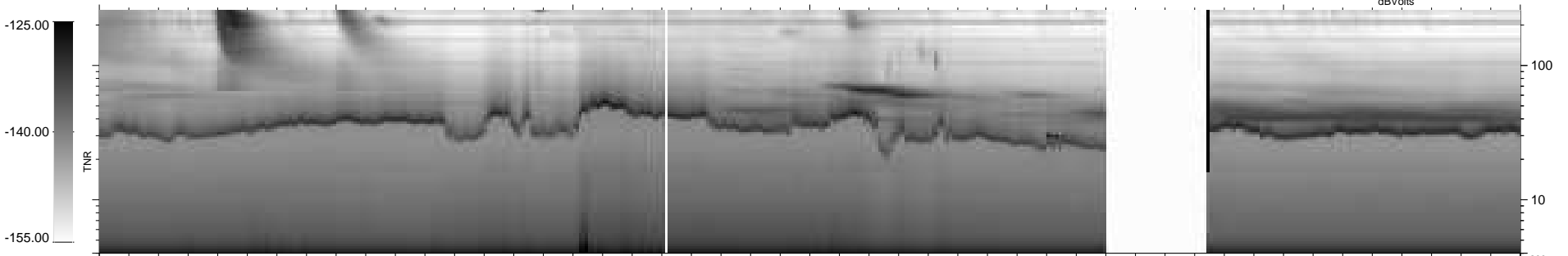
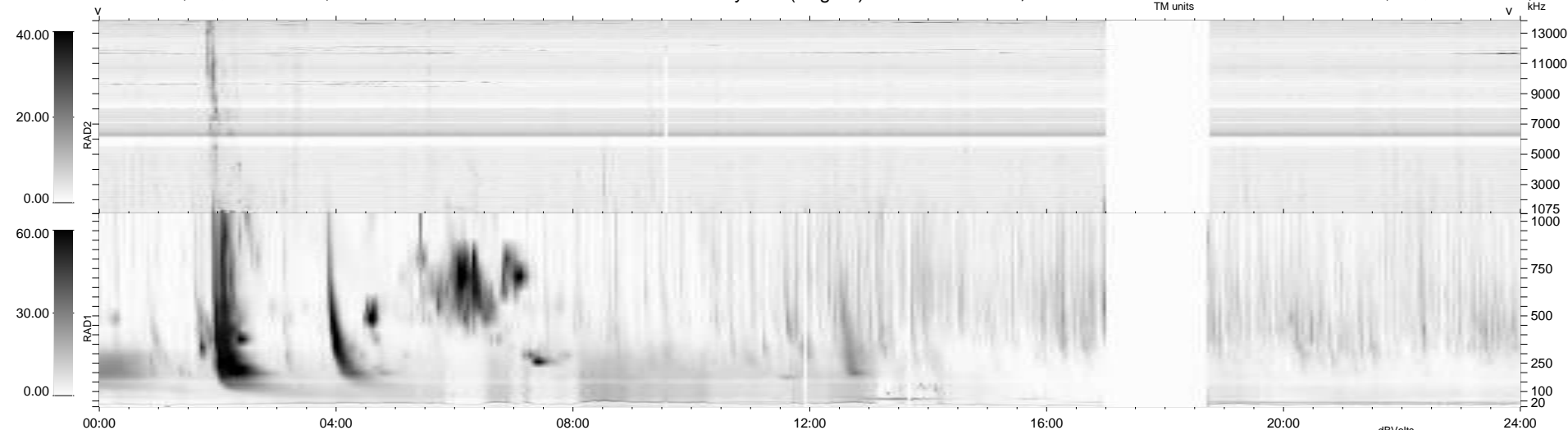


9 bad + 863 good MF/939MF projected (91%) - 67 missing MFs
 Avg interval = 180 secs
 Re = 261.29 (251.34, -68.75, 19.32 GSE)

windlib 2.0b LZ version = v01
 DAILY 2013-05-20 10:46:03
 Re = 260.86 (250.27, -71.09, 18.98 GSE)

WIND/WAVES Summary Plot (Page 1) for 15-MAY-2013, DOY = 135



```

RAD2
Antenna Ey .....
Mode LIN(1) .....
SUM/SEP SEP .....
Toggle OFF .....

RAD1
Antenna Ex .....
Mode LIS(2,4) .....
SUM/SEP SUM .....
Toggle OFF .....

TNR
Antenna ExEy .....
Mode A-32 .....
Sweep ACE .....
  
```