

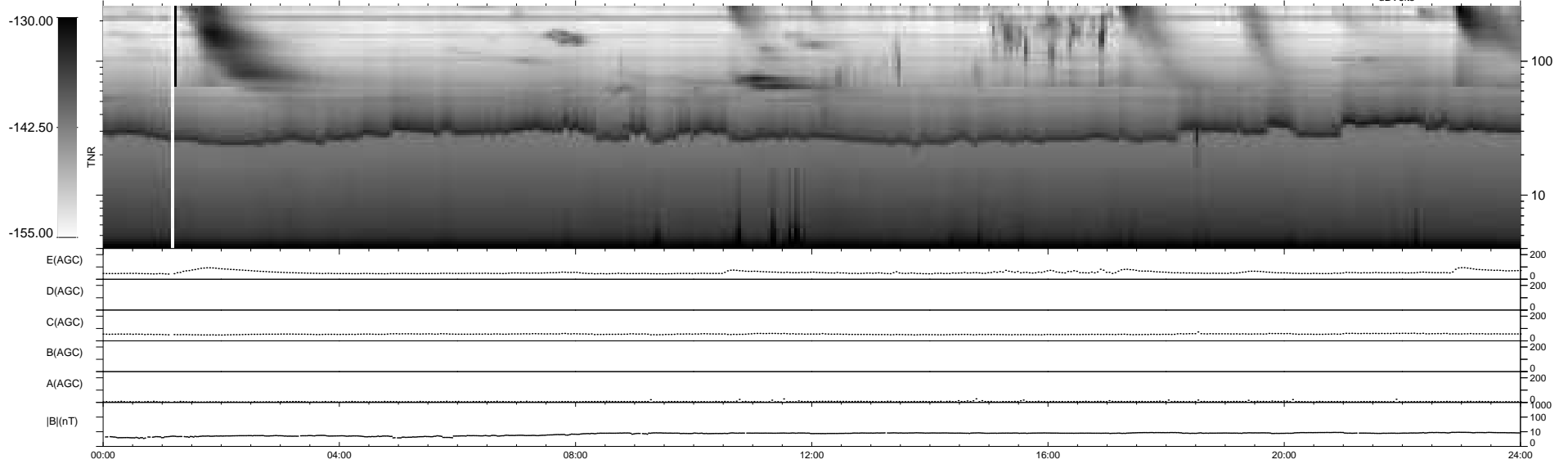
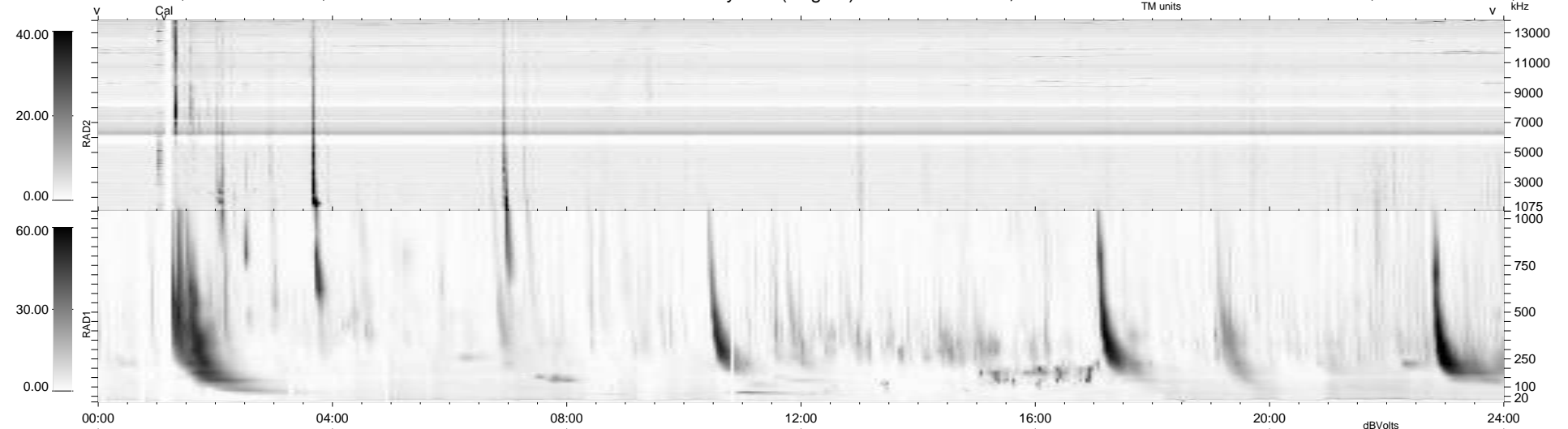
10 bad + 930 good MF/940MF projected (98%) - 0 missing MFs  
 Avg interval = 180 secs  
 Re = 261.68 (252.37, -66.33, 19.65 GSE)

windlib 2.0b

LZ version = v01

### WIND/WAVES Summary Plot (Page 1) for 14-MAY-2013, DOY = 134

DAILY 2013-05-15 20:46:03  
 Re = 261.29 (251.35, -68.73, 19.32 GSE)



```

RAD2
Antenna  Ey .....
Mode     LIN(1) .....
SUM/SEP  SEP .....
Toggle   OFF .....

RAD1
Antenna  Ex .....
Mode     LIS(2,4) .....
SUM/SEP  SUM .....
Toggle   OFF .....

TNR
Antenna  ExEy .....
Mode     A-32 .....
Sweep    ACE .....
  
```