

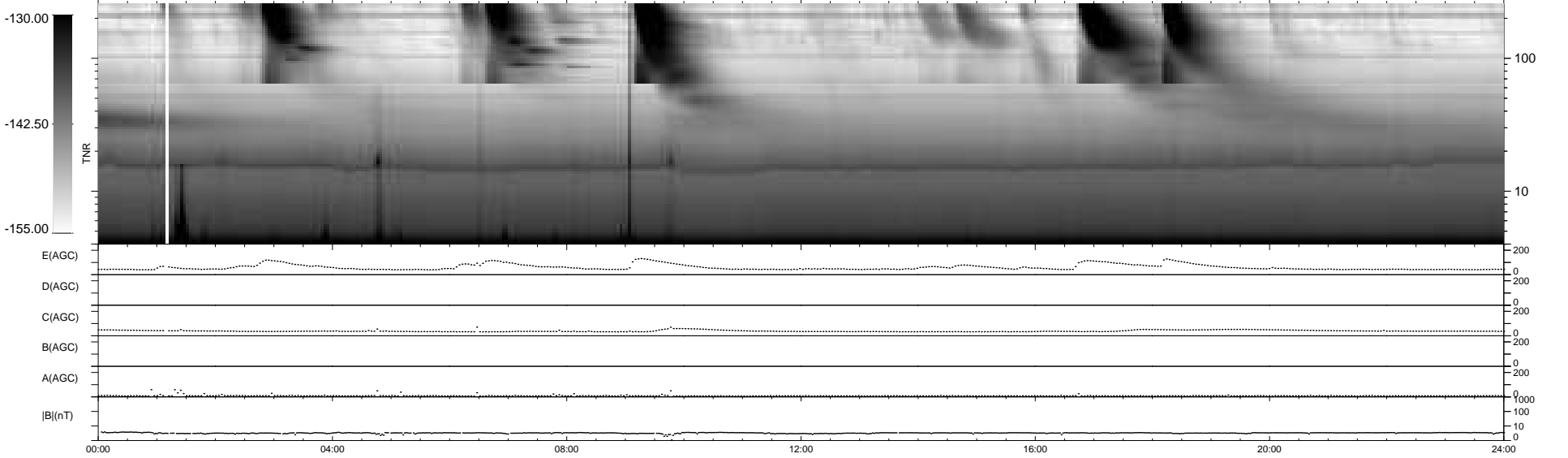
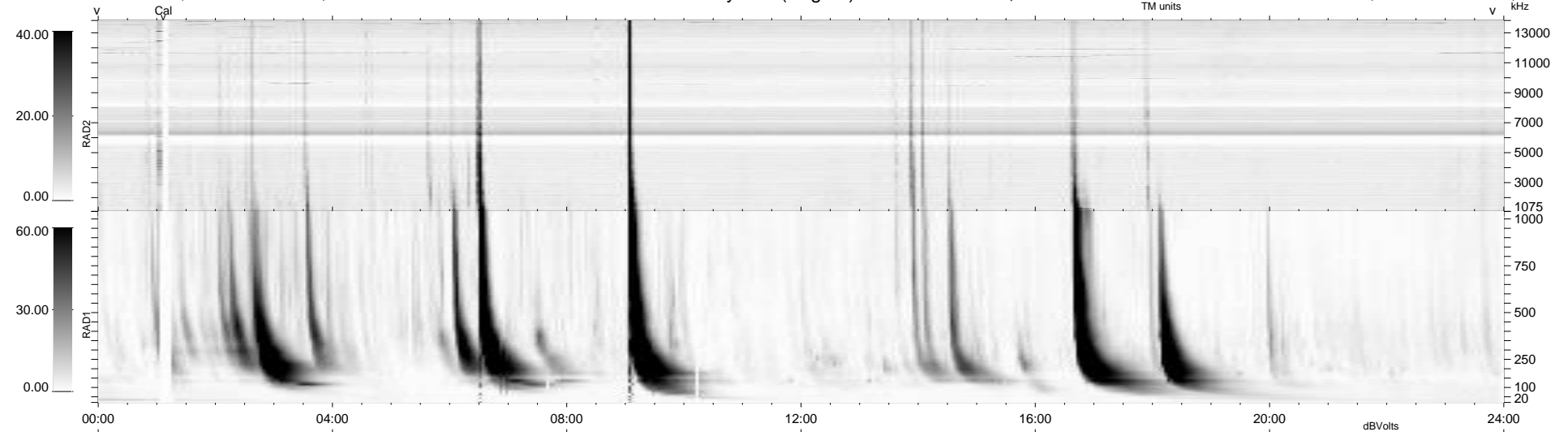
14 bad + 925 good MF/939MF projected (98%) - 0 missing MFs  
 Avg interval = 180 secs  
 Re = 262.84 (255.94, -56.09, 20.78 GSE)

windlib 2.0b

LZ version = v01

### WIND/WAVES Summary Plot (Page 1) for 10-MAY-2013, DOY = 130

DAILY 2013-05-11 17:46:05  
 Re = 262.63 (255.15, -58.72, 20.52 GSE)



RAD2  
 Antenna Ey .....  
 Mode LIN(1) .....  
 SUM/SEP SEP .....  
 Toggle OFF .....  
 RAD1  
 Antenna Ex .....  
 Mode LIS(2,4) .....  
 SUM/SEP SUM .....  
 Toggle OFF .....  
 TNR  
 Antenna ExEy .....  
 Mode A-32 .....  
 Sweep ACE .....