

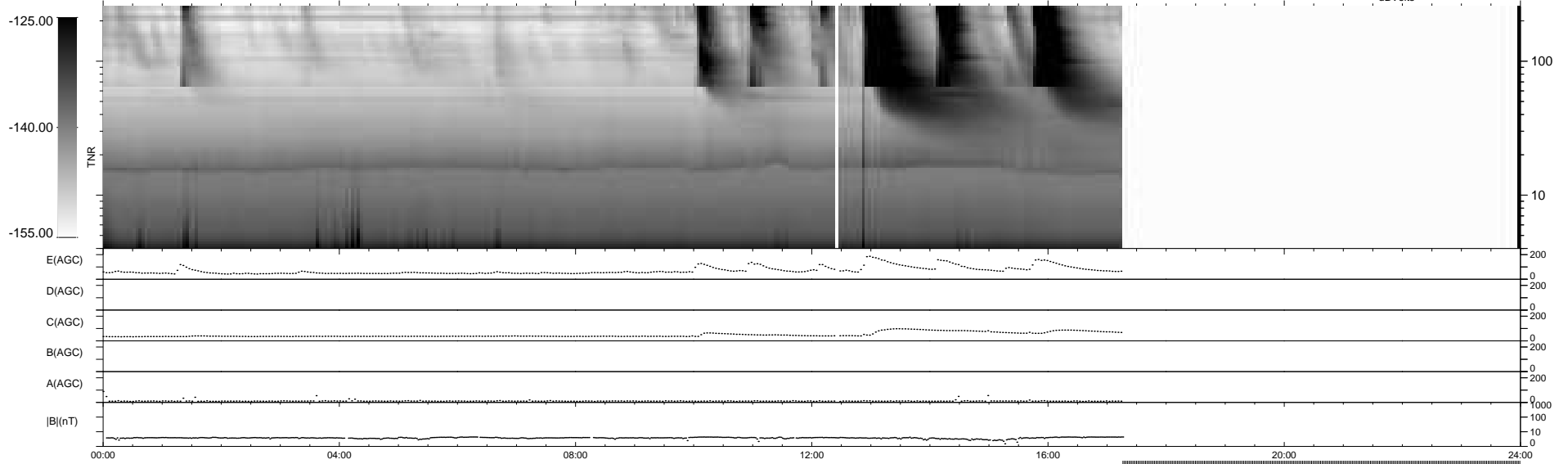
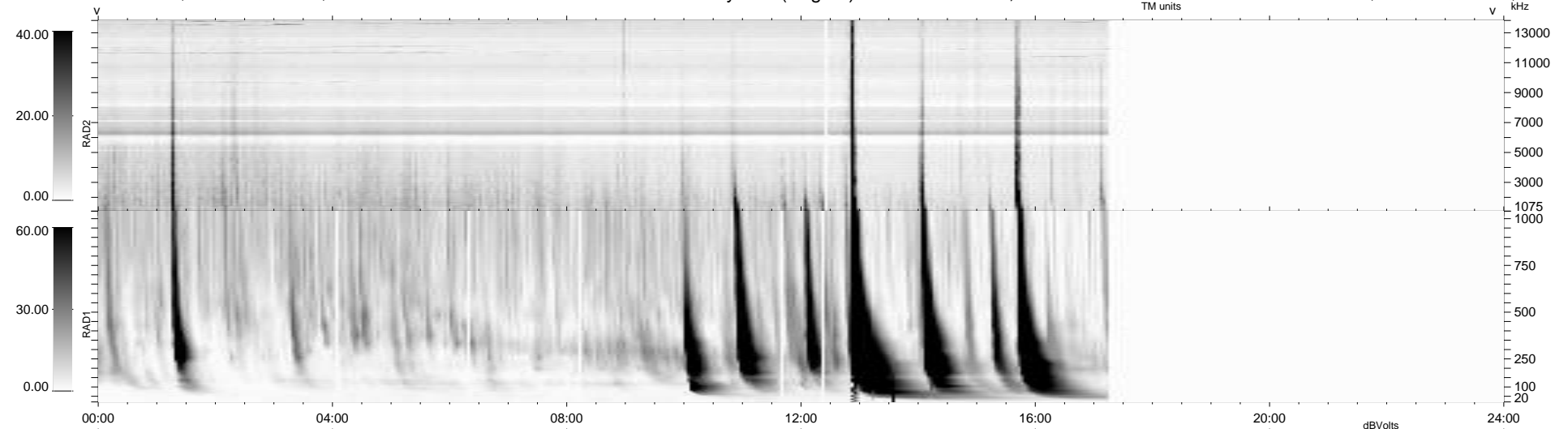
16 bad + 659 good MF/939MF projected (70%) - 264 missing MFs
 Avg interval = 180 secs
 Re = - 263.00 (256.67, -53.37, 21.02 GSE)

windlib 2.0b

LZ version = v01

WIND/WAVES Summary Plot (Page 1) for 09-MAY-2013, DOY = 129

DAILY 2013-05-10 20:46:05
 Re = 262.84 (255.95, -56.07, 20.78 GSE)



```

RAD2
Antenna Ey .....
Mode LIN(1) .....
SUM/SEP SEP .....
Toggle OFF .....

RAD1
Antenna Ex .....
Mode LIS(2,4) .....
SUM/SEP SUM .....
Toggle OFF .....

TNR
Antenna ExEy .....
Mode A-32 .....
Sweep ACE .....
  
```