

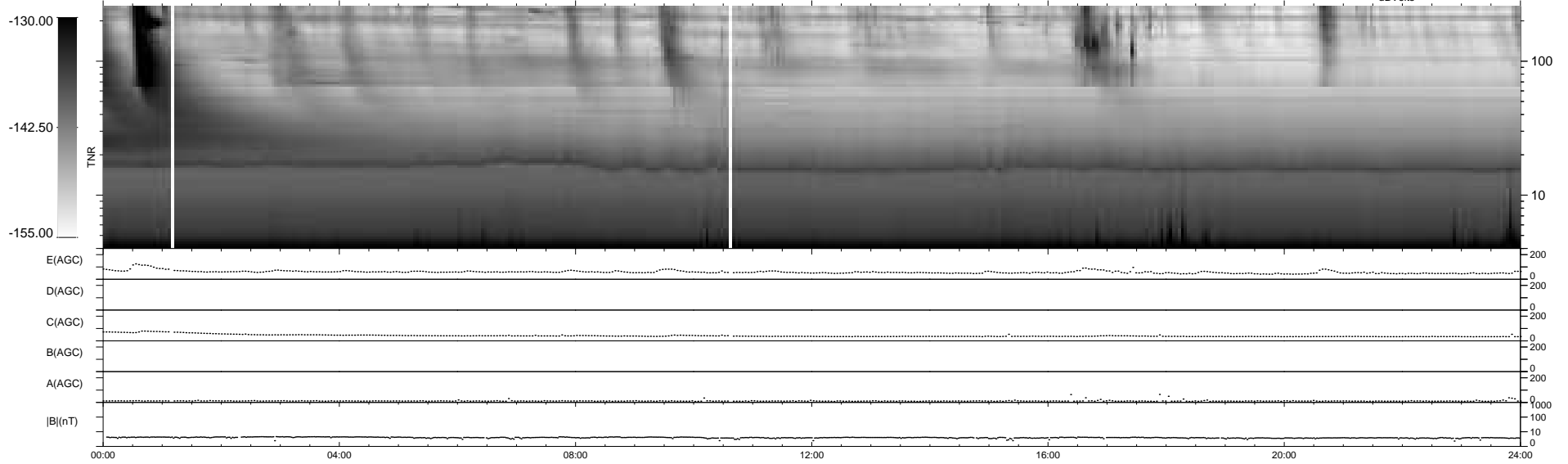
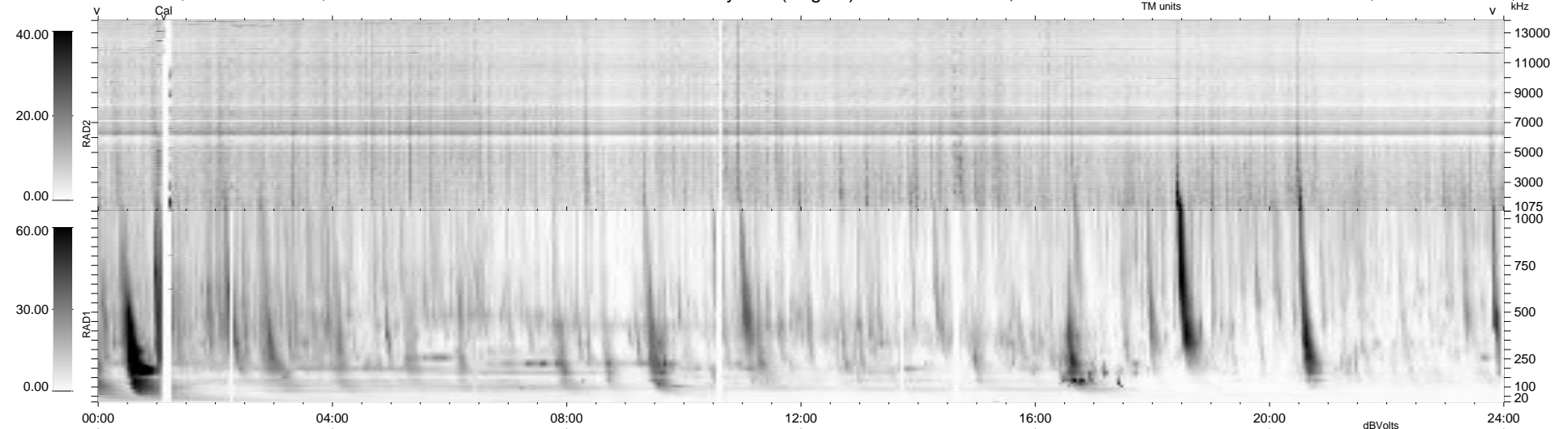
21 bad + 918 good MF/939MF projected (97%) - 0 missing MFs  
 Avg interval = 180 secs  
 Re = 263.12 (257.33, -50.59, 21.23 GSE)

windlib 2.0b

LZ version = v01

### WIND/WAVES Summary Plot (Page 1) for 08-MAY-2013, DOY = 128

DAILY 2013-05-09 18:46:03  
 Re = 263.01 (256.68, -53.35, 21.02 GSE)



```

RAD2
Antenna Ey .....
Mode LIN(1) .....
SUM/SEP SEP .....
Toggle OFF .....

RAD1
Antenna Ex .....
Mode LIS(2,4) .....
SUM/SEP SUM .....
Toggle OFF .....

TNR
Antenna ExEy .....
Mode A-32 .....
Sweep ACE .....
  
```