

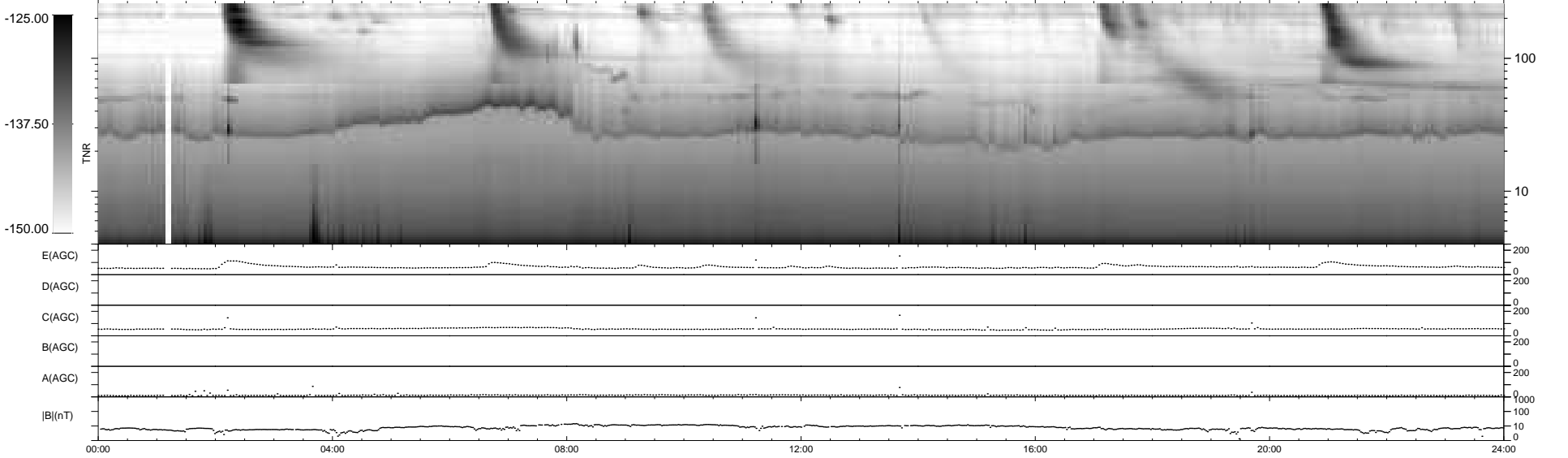
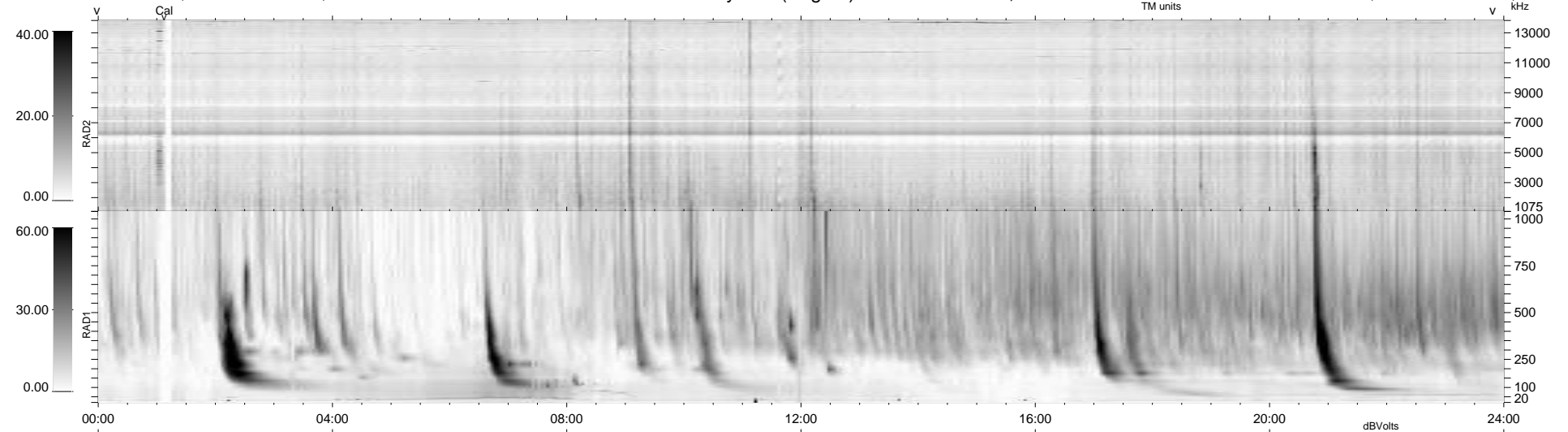
13 bad + 927 good MF/940MF projected (98%) - 0 missing MFs
 Avg interval = 180 secs
 Re = -263.03 (258.28, -44.77, 21.60 GSE)

windlib 2.0b

LZ version = v01

WIND/WAVES Summary Plot (Page 1) for 06-MAY-2013, DOY = 126

DAILY 2013-05-07 11:46:04
 Re = 263.00 (257.75, -47.68, 21.43 GSE)



```

RAD2
Antenna Ey .....
Mode LIN(1) .....
SUM/SEP SEP .....
Toggle OFF .....

RAD1
Antenna Ex .....
Mode LIS(2,4) .....
SUM/SEP SUM .....
Toggle OFF .....

TNR
Antenna ExEy .....
Mode A-32 .....
Sweep ACE .....
  
```