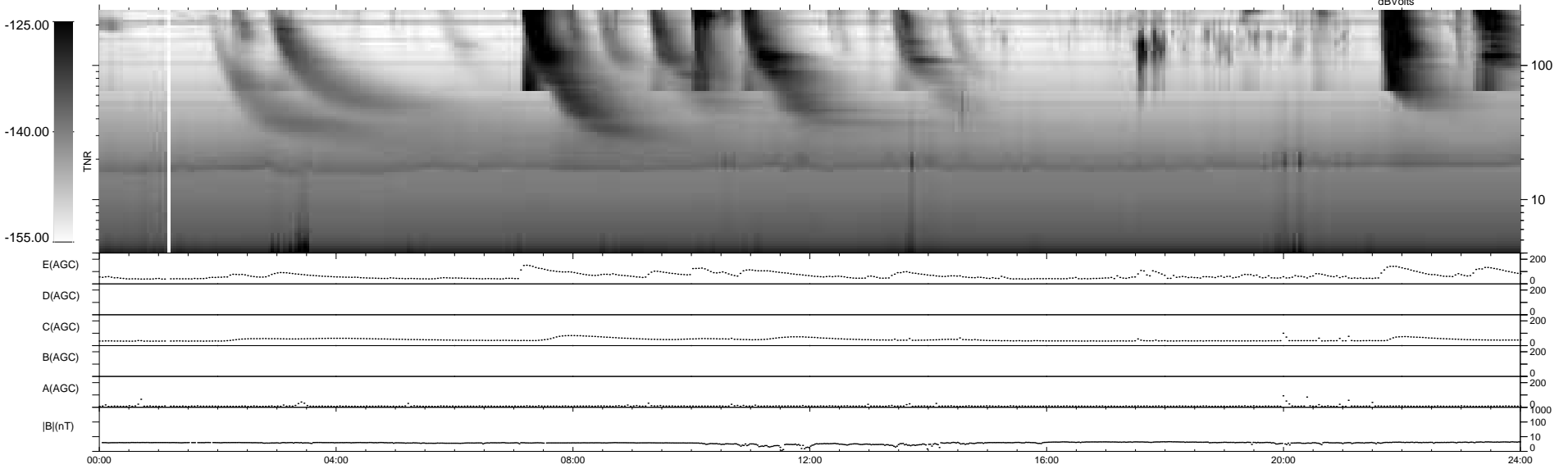
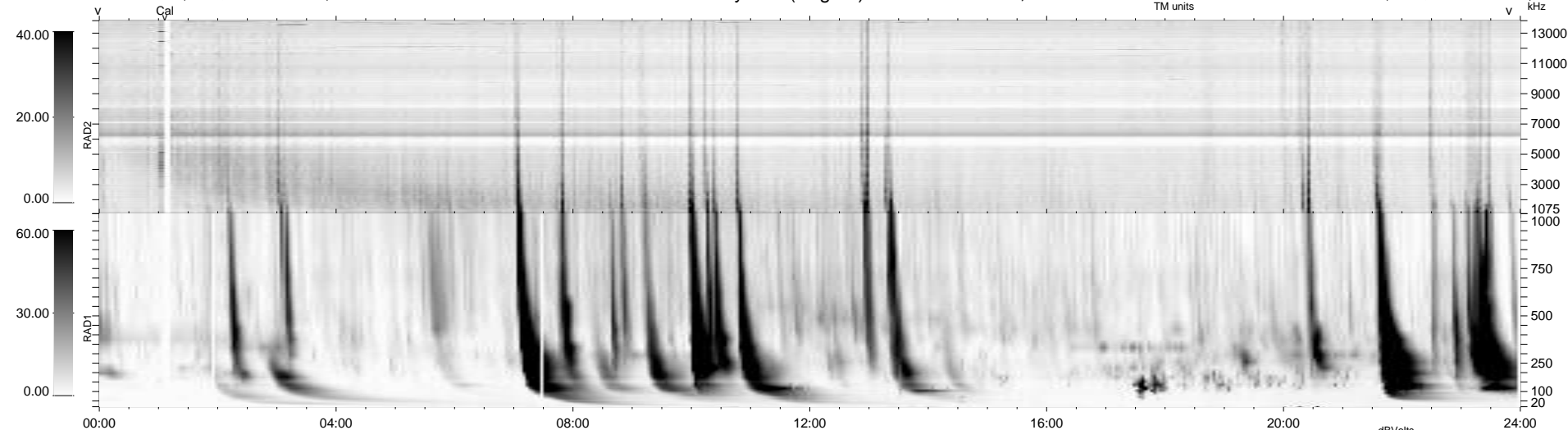


9 bad + 930 good MF/939MF projected (99%) - 0 missing MFs  
 Avg interval = 180 secs  
 Re = 262.94 (259.16, -38.71, 21.88 GSE)

windlib 2.0b LZ version = v01  
 DAILY 2013-05-05 19:46:08  
 Re = 263.00 (258.76, -41.76, 21.75 GSE)

### WIND/WAVES Summary Plot (Page 1) for 04-MAY-2013, DOY = 124



RAD2  
 Antenna Ey .....  
 Mode LIN(1) .....  
 SUM/SEP SEP .....  
 Toggle OFF .....  
 RAD1  
 Antenna Ex .....  
 Mode LIS(2,4) .....  
 SUM/SEP SUM .....  
 Toggle OFF .....  
 TNR  
 Antenna ExEy .....  
 Mode A-32 .....  
 Sweep ACE .....