

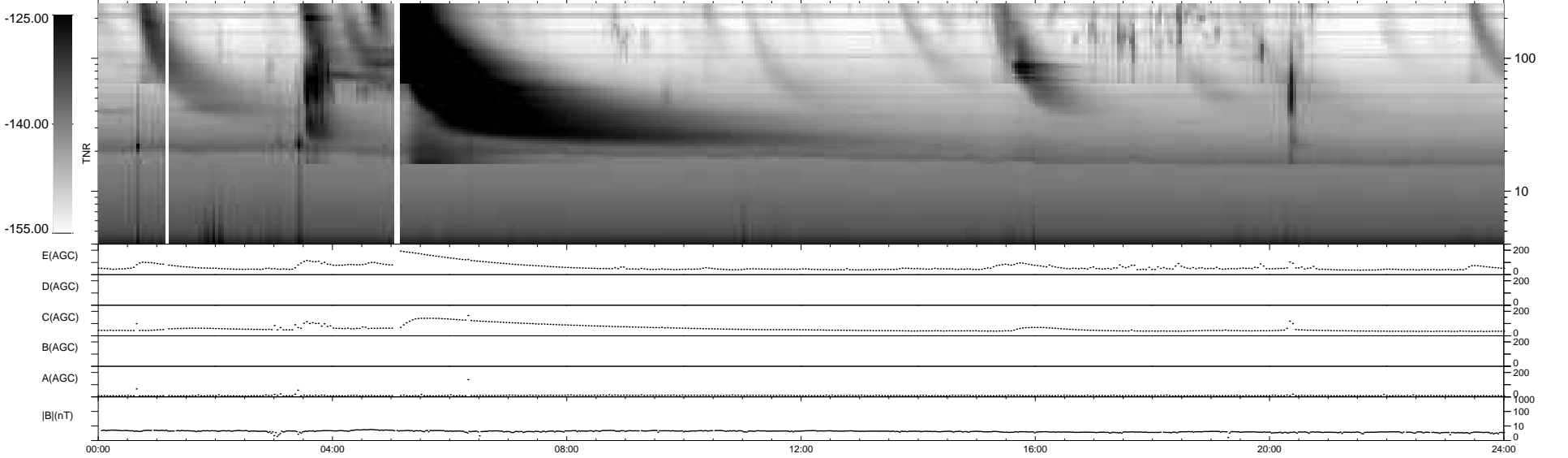
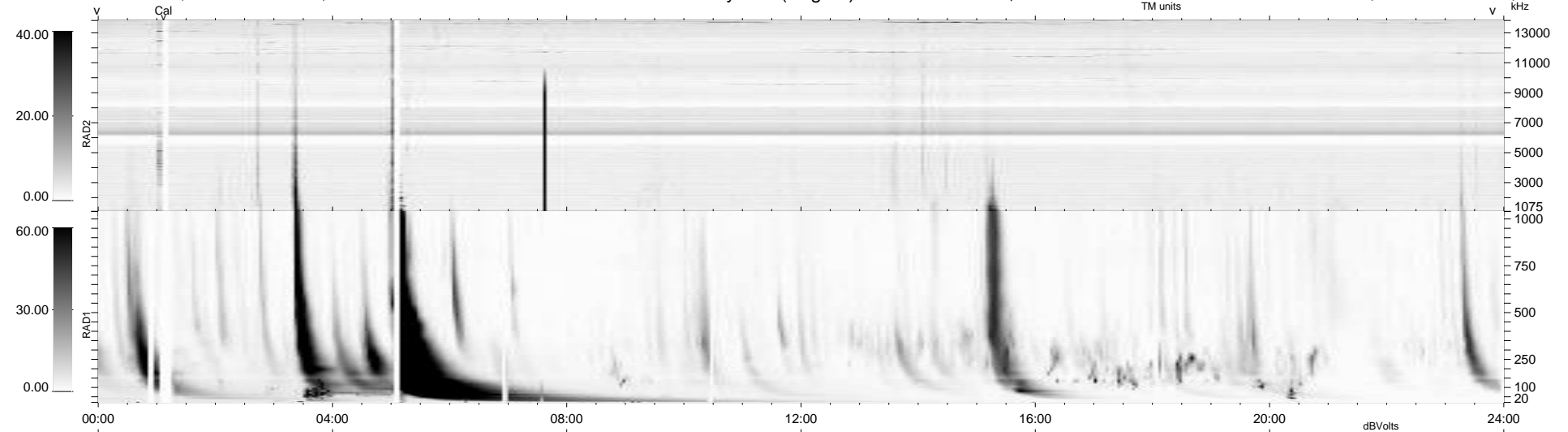
25 bad + 914 good MF/939MF projected (97%) - 0 missing MFs  
 Avg interval = 180 secs  
 Re = 262.73 (259.80, -32.33, 22.06 GSE)

windlib 2.0b

LZ version = v01

### WIND/WAVES Summary Plot (Page 1) for 02-MAY-2013, DOY = 122

DAILY 2013-05-03 20:46:07  
 Re = 262.85 (259.51, -35.54, 21.98 GSE)



```

RAD2
Antenna Ey .....
Mode LIN(1) .....
SUM/SEP SEP .....
Toggle OFF .....

RAD1
Antenna Ex .....
Mode LIS(2,4) .....
SUM/SEP SUM .....
Toggle OFF .....

TNR
Antenna ExEy .....
Mode A-32 .....
Sweep ACE .....
  
```