

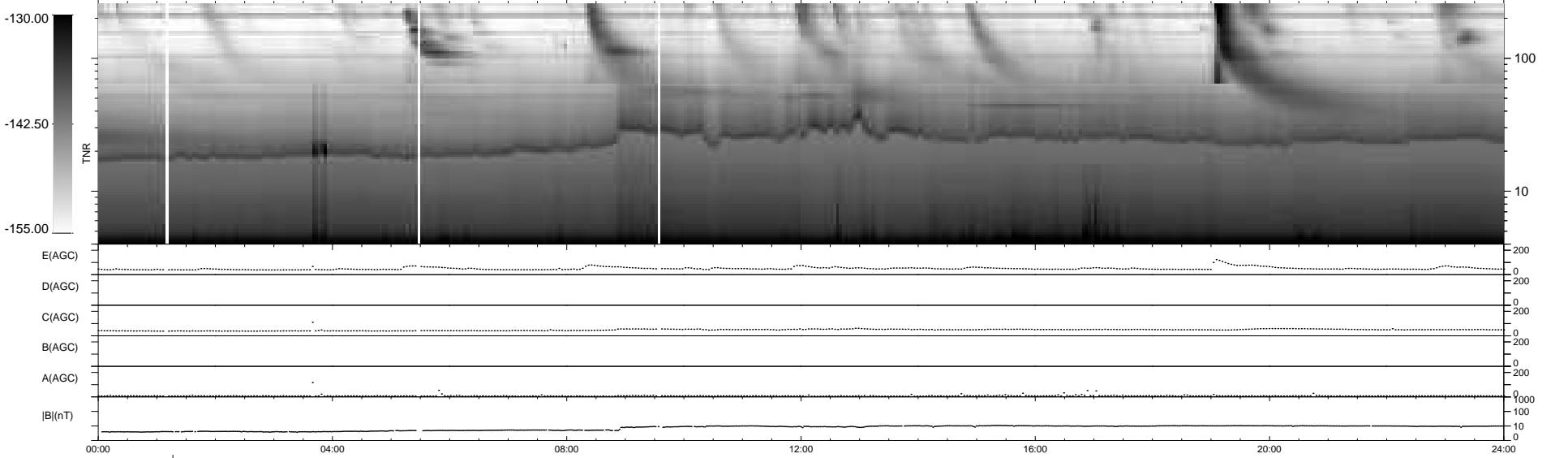
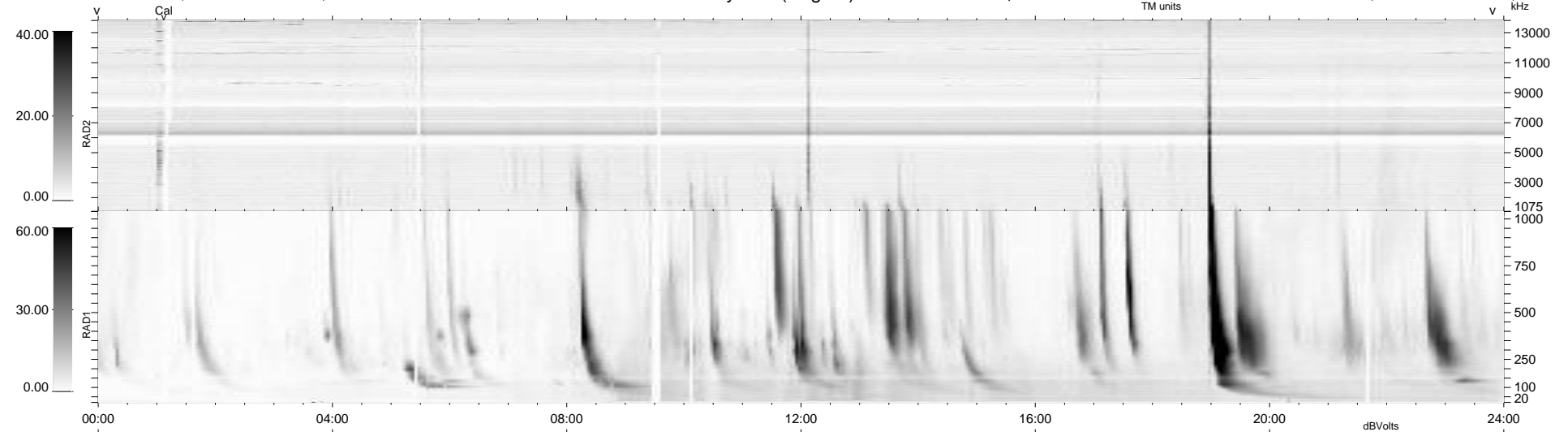
19 bad + 919 good MF/939MF projected (97%) - 1 missing MF
 Avg interval = 180 secs
 Re = 262.46 (260.26, -25.67, 22.14 GSE)

windlib 2.0b

LZ version = v01

WIND/WAVES Summary Plot (Page 1) for 30-APR-2013, DOY = 120

DAILY 2013-05-02 13:13:17
 Re = 262.60 (260.05, -29.01, 22.11 GSE)



RAD2
 Antenna Ey
 Mode LIN(1)
 SUM/SEP SEP
 Toggle OFF
 RAD1
 Antenna Ex
 Mode LIS(2,4)
 SUM/SEP SUM
 Toggle OFF
 TNR
 Antenna ExEy
 Mode A-32
 Sweep ACE