

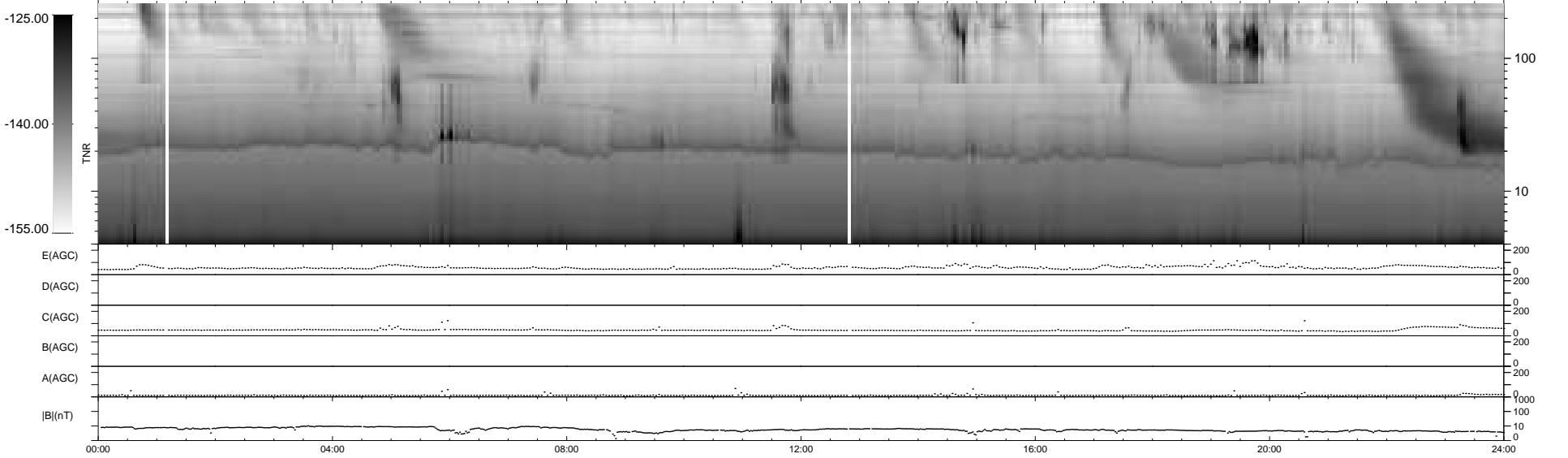
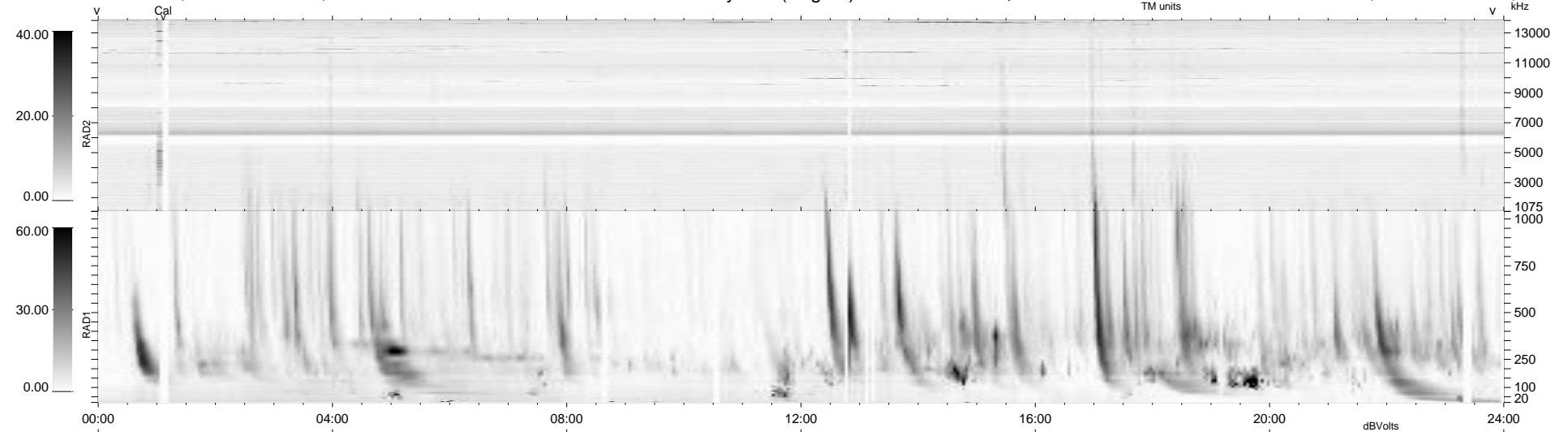
13 bad + 926 good MF/939MF projected (98%) - 0 missing MFs
 Avg interval = 180 secs
 Re = -262.06 (260.87, -11.71, 22.03 GSE)

windlib 2.0b

LZ version = v01

WIND/WAVES Summary Plot (Page 1) for 26-APR-2013, DOY = 116

DAILY 2013-05-02 13:09:20
 Re = 262.12 (260.75, -15.23, 22.09 GSE)



RAD2
 Antenna Ey
 Mode LIN(1)
 SUM/SEP SEP
 Toggle OFF
 RAD1
 Antenna Ex
 Mode LIS(2,4)
 SUM/SEP SUM
 Toggle OFF
 TNR
 Antenna ExEy
 Mode A-32
 Sweep ACE