

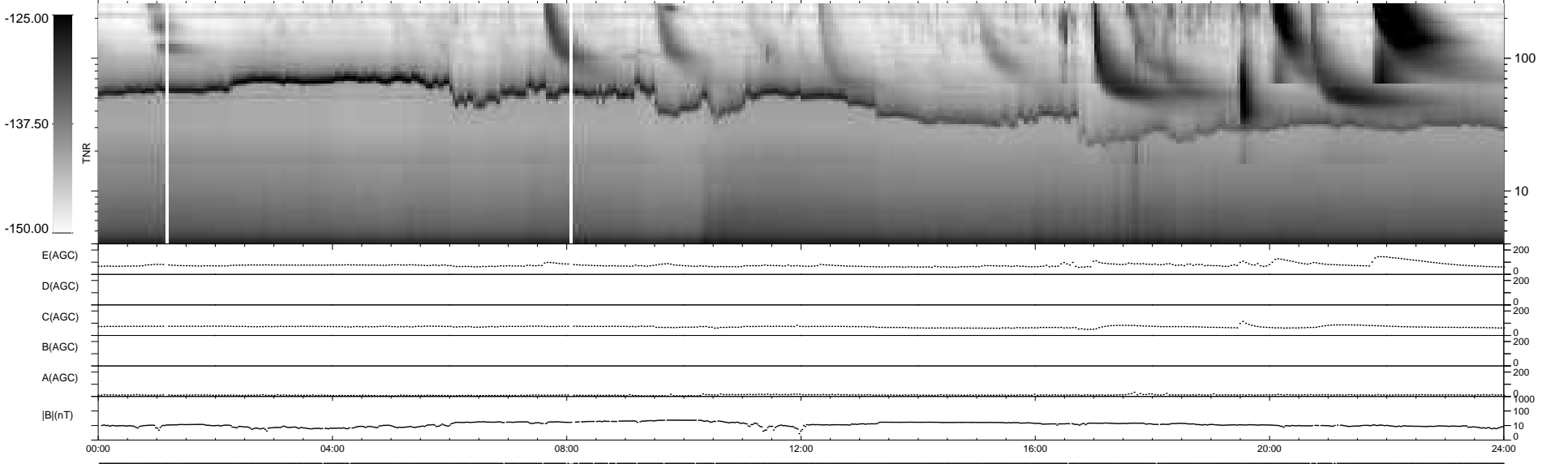
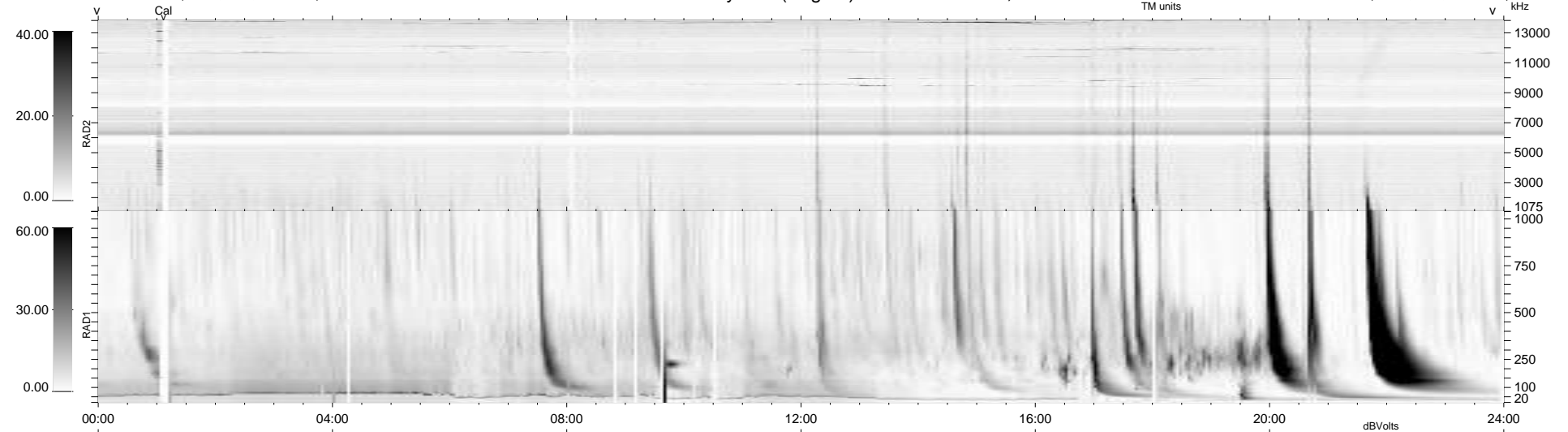
22 bad + 917 good MF/939MF projected (97%) - 0 missing MFs
 Avg interval = 180 secs
 Re = -262.01 (261.06, -4.58, 21.85 GSE)

windlib 2.0b

LZ version = v01

WIND/WAVES Summary Plot (Page 1) for 24-APR-2013, DOY = 114

DAILY 2013-05-02 13:07:21
 Re = 262.02 (260.97, -8.12, 21.95 GSE)



RAD2
 Antenna Ey
 Mode LIN(1)
 SUM/SEP SEP
 Toggle OFF

RAD1
 Antenna Ex
 Mode LIS(2,4)
 SUM/SEP SUM
 Toggle OFF

TNR
 Antenna ExEy
 Mode A-32
 Sweep ACE