

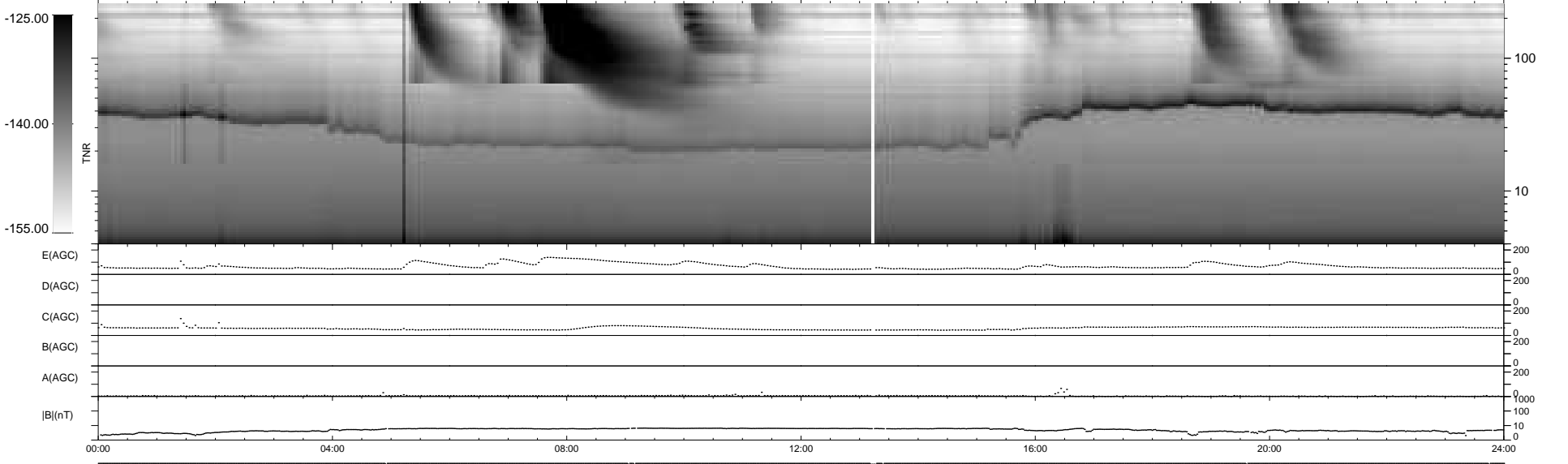
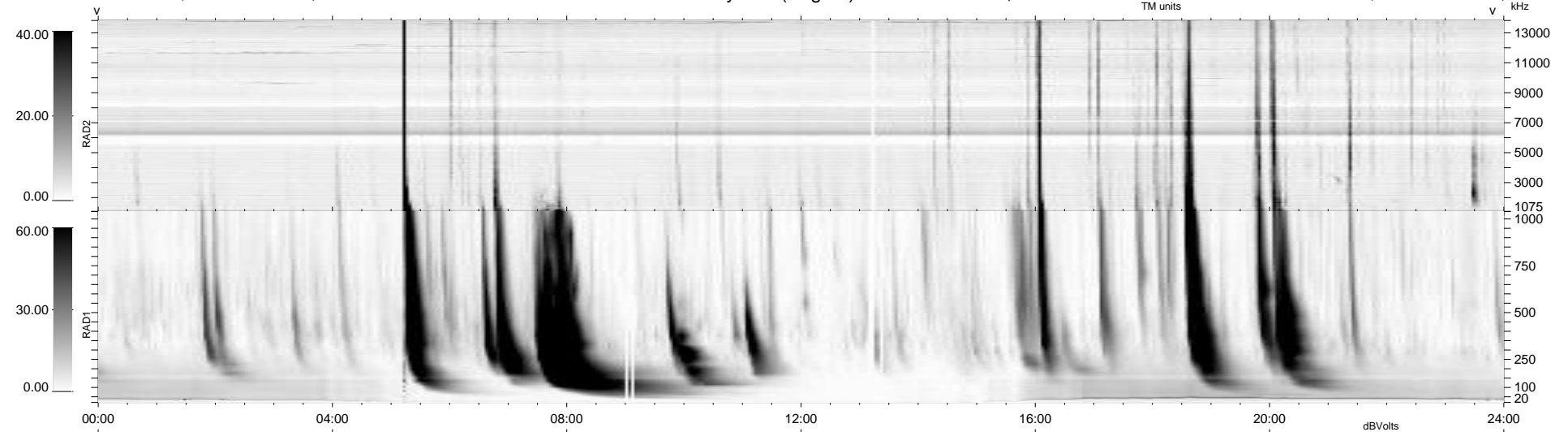
10 bad + 930 good MF/940MF projected (98%) - 0 missing MFs  
 Avg interval = 180 secs  
 Re = 262.12 (261.17, 6.02, 21.44 GSE)

windlib 2.0b

LZ version = v01

### WIND/WAVES Summary Plot (Page 1) for 21-APR-2013, DOY = 111

DAILY 2013-05-02 13:04:15  
 Re = 262.07 (261.17, 2.53, 21.60 GSE)



RAD2  
 Antenna Ey .....  
 Mode LIN(1) .....  
 SUM/SEP SEP .....  
 Toggle OFF .....  
 RAD1  
 Antenna Ex .....  
 Mode LIS(2,4) .....  
 SUM/SEP SUM .....  
 Toggle OFF .....  
 TNR  
 Antenna ExEy .....  
 Mode A-32 .....  
 Sweep ACE .....