

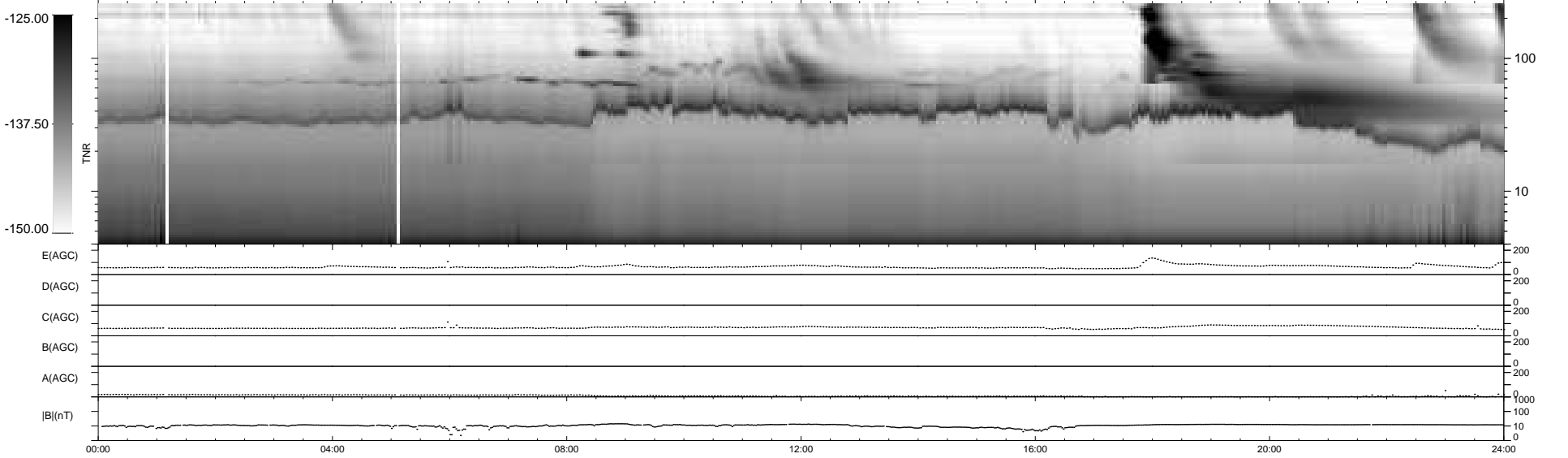
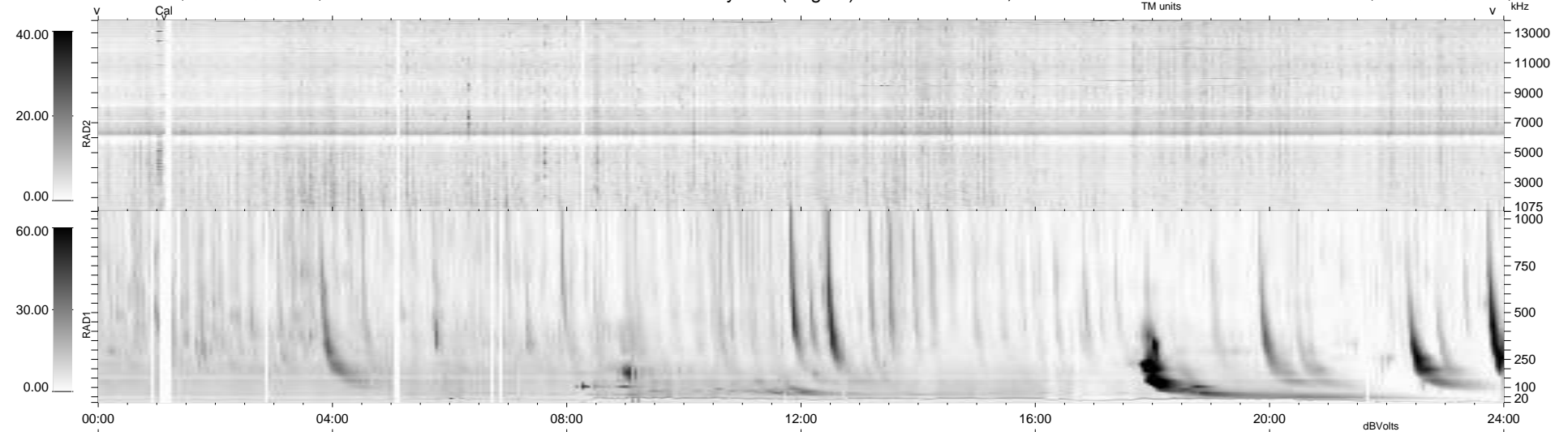
24 bad + 915 good MF/939MF projected (97%) - 0 missing MFs  
 Avg interval = 180 secs  
 Re = - 262.25 (259.84, 29.39, 19.90 GSE)

windlib 2.0b

LZ version = v01

### WIND/WAVES Summary Plot (Page 1) for 14-APR-2013, DOY = 104

DAILY 2013-05-02 12:57:16  
 Re = 262.31 (260.21, 26.22, 20.17 GSE)



```

RAD2
Antenna Ey .....
Mode LIN(1) .....
SUM/SEP SEP .....
Toggle OFF .....

RAD1
Antenna Ex .....
Mode LIS(2,4) .....
SUM/SEP SUM .....
Toggle OFF .....

TNR
Antenna ExEy .....
Mode A-32 .....
Sweep ACE .....
  
```