

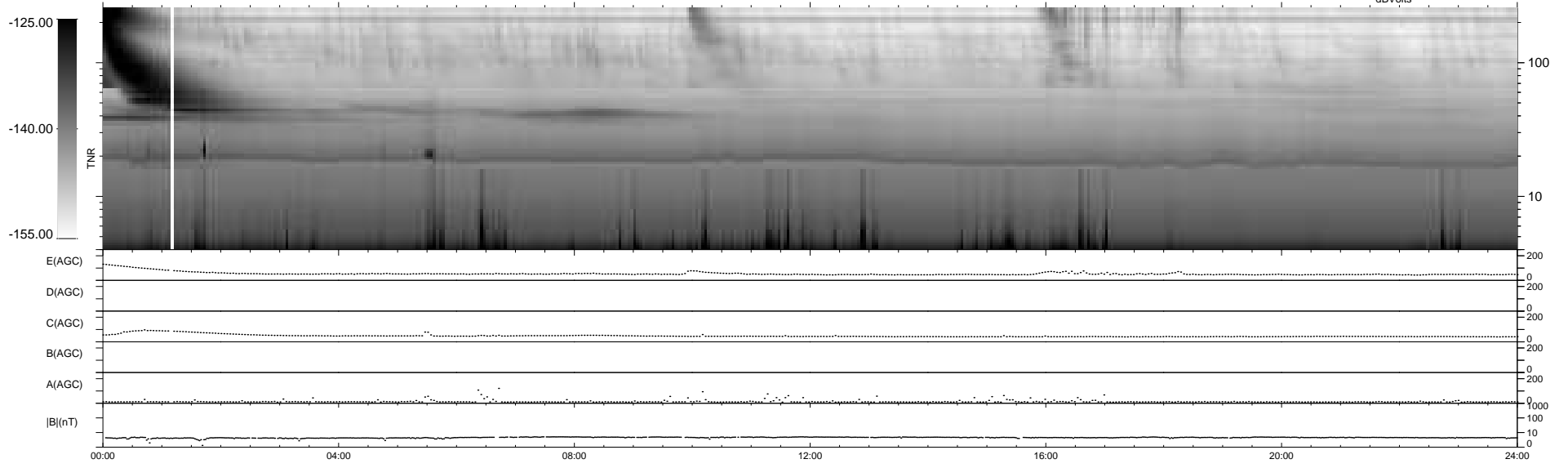
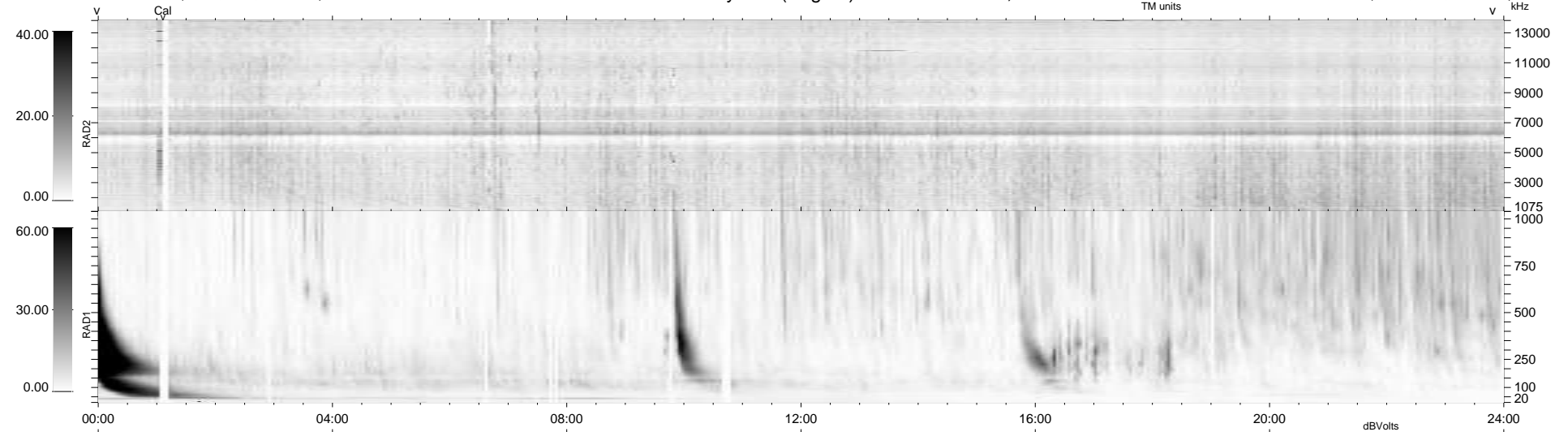
23 bad + 916 good MF/939MF projected (97%) - 0 missing MFs
 Avg interval = 180 secs
 Re = 262.02 (258.87, 35.61, 19.30 GSE)

windlib 2.0b

LZ version = v01

WIND/WAVES Summary Plot (Page 1) for 12-APR-2013, DOY = 102

DAILY 2013-05-02 12:55:19
 Re = 262.15 (259.39, 32.55, 19.61 GSE)



RAD2 Antenna Ey
 Mode LIN(1)
 SUM/SEP SEP
 Toggle OFF
 RAD1 Antenna Ex
 Mode LIS(2,4)
 SUM/SEP SUM
 Toggle OFF
 TNR Antenna ExEy
 Mode A-32
 Sweep ACE