

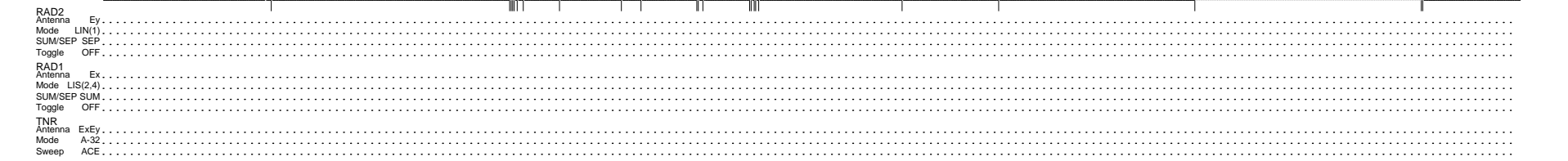
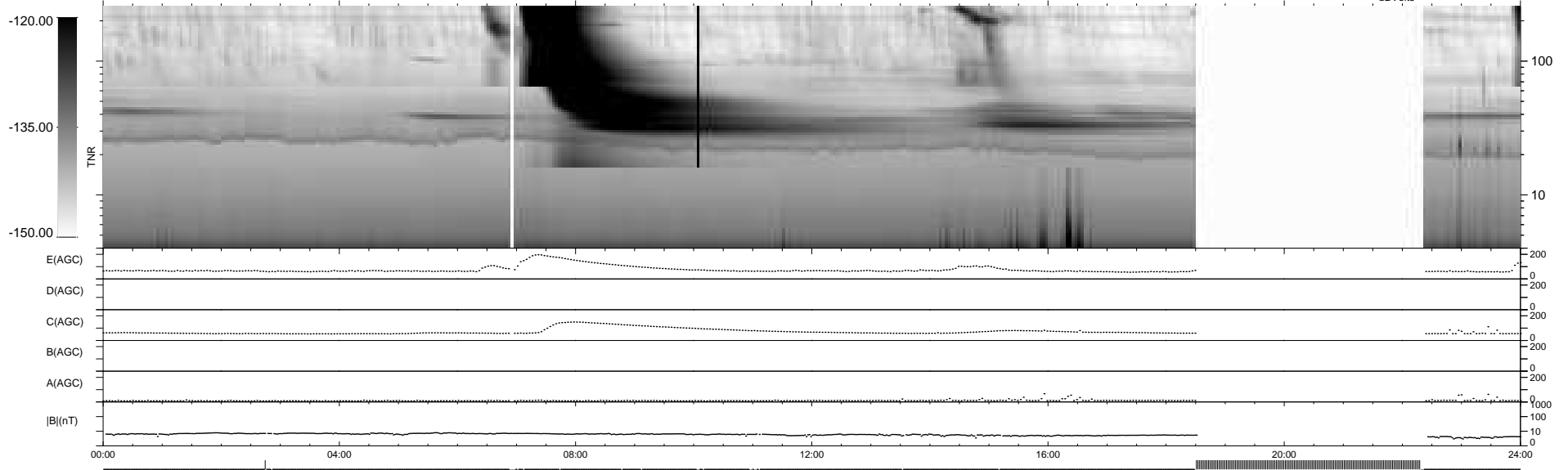
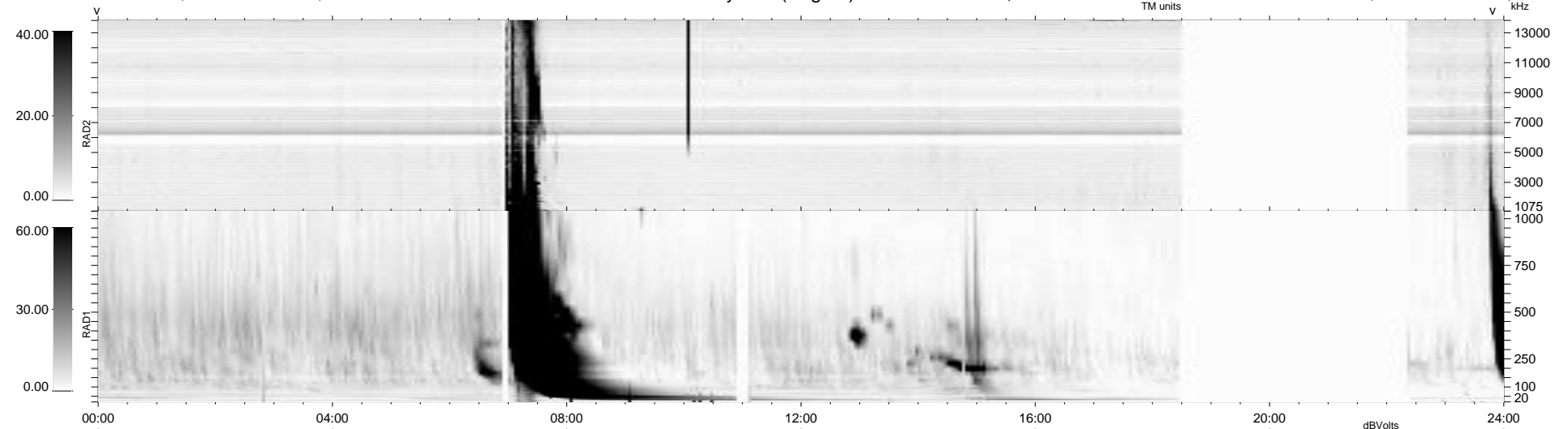
23 bad + 766 good MF/939MF projected (81%) - 150 missing MFs
 Avg interval = 180 secs
 Re = 261.83 (258.26, 38.64, 18.97 GSE)

windlib 2.0b

LZ version = v01

WIND/WAVES Summary Plot (Page 1) for 11-APR-2013, DOY = 101

DAILY 2013-04-13 02:46:08
 Re = 262.01 (258.86, 35.63, 19.30 GSE)



```

RAD2
Antenna  Ey .....
Mode     LIN(1) .....
SUM/SEP  SEP .....
Toggle   OFF .....

RAD1
Antenna  Ex .....
Mode     LIS(2,4) .....
SUM/SEP  SUM .....
Toggle   OFF .....

TNR
Antenna  ExEy .....
Mode     A-32 .....
Sweep    ACE .....
  
```