

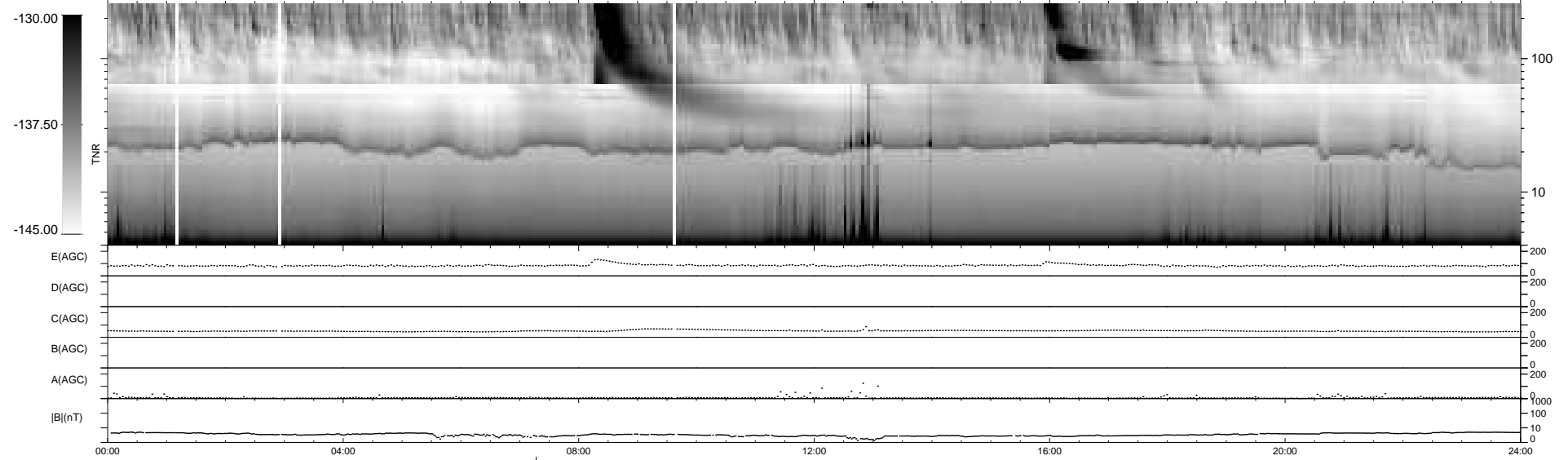
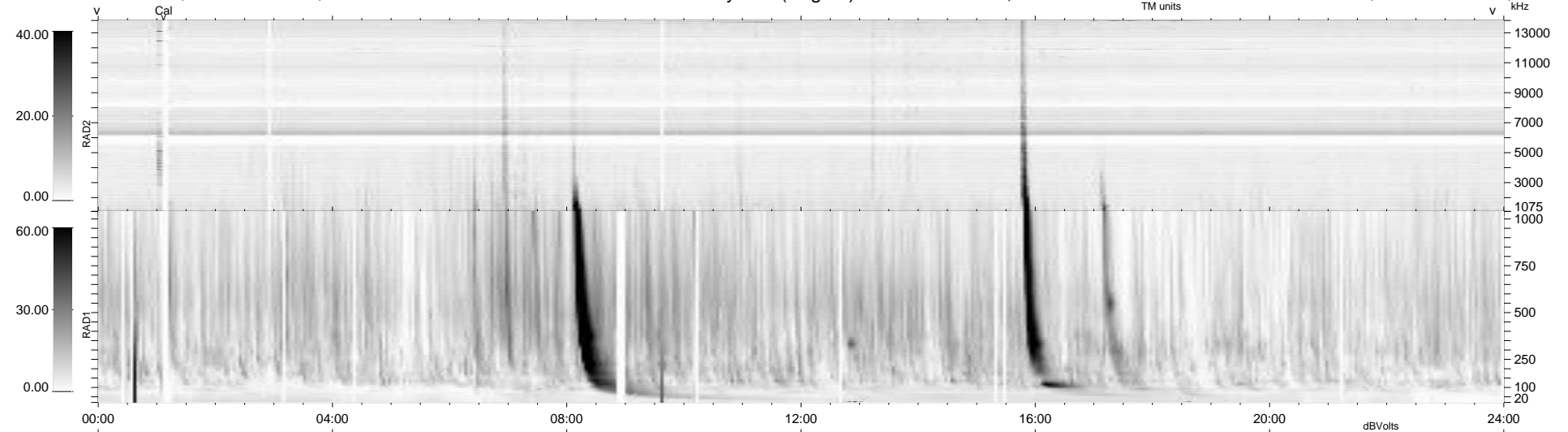
25 bad + 913 good MF/939MF projected (97%) - 1 missing MF
 Avg interval = 180 secs
 Re = 260.97 (256.00, 47.45, 17.87 GSE)

windlib 2.0b

LZ version = v01

WIND/WAVES Summary Plot (Page 1) for 08-APR-2013, DOY = 98

DAILY 2013-05-02 12:51:24
 Re = 261.30 (256.82, 44.58, 18.26 GSE)



RAD2
 Antenna Ey
 Mode LIN(1)
 SUM/SEP SEP
 Toggle OFF
 RAD1
 Antenna Ex
 Mode LIS(2,4)
 SUM/SEP SUM
 Toggle OFF
 TNR
 Antenna ExEy
 Mode A-32
 Sweep ACE