

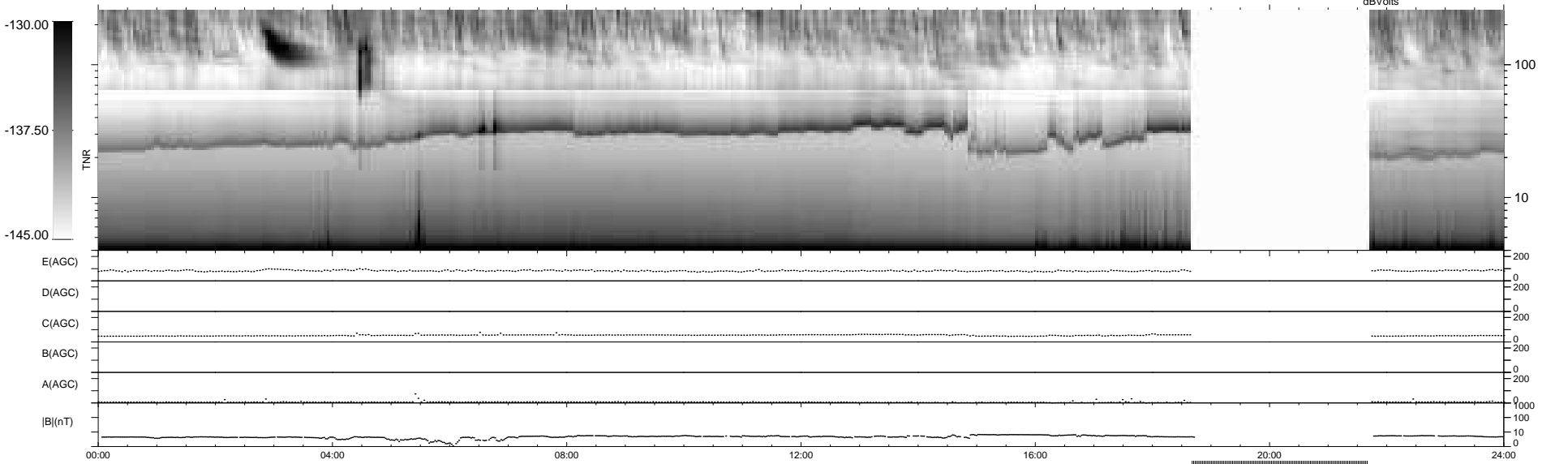
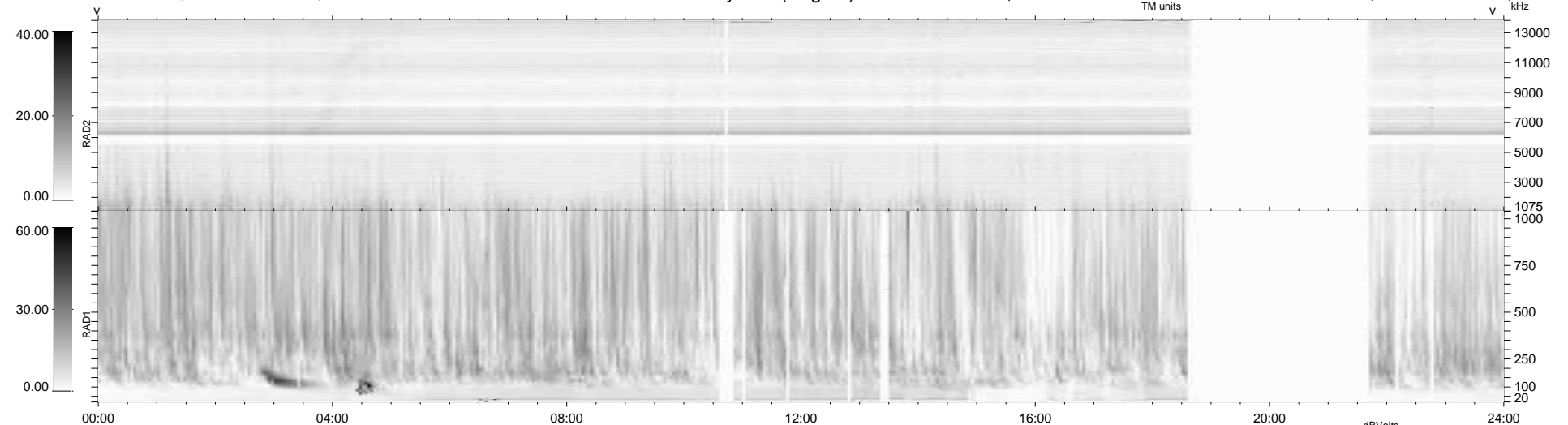
26 bad + 795 good MF/939MF projected (84%) - 118 missing MFs  
 Avg interval = 180 secs  
 Re = 260.59 (255.09, 50.30, 17.47 GSE)

windlib 2.0b

LZ version = v02

### WIND/WAVES Summary Plot (Page 1) for 07-APR-2013, DOY = 97

DAILY 2013-04-10 10:46:06  
 Re = 260.97 (255.99, 47.47, 17.87 GSE)



RAD2  
 Antenna Ey .....  
 Mode LIN(1) .....  
 SUM/SEP SEP .....  
 Toggle OFF .....  
 RAD1  
 Antenna Ex .....  
 Mode LIS(2,4) .....  
 SUM/SEP SUM .....  
 Toggle OFF .....  
 TNR  
 Antenna ExEy .....  
 Mode A-32 .....  
 Sweep ACE .....