

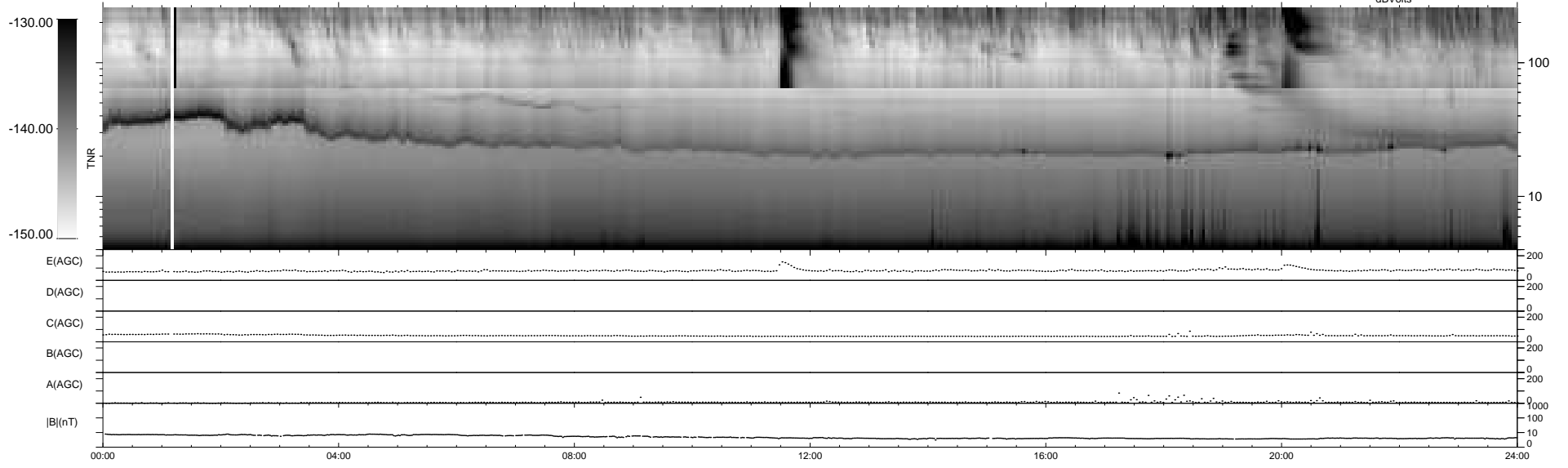
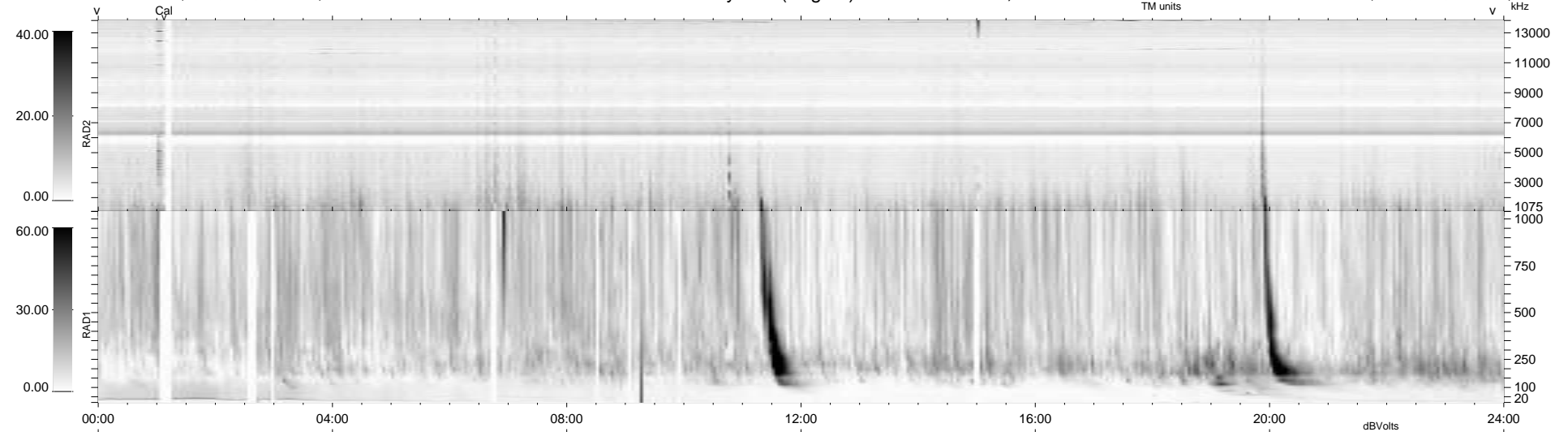
24 bad + 916 good MF/940MF projected (97%) - 0 missing MFs
 Avg interval = 180 secs
 Re = 260.17 (254.12, 53.11, 17.04 GSE)

windlib 2.0b

LZ version = v01

WIND/WAVES Summary Plot (Page 1) for 06-APR-2013, DOY = 96

DAILY 2013-05-02 12:49:29
 Re = 260.59 (255.08, 50.32, 17.46 GSE)



RAD2
 Antenna Ey
 Mode LIN(1)
 SUM/SEP SEP
 Toggle OFF

RAD1
 Antenna Ex
 Mode LIS(2,4)
 SUM/SEP SUM
 Toggle OFF

TNR
 Antenna ExEy
 Mode A-32
 Sweep ACE