

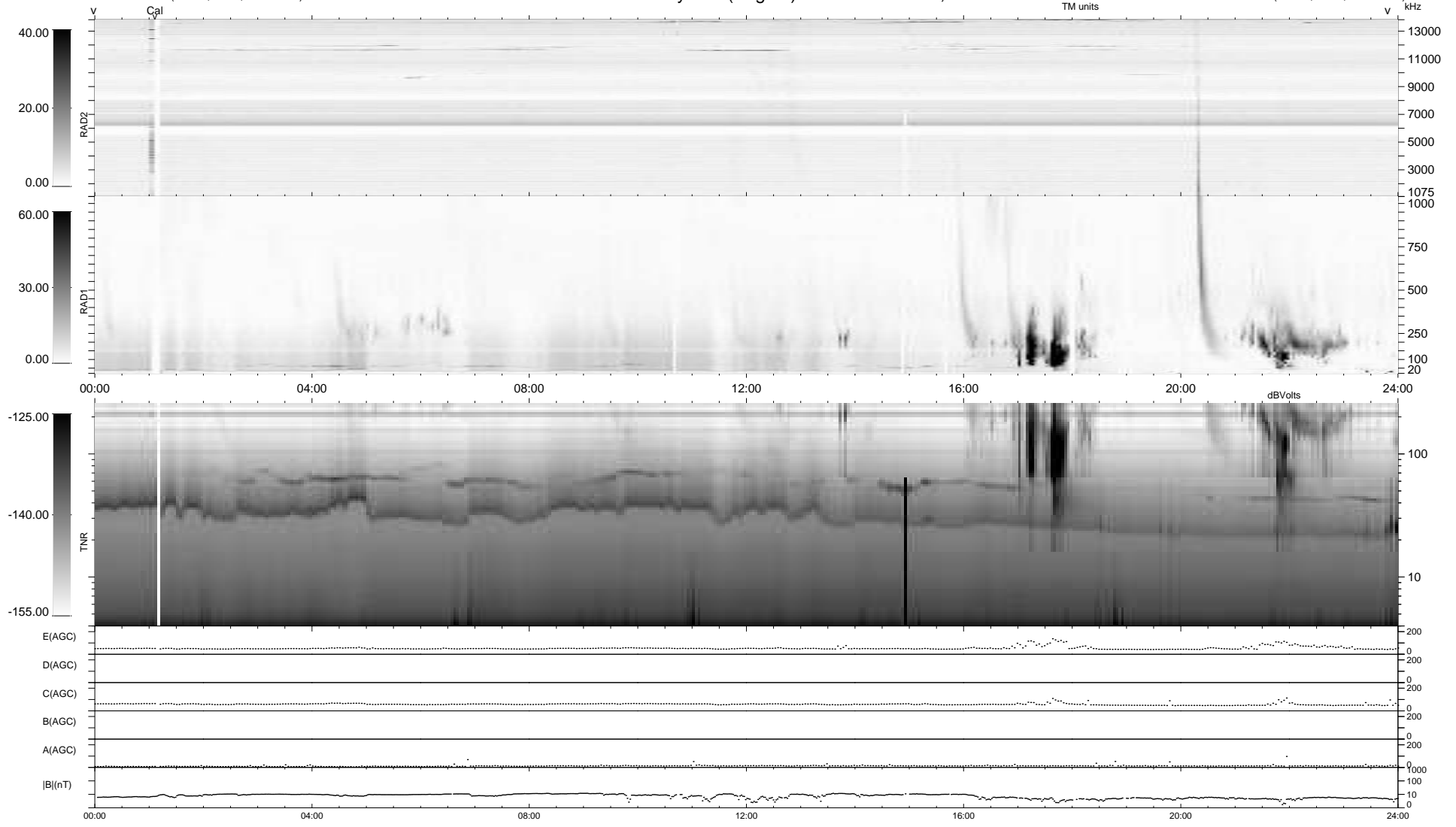
20 bad + 919 good MF/939MF projected (97%) - 0 missing MFs
 Avg interval = 180 secs
 Re = - 255.31 (242.54, 78.85, 11.80 GSE)

windlib 2.0b

LZ version = v01

WIND/WAVES Summary Plot (Page 1) for 27-MAR-2013, DOY = 86

DAILY 2013-03-29 00:46:07
 Re = 255.77 (243.72, 76.57, 12.39 GSE)



```

RAD2
Antenna  Ey
Mode     LIN(1)
SUM/SEP  SEP
Toggle   OFF

RAD1
Antenna  Ex
Mode     LIS(2/4)
SUM/SEP  SUM
Toggle   OFF

TNR
Antenna  ExEy
Mode     A-32
Sweep    ACE
  
```