

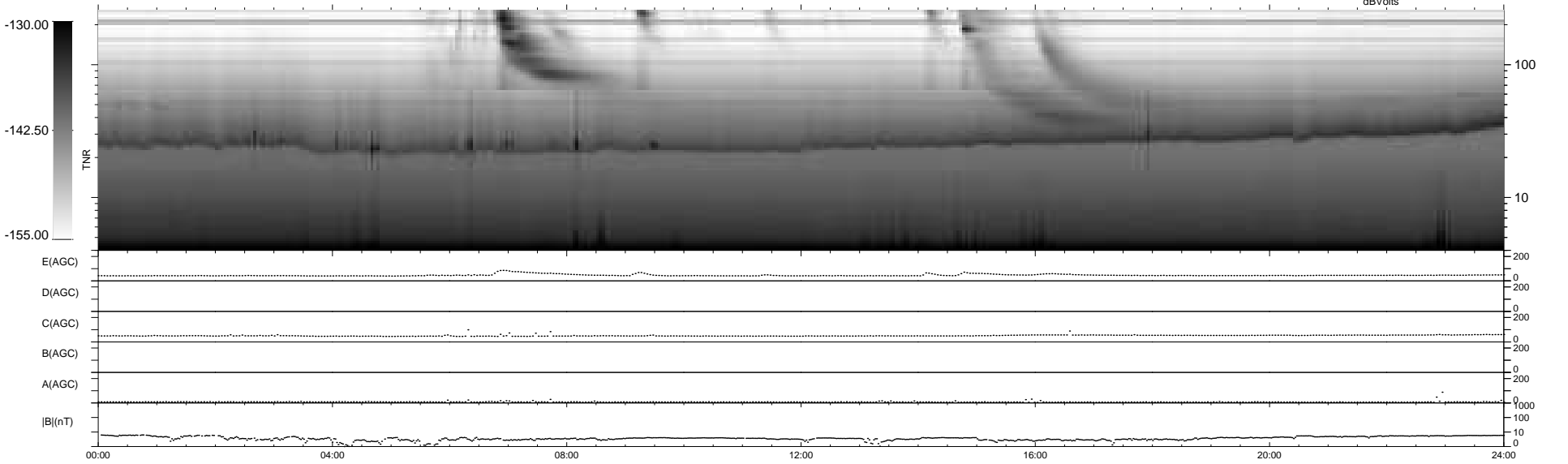
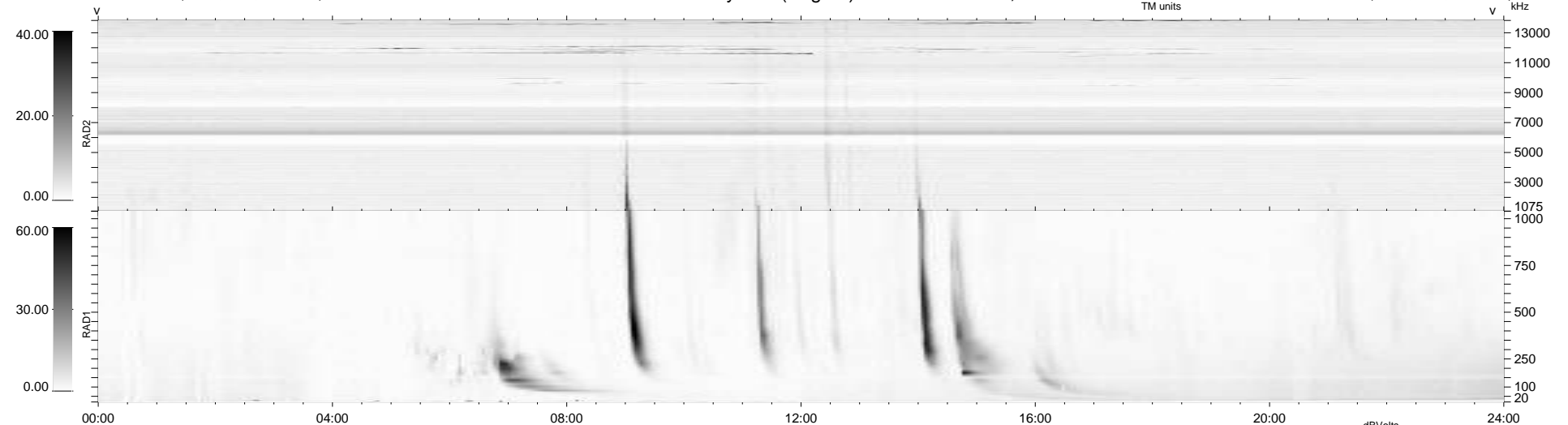
26 bad + 913 good MF/939MF projected (97%) - 0 missing MFs
 Avg interval = 180 secs
 Re = 254.86 (241.37, 81.05, 11.21 GSE)

windlib 2.0b

LZ version = v01

WIND/WAVES Summary Plot (Page 1) for 26-MAR-2013, DOY = 85

DAILY 2013-03-27 05:46:07
 Re = 255.31 (242.53, 78.87, 11.80 GSE)



```

RAD2
Antenna Ey .....
Mode LIN(1) .....
SUM/SEP SEP .....
Toggle OFF .....

RAD1
Antenna Ex .....
Mode LIS(2,4) .....
SUM/SEP SUM .....
Toggle OFF .....

TNR
Antenna ExEy .....
Mode A-32 .....
Sweep ACE .....
  
```