

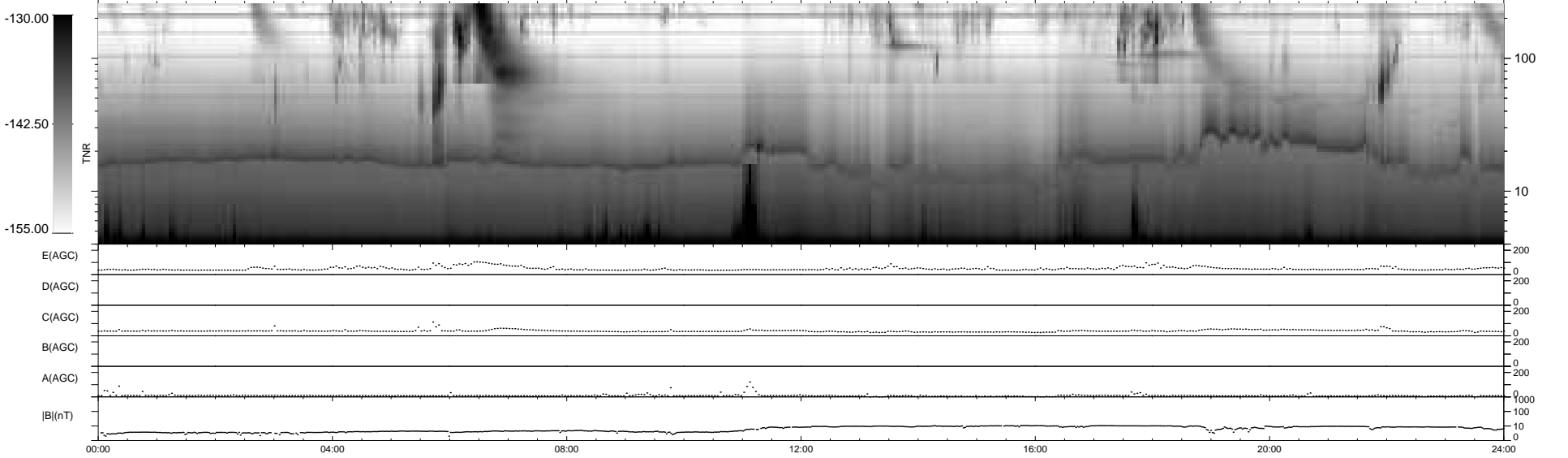
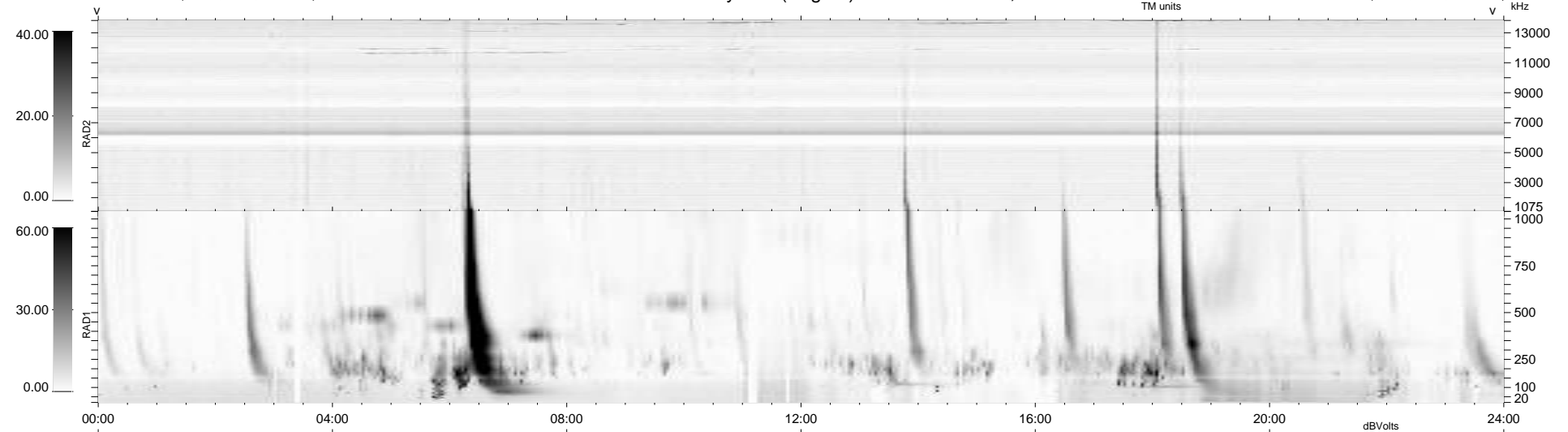
20 bad + 919 good MF/939MF projected (97%) - 0 missing MFs
 Avg interval = 180 secs
 Re = 251.92 (234.50, 91.73, 7.48 GSE)

windlib 2.0b

LZ version = v02

WIND/WAVES Summary Plot (Page 1) for 20-MAR-2013, DOY = 79

DAILY 2013-03-26 15:46:08
 Re = 252.47 (235.63, 90.28, 8.12 GSE)



```

RAD2
Antenna Ey .....
Mode LIN(1) .....
SUM/SEP SEP .....
Toggle OFF .....

RAD1
Antenna Ex .....
Mode LIS(2/4) .....
SUM/SEP SUM .....
Toggle OFF .....

TNR
Antenna ExEy .....
Mode A-32 .....
Sweep ACE .....
  
```