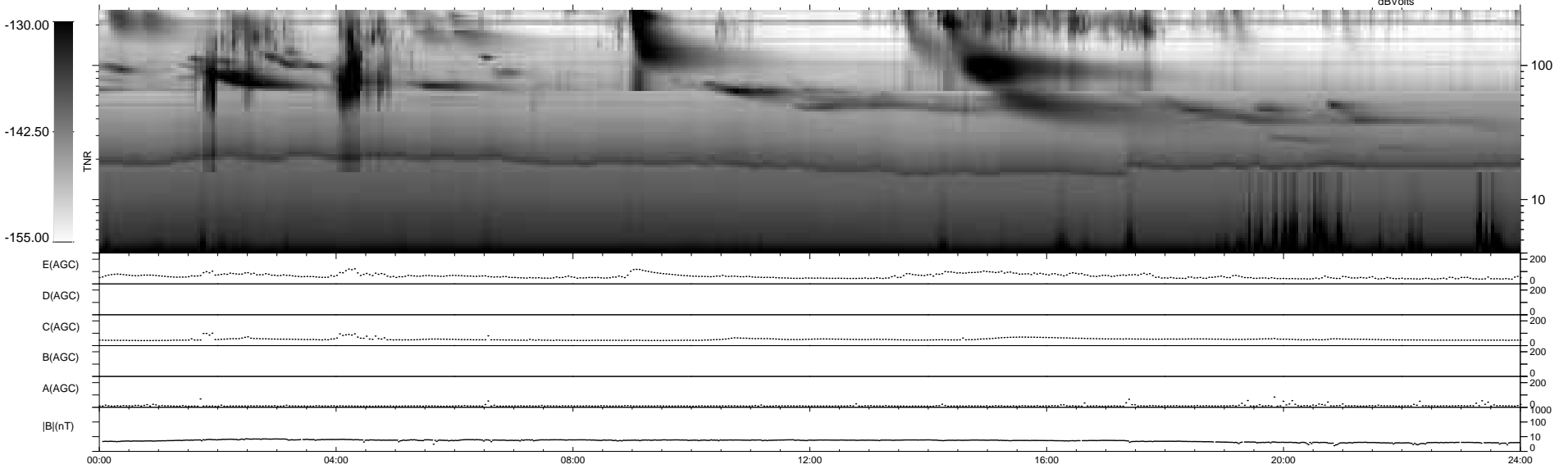
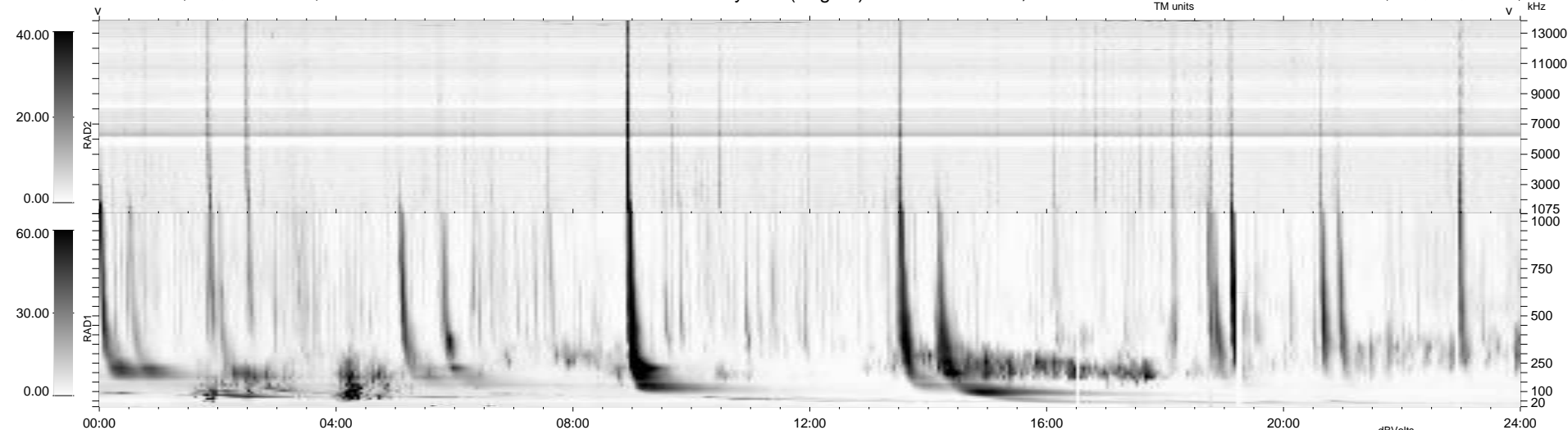


7 bad + 932 good MF/939MF projected (99%) - 0 missing MFs  
 Avg interval = 180 secs  
 Re = 249.21 (229.87, 96.14, 4.88 GSE)

windlib 2.0b LZ version = v01

### WIND/WAVES Summary Plot (Page 1) for 16-MAR-2013, DOY = 75

DAILY 2013-03-17 21:46:09  
 Re = 249.97 (231.04, 95.26, 5.54 GSE)



```

RAD2
Antenna Ey .....
Mode LIN(1) .....
SUM/SEP SEP .....
Toggle OFF .....

RAD1
Antenna Ex .....
Mode LIS(2,4) .....
SUM/SEP SUM .....
Toggle OFF .....

TNR
Antenna ExEy .....
Mode A-32 .....
Sweep ACE .....
  
```