

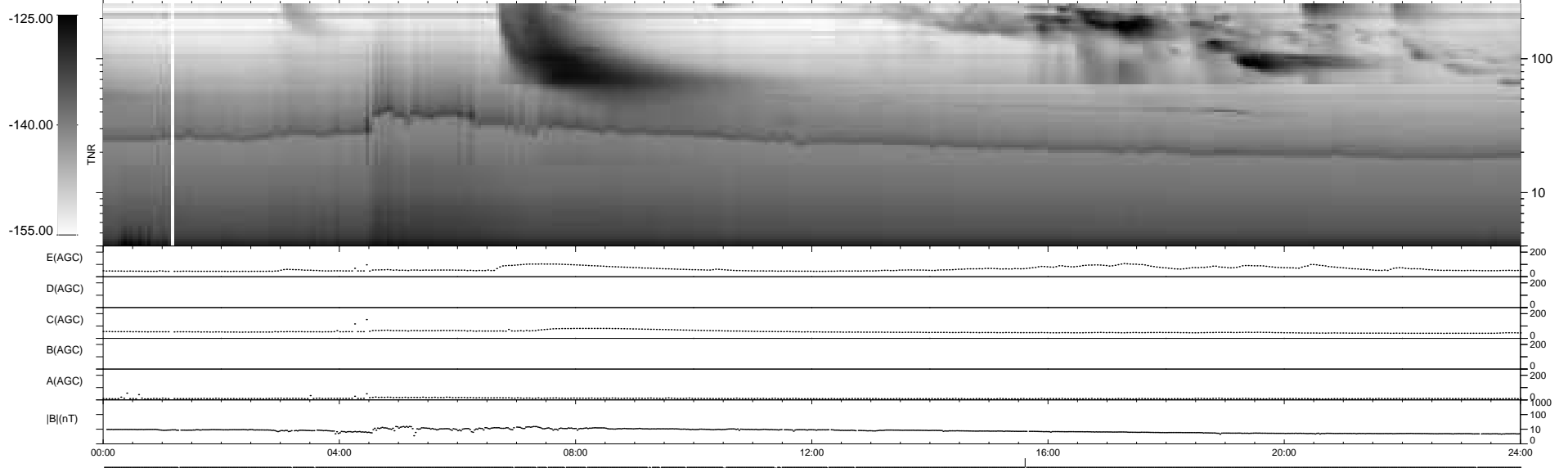
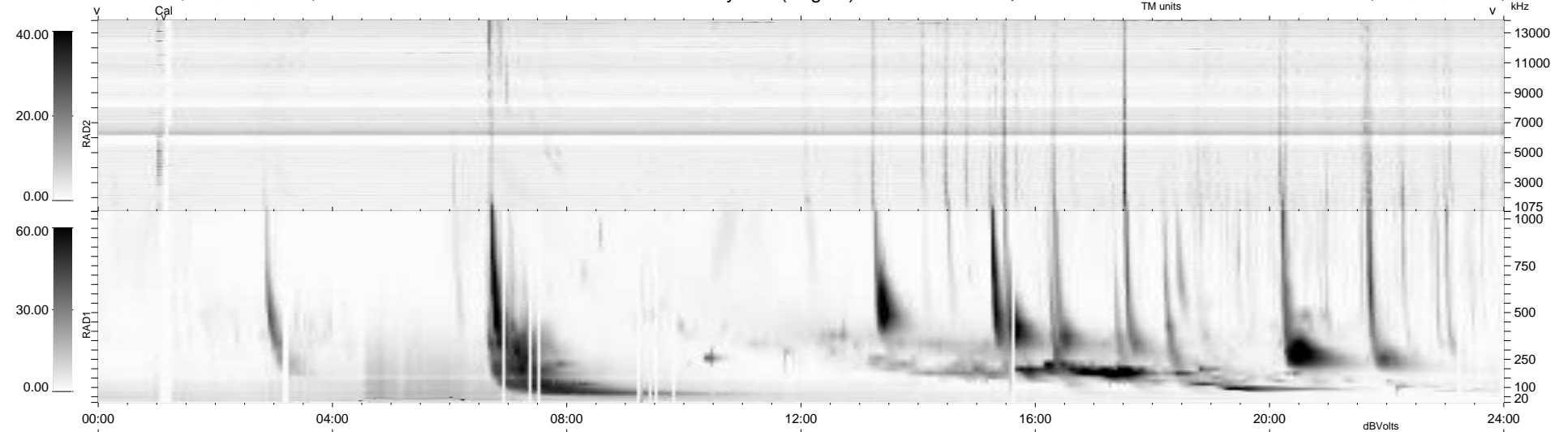
20 bad + 918 good MF/939MF projected (97%) - 1 missing MF
 Avg interval = 180 secs
 Re = 248.39 (228.68, 96.90, 4.22 GSE)

windlib 2.0b

LZ version = v02

WIND/WAVES Summary Plot (Page 1) for 15-MAR-2013, DOY = 74

DAILY 2013-03-18 15:46:07
 Re = 249.21 (229.86, 96.15, 4.88 GSE)



RAD2
 Antenna Ey
 Mode LIN(1)
 SUM/SEP SEP
 Toggle OFF
 RAD1
 Antenna Ex
 Mode LIS(2/4)
 SUM/SEP SUM
 Toggle OFF
 TNR
 Antenna ExEy
 Mode A-32
 Sweep ACE