

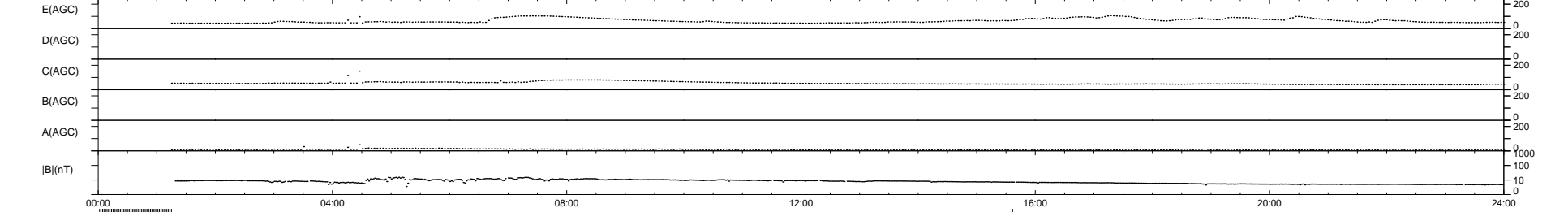
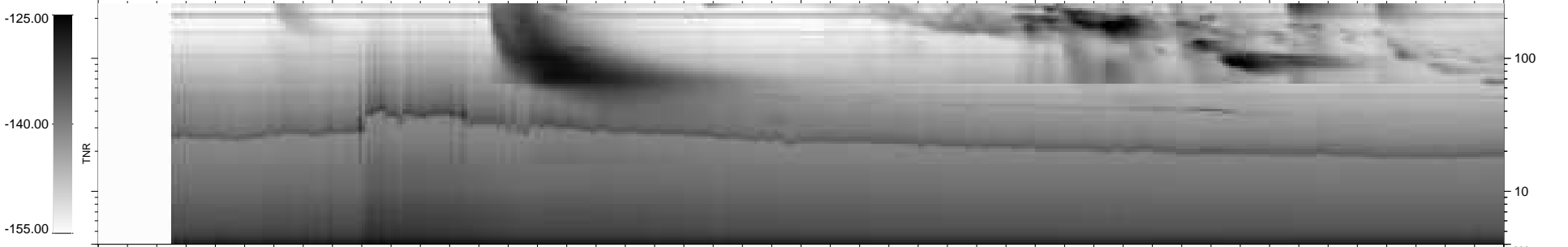
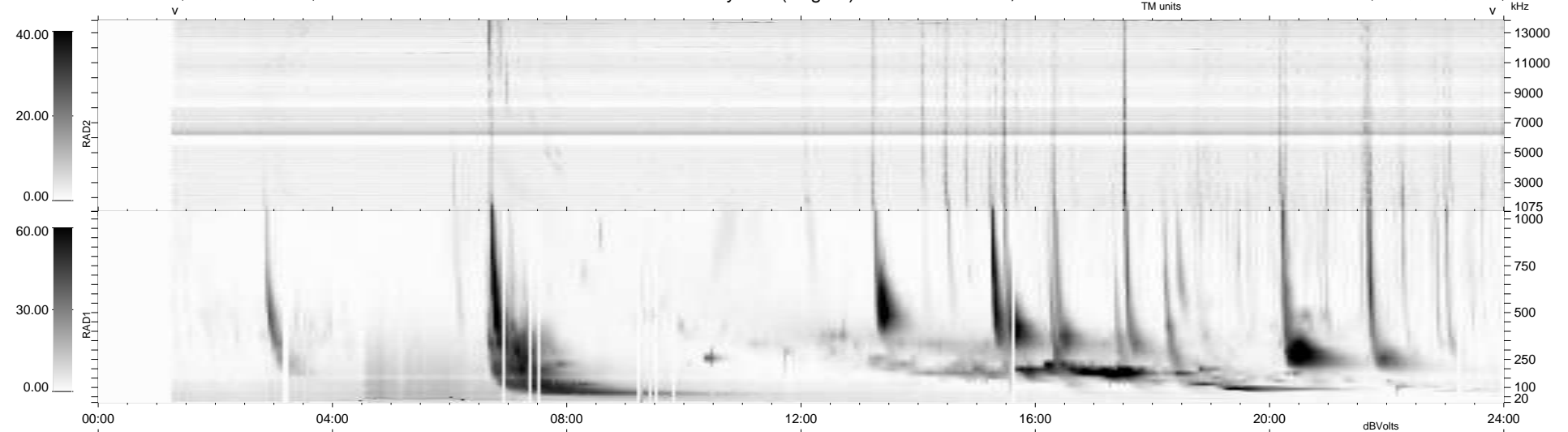
20 bad + 869 good MF/939MF projected (92%) - 50 missing MFs
Avg interval = 180 secs
Re = -248.44 (228.74, 96.86, 4.26 GSE)

windlib 2.0b

LZ version = v01

WIND/WAVES Summary Plot (Page 1) for 15-MAR-2013, DOY = 74

DAILY 2013-03-16 09:46:08
Re = 249.21 (229.86, 96.15, 4.88 GSE)



RAD2 Antenna Mode SUM/SEP Toggle
RAD1 Antenna Mode SUM/SEP Toggle
TNR Antenna Mode Sweep