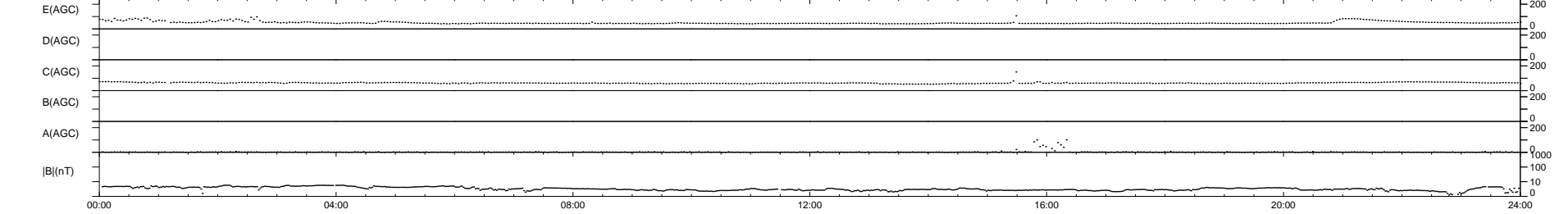
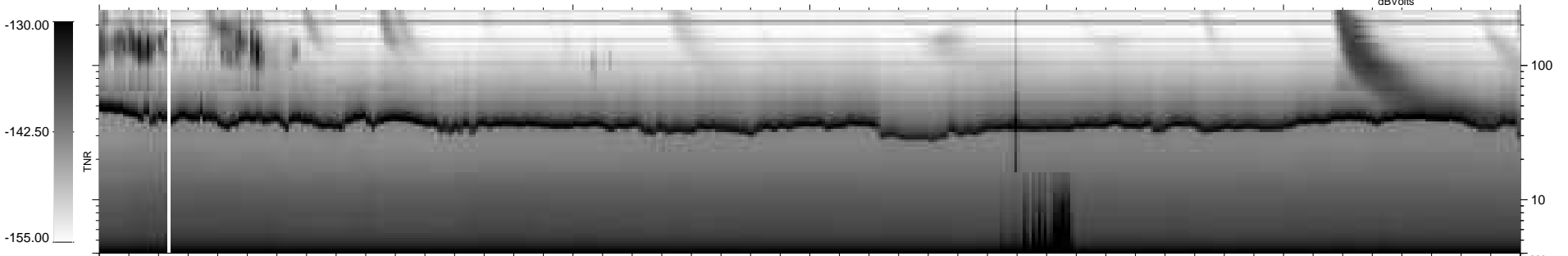
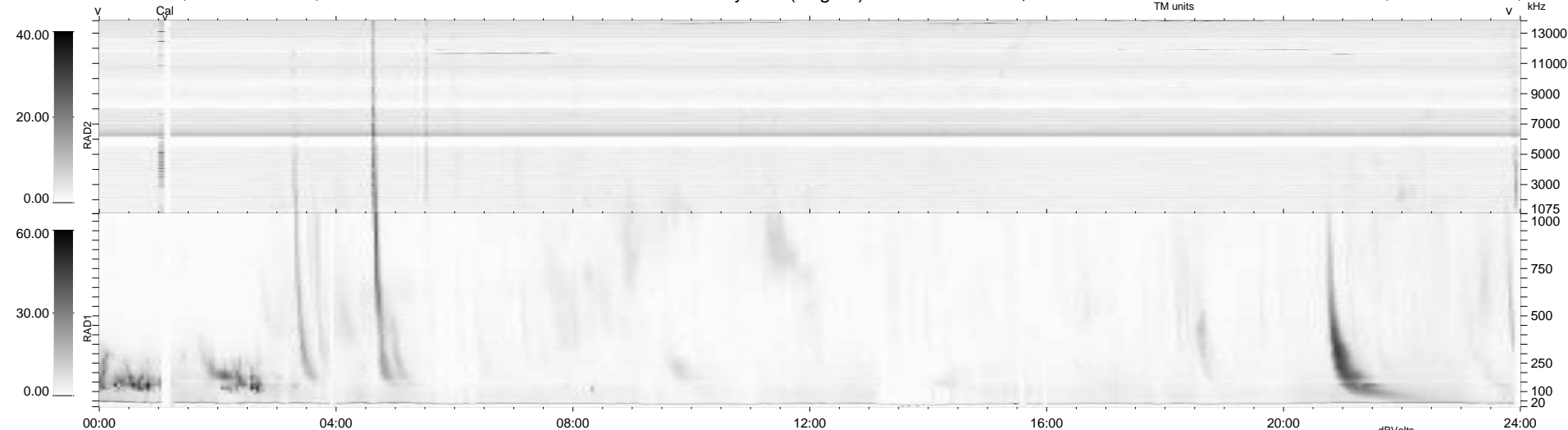


9 bad + 930 good MF/939MF projected (99%) - 0 missing MFs  
 Avg interval = 180 secs  
 Re = 244.46 (223.69, 98.59, 1.51 GSE)

windlib 2.0b LZ version = v02

### WIND/WAVES Summary Plot (Page 1) for 11-MAR-2013, DOY = 70

DAILY 2013-03-13 14:46:07  
 Re = 245.53 (224.96, 98.36, 2.19 GSE)



RAD2  
 Antenna Ey .....  
 Mode LIN(1) .....  
 SUM/SEP SEP .....  
 Toggle OFF .....  
 RAD1  
 Antenna Ex .....  
 Mode LIS(2,4) .....  
 SUM/SEP SUM .....  
 Toggle OFF .....  
 TNR  
 Antenna ExEy .....  
 Mode A-32 .....  
 Sweep ACE .....