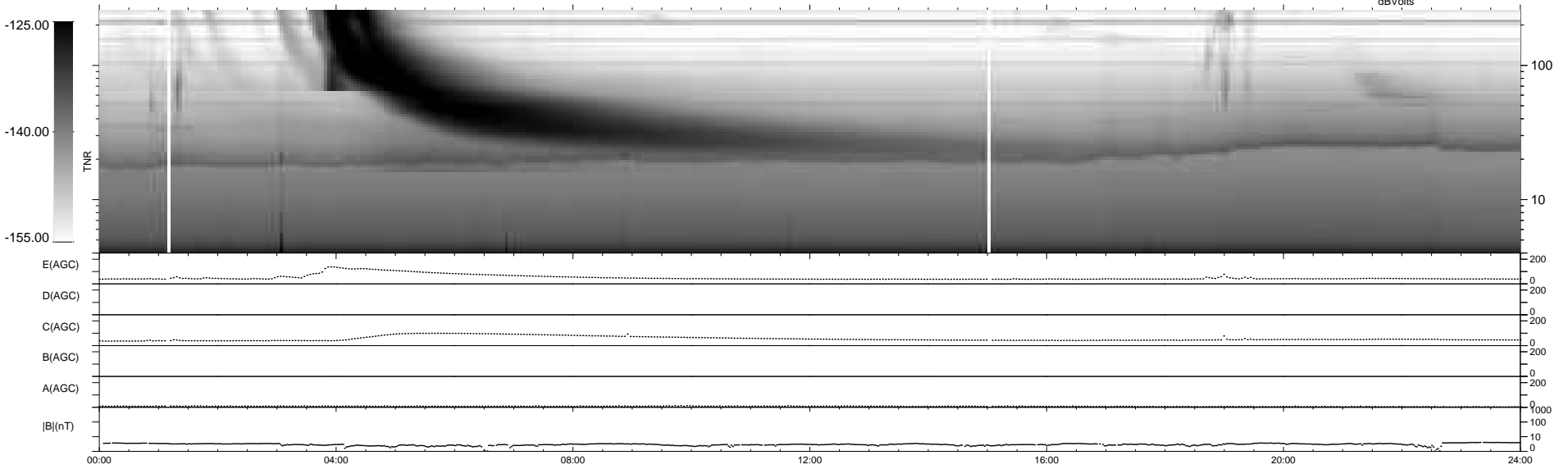
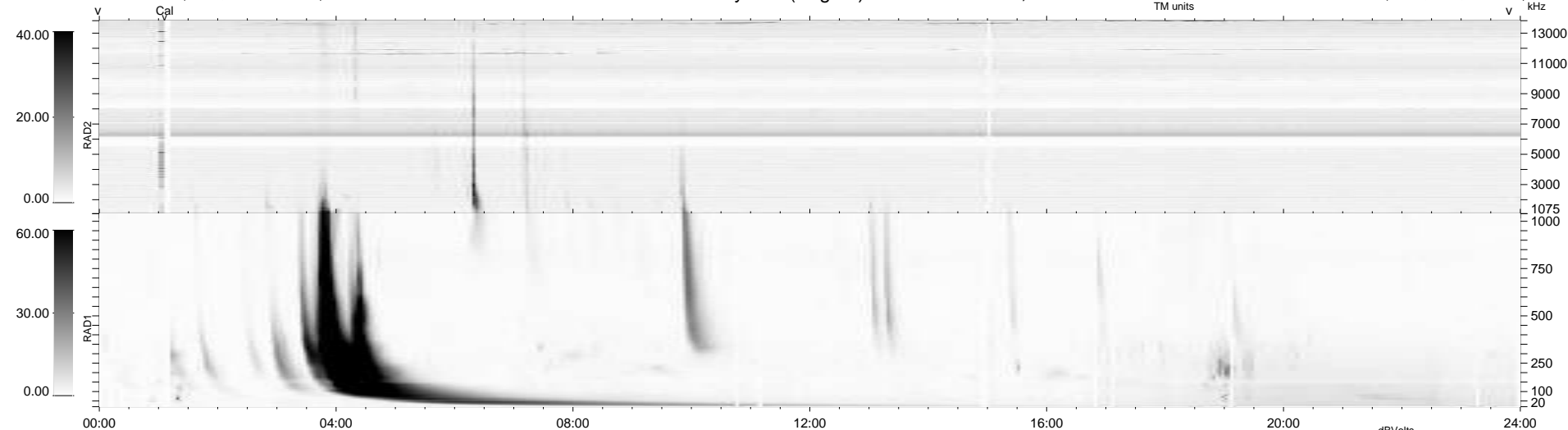


17 bad + 922 good MF/939MF projected (98%) - 0 missing MFs
 Avg interval = 180 secs
 Re = 236.91 (215.77, 97.78, -2.68 GSE)

windlib 2.0b LZ version = v01
 DAILY 2013-03-06 20:46:08
 Re = 238.24 (217.08, 98.15, -1.98 GSE)

WIND/WAVES Summary Plot (Page 1) for 05-MAR-2013, DOY = 64



RAD2
 Antenna Ey
 Mode LIN(1)
 SUM/SEP SEP
 Toggle OFF
 RAD1
 Antenna
 Mode
 SUM/SEP
 Toggle
 TNR
 Antenna ExEy
 Mode A-32
 Sweep ACE