

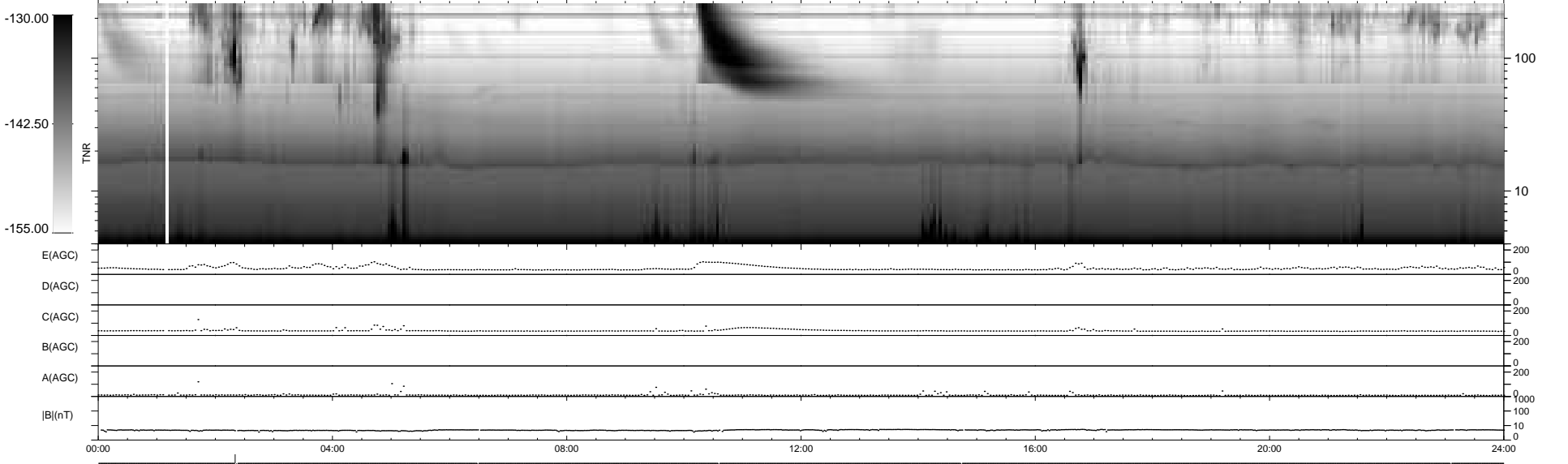
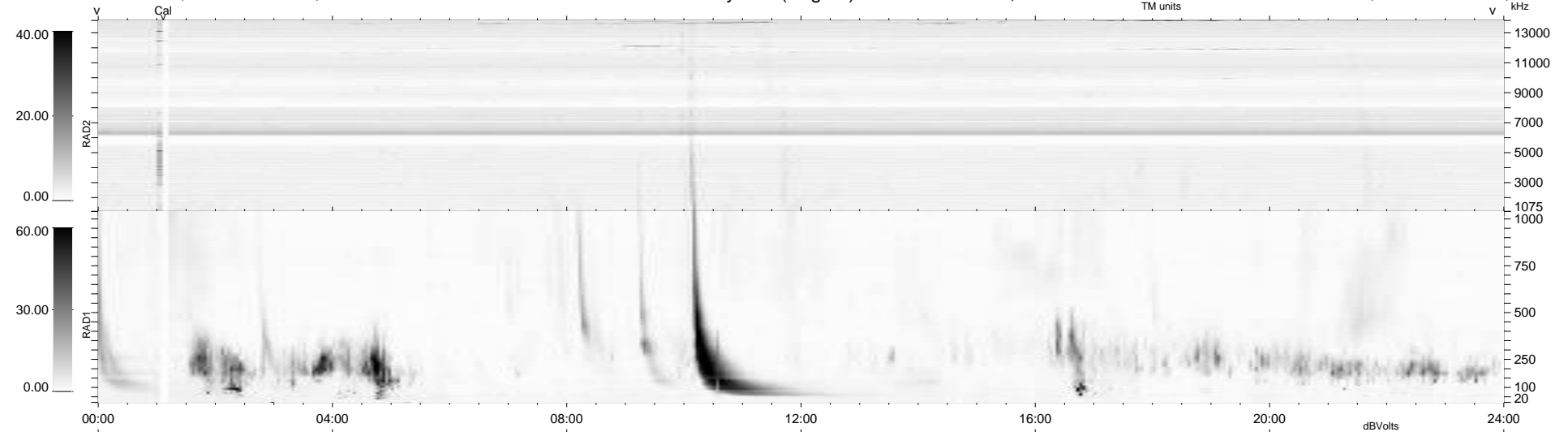
5 bad + 933 good MF/939MF projected (99%) - 1 missing MF
 Avg interval = 180 secs
 Re = -234.20 (213.23, 96.77, -4.07 GSE)

windlib 2.0b

LZ version = v01

WIND/WAVES Summary Plot (Page 1) for 03-MAR-2013, DOY = 62

DAILY 2013-03-04 09:46:07
 Re = 235.55 (214.48, 97.32, -3.38 GSE)



RAD2
 Antenna Ey
 Mode LIN(1)
 SUM/SEP SEP
 Toggle OFF
 RAD1
 Antenna Ex
 Mode LIS(2,4)
 SUM/SEP SUM
 Toggle OFF
 TNR
 Antenna ExEy
 Mode A-32
 Sweep ACE